

From: (b) (6), (b) (7)(C)
To: (b) (6), (b) (7)(C)
Subject: RE: Life cycle cost for O-1 through O-3
Date: Thursday, April 11, 2013 10:37:11 AM
Attachments: [Fence O1-O3 LCCEv2.xlsm](#)
[01-03FenceLCCE04112013_v1.docx](#)

(b) (6), (b) (7)(C)

Please review the attached O-1 through O-3 LCCE analysis.

Please do not hesitate to contact me if you have any questions or comments.

Best Regards,

(b) (6), (b) (7)(C)

(b) (6), (b) (7)(C), PMP
Manager
Capgemini Government Solutions
Border Patrol Facilities and Tactical Infrastructure
Program Management Office
Facilities Management and Engineering
(b) (6), (b) (7)(C)

*Excel as a trusted strategic partner enhancing
Border Patrol's proud legacy.*

From: (b) (6), (b) (7)(C)
Sent: Friday, April 05, 2013 3:16 PM
To: (b) (6), (b) (7)(C)
Cc: (b) (6), (b) (7)(C)
Subject: RE: Life cycle cost for O-1 through O-3

(b) (6), (b) (7)(C) – lets work this when you are back Monday. Hope you had a great vacation!

(b) (6), (b) (7)(C)

(b) (6), (b) (7)(C)

From: (b) (6), (b) (7)(C)
Sent: Friday, March 29, 2013 7:50 AM
To: (b) (6), (b) (7)(C)
Cc: (b) (6), (b) (7)(C)
Subject: FW: Life cycle cost for O-1 through O-3

(b) (6), (b) (7)(C) – Please see (b) (6), (b) (7)(C) request below. Can you work something up to answer his question?

(b) (6), (b) (7)(C)

Director, Business Operations Division

Border Patrol Facilities and Tactical Infrastructure Program Management Office

Facilities Management & Engineering

(b) (6), (b) (7)(C)

[REDACTED]

[REDACTED]

Excel as a trusted strategic partner enhancing Border Patrol's proud legacy.

From: (b) (6), (b) (7)(C)

Sent: Thursday, March 28, 2013 2:24 PM

To: (b) (6), (b) (7)(C)

Subject: Life cycle cost for O-1 through O-3

(b) (6), (b) (7)(C)

RGV is cutting a lot of paper on this lately and they just called asking about life cycle cost for O-1 through O-3. Can you provide info on this? Thanks.

(b) (6), (b) (7)(C)

(b) (6), (b) (7)(C)

Director-Border Patrol TI

SPPA-ORMB

Headquarters Border Patrol

(b) (6), (b) (7)(C)

[REDACTED]



O-1 Through O-3 Fence Construction Project Lifecycle Cost Estimate (LCCE)

May 17, 2018

Table of Contents

1. Purpose	3
2. Assumptions	3
3. Cost Impact	4
4. Appendix	5
I. Routine M&R Cost Data	5
II. Comprehensive Immigration Reform (CIR) Project Requirements Document (PRD) Baseline Cost Estimate	5

1. Purpose

This analysis will calculate the lifecycle cost estimate for fence construction project O-1 through O-3.

2. Assumptions

The following are a set of assumptions for the O-1 through O-3 Fence Construction.

1. Construction Costs (b) (5)
[Redacted]
[Redacted]
2. Operations and Maintenance Costs (b) (5)
[Redacted]
 - a. Fence Maintenance - (b) (5)
[Redacted]
[Redacted]
 - b. Road Maintenance - (b) (5)
[Redacted]
[Redacted]
 - c. Natural Disasters - (b) (5)
[Redacted]
[Redacted]
[Redacted]
[Redacted]

3. Cost Impact

O-1 Through O-3 Fence LCCE		Inflation	Life Expectancy (yrs.)	Fence Maint. Cost Per Mile	Miles of Fence	Road Maint. Cost Per Mile	Miles of Road	Disaster Repair Per Year		
*Millions of Dollars					(b) (5)					
		FY14	FY15	FY16	FY17	FY18	FY19	FY20	FY21-FY44	Total
1.0 Planning Construction	\$	(b) (5)								
1.1 Labor	\$									
1.1.1 Program Management	\$									
1.1.2 Real Estate	\$									
1.1.3 Environmental	\$									
1.1.4 Design	\$									
1.1.5 Construction Contract	\$									
1.1.6 Construction Oversight	\$									
1.2 Contract	\$									
1.2.1 Program Management	\$									
1.2.2 Real Estate	\$									
1.2.3 Environmental	\$									
1.2.4 Design	\$									
1.2.5 Construction Contract	\$									
1.2.6 Construction Oversight	\$									
2.0 Operations & Maintenance	\$									
2.1 Operations	\$									
2.1.1 Inspections	\$									
2.1.2 Environmental	\$									
2.1.3 Real Estate	\$									
2.2 Maintenance and Repair	\$									
2.2.1 Fence Maintenance	\$									
2.2.2 Road Maintenance	\$									
2.2.3 Natural Disasters	\$									
2.3 Miscellaneous	\$									
2.3.3 Etc.	\$									
2.4 Land Costs	\$									
2.4.1 Leases	\$									
Total	\$									

The O-1 through O-3 fence construction project LCCE is

(b) (5)

4. Appendix

I. Routine M&R Cost Data

Routine TI M&R captures activities that support the sustainment of four main types of TI: fencing, lighting, roads, and vegetation and debris removal. OBP's future TI requirements are known and predictable, hence can be projected utilizing historical cost data.

This analysis uses cost data from the 4-15-2012 USACE Burn Rate Report for Round 3 Interim Contracts to calculate the routine maintenance costs of fencing, lighting, roads, and vegetation and debris removal. Utilizing USACE Contract cost data, the analysis calculates the average cost to maintain each major type of TI. Based on the historical data for April 2010 – March 2011 the following M&R yearly costs per unit were calculated:

TI Type	Unit	Annualized M&R Cost	Average M&R Cost Per Unit
Fence	(b) (7)(E)	(b) (5)	
Lighting			
Roads			
Veg/Debris			

II. Comprehensive Immigration Reform (CIR) Project Requirements Document (PRD) Baseline Cost Estimate



O1-O3 PRD BCE.xlsx

O-1 Through O-3 Fence LCCE		Inflation	Life Expectancy (yrs.)	Fence Maint. Cost Per Mile	Miles of Fence	Road Maint. Cost Per Mile	Miles of Road	Disaster Repair Per Year		
*Millions of Dollars					(b) (5), (b) (7)(E)					
		FY14	FY15	FY16	FY17	FY18	FY19	FY20	FY21-FY44	Total
1.0 Planning Construction	\$	(b) (5), (b) (7)(E)								
1.1 Labor	\$									
1.1.1 Program Managemen	\$									
1.1.2 Real Estate	\$									
1.1.3 Environmenta	\$									
1.1.4 Design	\$									
1.1.5 Construction Contrac	\$									
1.1.6 Construction Oversight	\$									
1.2 Contract	\$									
1.2.1 Program Managemen	\$									
1.2.2 Real Estate	\$									
1.2.3 Environmenta	\$									
1.2.4 Design	\$									
1.2.5 Construction Contrac	\$									
1.2.6 Construction Oversight	\$									
2.0 Operations & Maintenance	\$									
2.1 Operations	\$									
2.1.1 Inspections	\$									
2.1.2 Environmenta	\$									
2.1.3 Real Estate	\$									
2.2 Maintenance and Repai	\$									
2.2.1 Fence Maintenance	\$									
2.2.2 Road Maintenance	\$									
2.2.3 Natural Disasters	\$									
2.3 Miscellaneous	\$									
2.3.3 Etc.	\$									
2.4 Land Costs	\$									
2.4.1 Leases	\$									
Total	\$									

Cost Element	Definition
1.0 Planning Construction	
1.1 Labor	
1.1.1 Program Management	Provided by Project Requirements Document Baseline Cost Estimate
1.1.2 Real Estate	Provided by Project Requirements Document Baseline Cost Estimate
1.1.3 Environmental	Provided by Project Requirements Document Baseline Cost Estimate
1.1.4 Design	Provided by Project Requirements Document Baseline Cost Estimate
1.1.5 Construction Contract	Provided by Project Requirements Document Baseline Cost Estimate
1.1.6 Construction Oversight	Provided by Project Requirements Document Baseline Cost Estimate
1.2 Contract	
1.2.1 Program Management	Provided by Project Requirements Document Baseline Cost Estimate
1.2.2 Real Estate	Provided by Project Requirements Document Baseline Cost Estimate
1.2.3 Environmental	Provided by Project Requirements Document Baseline Cost Estimate
1.2.4 Design	Provided by Project Requirements Document Baseline Cost Estimate
1.2.5 Construction Contract	Provided by Project Requirements Document Baseline Cost Estimate
1.2.6 Construction Oversight	Provided by Project Requirements Document Baseline Cost Estimate
2.0 Operations & Maintenance	
2.1 Operations	
2.1.1 Inspections	
2.1.2 Environmental	
2.1.3 Real Estate	
2.2 Maintenance and Repair	
2.2.1 Fence Maintenance	Inflation adjusted assumption of (b) (5) per mile of routine fence maintenance expenses; Estimate provided by (b)(6);(b)(7)(C) based on FY10 M&R data
2.2.2 Road Maintenance	Inflation adjusted assumption of (b) (5) per mile of routine road maintenance expenses; Estimate provided by (b)(6);(b)(7)(C) FY10 M&R data
2.2.3 Natural Disasters	(b) (5)
2.3 Miscellaneous	
2.3.3 Etc.	
2.4 Land Costs	
2.4.1 Leases	

Project Requirements Document Baseline Cost Estimate							
Project Title: O-1,2,& 3 (Comprehensive Immigration Reform)							
Sector: Rio Grande Valley			FM&E#:	Insert FM&E#			
Duration: (b) (5)		Insert Date		USACE District:	SWF & SWG		
P2#	XXXXXX	Activities	Resource	Org Code	Org Code Description	Amount \$	
XXXXXX	.10000	Project Management				(b) (5)	
		1 Project Management	LABOR				
			TRAVEL				
		2 PM Contract Support	AESVCS				
		Contract Type	IDC AE				
		Contract Acquisition Codes					
		Contracting Type	A - Fixed Price Re-determination				
		Contracting Method	MISC - Competitive Credit Card, Small Purchases				
		Set-Aside Decision	SV - Service Disabled Veteran Owned SB				
		3 Operations Cell	LABOR				
		4 PM Reserve	CONTINGY				
		5 USACE Contracting Support					
		a. PM Services	LABOR				
		b. Real Estate					
		Title Contract	LABOR				
		Survey Contract	LABOR				
		Appraisal Contract	LABOR				
		c. Environmental					
		Environmental Services Contract	LABOR				
		Environmental Remediation	LABOR				
		Phase I ESA	LABOR				
		Biomonitoring	LABOR				
		d. Engineering/Design					
		Scope/Requirements Contract	LABOR				
		RFP Prep Contract	LABOR				
		Design (D/B/B)	LABOR				
		e. Construction					
		Construction Contract	LABOR				
		Oversight Contract	LABOR				
		f. Peer Review	LABOR				
*add the information above for each additional contracting action required							
XXXXXX	.90000	Real Estate					(b) (5)
		1 USACE District RE Support	LABOR				
			TRAVEL				
		2 Land Payment	LAND				
		3 Relocation Costs					
		4 Condemnation Costs	DOJ Costs, Damages, etc				
		5 Title Contract	ADV&ASTSVC				
		Contract Type	BPA New				
		Contract Acquisition Codes					
		Contracting Type					
		Contracting Method					
		Set-Aside Decision					
		6 Survey Contract	OTHCONSV				
		Contract Type	BPA New				
		Contract Acquisition Codes					
		Contracting Type					
		Contracting Method					
		Set-Aside Decision					
		7 Appraisal Contract	OTHCONSV				
		Contract Type	BPA New				
		Contract Acquisition Codes					
		Contracting Type					
		Contracting Method					
		Set-Aside Decision					
		8 RE Reserve	CONTINGY				
XXXXXX	.95000	Environmental				(b) (5)	
		1 USACE District ENV Support	LABOR				
			TRAVEL				
		2 Environmental Services Contract	OTHCONSV				
		Contract Type	MATOC Task Order				
		Contract Acquisition Codes					
		Contracting Type					
		Contracting Method					
		Set-Aside Decision					
		3 Environmental Remediation	OTHCONSV				
		Contract Type	MATOC Task Order				
		Contract Acquisition Codes					
		Contracting Type					
		Contracting Method					
		Set-Aside Decision					
		4 Mitigation					
		5 Phase I ESA	OTHCONSV				
		Contract Type	MATOC Task Order				
		Contract Acquisition Codes					

		Contracting Type Contracting Method Set-Aside Decision	
6	Biomonitors	OTHCONSVCS	
	Contract Type	MATOC Task Order	
	Contract Acquisition Codes		
		Contracting Type Contracting Method Set-Aside Decision	
7	ENV Reserve	CONTINGY	
XXXXXX	.40000	Design	
	1	Scope/Requirements Definition	LABOR
		Contract Type	N/A
		Contract Acquisition Codes	
		Contracting Type Contracting Method Set-Aside Decision	
	2	RFP Prep	OTHCONSVCS
		Contract Type	N/A
		Contract Acquisition Codes	
		Contracting Type Contracting Method Set-Aside Decision	
	3	Design (D/B/B)	AESVCS
		Contract Type	IDC AE
		Contract Acquisition Codes	
		Contracting Type Contracting Method Set-Aside Decision	
	4	Design Review	LABOR
	5	Cost Estimating/Specifications	LABOR
	6	Source Selection Evaluation Board	LABOR
			TRAVEL
	7	BCOE Review	LABOR
	8	Design Reserve	CONTINGY
XXXXXX	.61000.01	Construction	
	1	Construction Contract	CONSTSVCS
		Contract Type	Complex Task Order
		Contract Acquisition Codes	
		Contracting Type Contracting Method Set-Aside Decision	
		<u>Tactical Infrastructure</u>	
		<i>Design (D/B)</i>	
		<i>Construction - Fence</i>	
		<i>Construction - Lights</i>	
		<i>Construction - Roads</i>	
		<i>Military Deployment (M&E)</i>	
		<i>Other</i>	Construction Trailer (Office, Util, Admin Tools)
		<u>Facilities</u>	
		<i>Design (D/B)</i>	
		<i>R&A</i>	
		<i>New Construction</i>	
		<i>Modular Construction</i>	
		<i>Other</i>	
		<i># of Agents</i>	<i>Insert #</i>
	2	Management Reserve	CONTINGY
* If construction project will be managed out of RMS, the RMS P2 plug-in must be used at creation of the project			
*Note which Districts RMS vs which District is awarding construction contract. Set up P2 accordingly			
XXXXXX	.61000.02	Construction Oversight	
	1	Construction Oversight	LABOR
			LABOR
			TRAVEL
			GSAVEH
		<i>Oversight Contract</i>	OTHCONSVCS
		Contract Type	N/A
		Contract Acquisition Codes	
		Contracting Type Contracting Method Set-Aside Decision	
	2	Contract Closeout/Warranty	LABOR
	3	Construction Oversight Reserve	CONTINGY
			PROJECT TOTAL

(b) (5)

FY10 M&R Cost	
Item/ Activity	Cost Per Unit
Fence	(b) (5)
Lighting	
Roads	
Vegetation and Debris	
Removal	

Projected Unit Requirments											
Item/ Activity	Base Year	FY12	FY13	FY14	FY15	FY16	FY17	FY18	FY19	FY20	FY21
Fence (Miles)		(b) (5)									
Lighting (Poles)											
Roads (Miles)											
Vegetation and Debris											
Removal (Acres)											

Projected Routine M&R Cost											
Item/ Activity	Base Year	FY12	FY13	FY14	FY15	FY16	FY17	FY18	FY19	FY20	FY21
Fence (Miles)		(b) (5)									
Lighting (Poles)											
Roads (Miles)											
Vegetation and Debris											
Removal (Acres)											

Notes:

1. "Routine M&R" includes CTIMR or Interim Contract level M&R to cleared TI; level of cleared TI increases (b) (5) between FY12 and FY14.

Other M&R			
Description	Category	Year	Cost
NON-RESPONSIVE			

NON-RESPONSIVE

From: (b) (6), (b) (7)(C) -
To: (b) (6), (b) (7)(C)
Cc: (b) (6), (b) (7)(C)
Subject: RE: "levee map"
Date: Thursday, April 06, 2017 3:51:53 PM

Thank you, (b) (6) I know this wasn't an easy undertaking and appreciate you taking the time to highlight the changes. I think these maps will help clarify some confusion for the staff.

Separate from the levee fence/wall, the first two maps include the O-1 and O-3 segments of the non-levee fence. Do you have the map of the (b) (6) miles of the O-2 segment that we could add?

Thank you,

(b) (6), (b) (7)(C)

(b) (6), (b) (7)(C)

Office of Congressional Affairs
U.S. Customs and Border Protection

(b) (6), (b) (7)(C)

From: (b) (6)
Sent: Thursday, April 6, 2017 3:34 PM
To: (b) (6), (b) (7)(C)

(b) (6), (b) (7)(C)
(b) (6), (b) (7)(C)
(b) (6), (b) (7)(C)

Cc: (b) (6), (b) (7)(C)

(b) (6), (b) (7)(C)
(b) (6), (b) (7)(C)

Subject: RE: 'levee map'

Attached is the requested map. Please accept apologies for the delay, it took longer to break out the sections than expected.

The attached map shows the following:

The Teal color is the proposed barrier.

The maps highlight the modification in proposed barrier by showing the added sections in highlighted green.

The segment that was removed is the barrier on the south levee in (b) (7)(E)

Where the new segment is a part of another segment, we are showing the new segment length in the green box, and the total segment length in the teal box.

Please let me know if you have any other questions.

Thanks,

(b) (6)

(b) (6)

From: (b) (6), (b) (7)(C)

Sent: Thursday, April 06, 2017 1:33 PM

To: (b) (6), (b) (7)(C)

(b) (6), (b) (7)(C)

Cc: (b) (6), (b) (7)(C)

(b) (6), (b) (7)(C)

Subject: RE: 'levee map'

All –

In speaking with (b) (6), (b) (7)(C) we are producing a new set of maps that clearly show what has changed. We are targeting a 2 pm completion time for those maps.

I will be heading out soon, so please – contact (b) (6), (b) (7)(C) or (b) (6), (b) (7)(C) in my absence

(b) (6), (b) (7)(C)

Director, Business Operations Division (Acting)
Border Patrol & Air and Marine Program Management Office
Facilities Management and Engineering
Office of Facilities and Asset Management

(b) (6), (b) (7)(C)

From: (b) (6), (b) (7)(C)

Sent: Thursday, April 06, 2017 12:32 PM

To: (b) (6), (b) (7)(C)

(b) (6), (b) (7)(C)

Cc: (b) (6), (b) (7)(C)

(b) (6), (b) (7)(C)

Subject: RE: 'levee map'

Thank you, (b) (6), (b) (7)(C)

Unfortunately, because it was not conveyed to OCA that the “updated map” reflected a change in

the USBP requirements, that was not communicated to the staff and so there will be further confusion. Additionally, B1 and C1 briefed the staff and members on a request based on a requirement that included the double wall. Has this updated requirement been briefed to leadership?

Thank you,

(b) (6), (b) (7)(C)

From: (b) (6), (b) (7)(C)

Sent: Thursday, April 6, 2017 12:29 PM

To: (b) (6), (b) (7)(C)

(b) (6), (b) (7)(C)

Cc: (b) (6), (b) (7)(C)

(b) (6), (b) (7)(C)

Subject: RE: 'levee map'

(b) (6), (b) (7)(C) – Per our conversation, to discuss the operational requirements, please reach out to (b) (6), (b) (7)(C) or (b) (6), (b) (7)(C).

(b) (6), (b) (7)(C)

Director, Business Operations Division (Acting)
Border Patrol & Air and Marine Program Management Office
Facilities Management and Engineering
Office of Facilities and Asset Management

(b) (6), (b) (7)(C)

From: (b) (6), (b) (7)(C)

Sent: Thursday, April 06, 2017 12:13 PM

To: (b) (6), (b) (7)(C)

(b) (6), (b) (7)(C)

Cc: (b) (6), (b) (7)(C)

(b) (6), (b) (7)(C)

Subject: RE: 'levee map'

(b) (6), (b) (7)(C) can you please call me?

(b) (6), (b) (7)(C)

From: (b) (6), (b) (7)(C)

Sent: Thursday, April 6, 2017 12:09 PM

To: (b) (6), (b) (7)(C)

(b) (6), (b) (7)(C)

Cc: (b) (6), (b) (7)(C)

Subject: RE: 'levee map'

Attached, please let me know if you need anything else.

(b) (6), (b) (7)(C)

Director, Business Operations Division (Acting)
Border Patrol & Air and Marine Program Management Office
Facilities Management and Engineering
Office of Facilities and Asset Management

(b) (6), (b) (7)(C)

From: (b) (6), (b) (7)(C) .

Sent: Thursday, April 06, 2017 12:06 PM

To: (b) (6), (b) (7)(C)

Cc: (b) (6), (b) (7)(C)

Subject: RE: 'levee map'

Thank you (b) (6), (b) (7) – I know folks are working as fast as possible but I was told by the staff that they need a response within the next few minutes. Is there anything we can provide on the (b) (7)(E) mileage or the mileage in (b) (7)(E) if not the whole answer?

Thank you!

From: (b) (6), (b) (7)(C)

Sent: Thursday, April 6, 2017 12:00 PM

To: (b) (6), (b) (7)(C)

Cc: (b) (6), (b) (7)(C)

Subject: RE: 'levee map'

I realize it is 11:59 and you asked for this by noon – know that we are working as fast as we can to get you an update and will send asap.

(b) (6), (b) (7)(C)

Director, Business Operations Division (Acting)
Border Patrol & Air and Marine Program Management Office
Facilities Management and Engineering
Office of Facilities and Asset Management

(b) (6), (b) (7)(C)

From: (b) (6), (b) (7)(C)

Sent: Thursday, April 06, 2017 11:39 AM

To: (b) (6), (b) (7)(C)

Cc: (b) (6), (b) (7)(C)

Subject: RE: 'levee map'

Thank you!

From: (b) (6), (b) (7)(C)

Sent: Thursday, April 6, 2017 11:38 AM

To: (b) (6), (b) (7)(C)

Cc: (b) (6), (b) (7)(C)

Subject: RE: 'levee map'

(b) (6), (b) (7)(C) – we are looking at it now, stay tuned.

(b) (6), (b) (7)(C)

Director, Business Operations Division (Acting)
Border Patrol & Air and Marine Program Management Office
Facilities Management and Engineering
Office of Facilities and Asset Management

(b) (6), (b) (7)(C)

From: (b) (6), (b) (7)(C)

Sent: Thursday, April 06, 2017 11:16 AM

To: (b) (6), (b) (7)(C)

Cc: (b) (6), (b) (7)(C)

Subject: RE: 'levee map'

Importance: High

All,

Staff has pointed out that the zone project breakdown, attached here, which was provided by Chief Vitiello to accompany USBP's narrative includes mileage for each zone. This was circulated on March 23 as a getback to a conference call. They are questioning the mileage of (b) (7)(E) now that the updated map has eliminated the double wall. They have also pointed out that the zone project breakdown ends at (b) (7)(E), and the map clearly show proposed wall into (b) (7)(E).

Can we update this chart or provide them with an accurate mileage breakout by zone? They are working to justify spending in the bill and need to be able to explain where these projects are located. We need to provide staff a response as soon as possible, **by Noon the latest**.

Thank you,

(b) (6), (b) (7)(C)

From: (b) (6), (b) (7)(C)

Sent: Thursday, April 6, 2017 10:32 AM

To: (b) (6), (b) (7)(C)

(b) (6), (b) (7)(C)

Cc: (b) (6), (b) (7)(C)

(b) (6), (b) (7)(C) >

Subject: RE: 'levee map'

Here is a more zoomed in version of that map so hopefully the zones are broken out a bit more clearly for you. Please let me know if you need anything else ☺

(b) (6), (b) (7)(C)

Business Operations

OFAM / BPAM PMO

(b) (6), (b) (7)(C)

(b) (6), (b) (7)(C)

(b) (6), (b) (7)(C)

From: (b) (6), (b) (7)(C)

Sent: Thursday, April 06, 2017 10:19 AM

To: (b) (6), (b) (7)(C)

(b) (6), (b) (7)(C)

Cc: (b) (6), (b) (7)(C)

(b) (6), (b) (7)(C)

Subject: RE: 'levee map'

Thank you!

(b) (6), (b) (7)(C)

Office of Congressional Affairs
U.S. Customs and Border Protection

(b) (6), (b) (7)(C)

From: (b) (6), (b) (7)(C)

Sent: Thursday, April 6, 2017 9:53 AM

To: (b) (6), (b) (7)(C)

Cc: (b) (6), (b) (7)(C)

Subject: RE: 'flevee map'

Updated map attached

(b) (6), (b) (7)(C)

Director, Business Operations Division (Acting)
Border Patrol & Air and Marine Program Management Office
Facilities Management and Engineering
Office of Facilities and Asset Management

(b) (6), (b) (7)(C)

From: (b) (6), (b) (7)(C)

Sent: Thursday, April 06, 2017 9:36 AM

To: (b) (6), (b) (7)(C)

Cc: (b) (6), (b) (7)(C)

Subject: RE: 'flevee map'

Thank you, (b) (6), (b) (7)(C) and (b) (6), (b) (7)(C)

(b) (6), (b) (7)(C) would you have time now to walk through the zones and segments on the RGV section (pg. 72-82) of the attached maps? I'm at (b) (6), (b) (7)(C)

I'm just looking to be able to say to staff (b) (7)(E) existing pedestrian fence is segments O-X, O-Y-, OZ and that is "flevee" because they are confused by the labels of pedestrian existing, proposed barrier and then the labels used in the request.

Thank you,

(b) (6), (b) (7)(C)

From: (b) (6), (b) (7)(C)

Sent: Thursday, April 6, 2017 9:24 AM

To: (b) (6), (b) (7)(C)

Cc: (b) (6), (b) (7)(C)

Subject: RE: 'levee map'

Hi (b) (6), (b) (7)(C) –

Yes to both of your questions.

We will have an updated map by 10 am and (b) (6), (b) (7)(C), cc'd here, is available to walk you through the map labels as well. Please let us know when you are free and what # she can reach you at.

(b) (6), (b) (7)(C)

Director, Business Operations Division (Acting)
Border Patrol & Air and Marine Program Management Office
Facilities Management and Engineering
Office of Facilities and Asset Management

(b) (6), (b) (7)(C)

From: (b) (6), (b) (7)(C)

Sent: Thursday, April 06, 2017 8:50 AM

To: (b) (6), (b) (7)(C)

Cc: (b) (6), (b) (7)(C)

Subject: RE: 'levee map'

Importance: High

Good Morning All,

Staff has indicated they need to provide their leadership with a response on the appearance of the two parallel levee fences in (b) (7)(E) by **this morning at 10 am**. Have you made any progress with USBP or do we need to elevate this with their leadership this morning?

Additional the staff is very confused regarding the difference between the segment labels and the zones. Can we walk through the various segments of existing and planned fencing in RGV shown in the attached maps this morning so that we can try and provide some clarity on that front and hopefully avoid a fire drill phone request from the staff?

Thank you,

(b) (6), (b) (7)(C)

(b) (6), (b) (7)(C)

Office of Congressional Affairs
U.S. Customs and Border Protection

(b) (6), (b) (7)(C)

From: (b) (6), (b) (7)(C) .

Sent: Tuesday, April 4, 2017 2:09 PM

To: (b) (6), (b) (7)(C)

Cc: (b) (6), (b) (7)(C)

Subject: RE: 'levee map'

Ok thanks, that's helpful to know that it isn't just an issue with the map.

Thanks,

(b) (6), (b) (7)(C)

(b) (6), (b) (7)(C)

Office of Congressional Affairs
U.S. Customs and Border Protection

(b) (6), (b) (7)(C)

From: (b) (6), (b) (7)(C)

Sent: Tuesday, April 4, 2017 1:58 PM

To: (b) (6), (b) (7)(C)

Cc: (b) (6), (b) (7)(C)

Subject: RE: 'levee map'

I will defer to (b) (6), (b) (7)(C) on what was shared beforehand.

It is not a software issue – we are working through the potential 2nd wall with USBP and as soon as we have it resolved, we will be sure to pass it along.

(b) (6), (b) (7)(C)

Director, Business Operations Division (Acting)
Border Patrol & Air and Marine Program Management Office
Facilities Management and Engineering

Office of Facilities and Asset Management

(b) (6), (b) (7)(C)

From: (b) (6), (b) (7)(C)

Sent: Tuesday, April 04, 2017 1:45 PM

To: (b) (6), (b) (7)(C)

Cc: (b) (6), (b) (7)(C)

Subject: RE: 'levee map'

Hi (b) (6), (b) (7)(C)

Just to confirm, there have not been any updates made to this map since we last shared with staff, correct?

Do we know if the issue with double is just in the mapping software or is there potentially a 2nd wall? I can explain to staff that we are working to correct the issue with the map but in the meantime ask that they ignore the "double wall" if we've confirmed that the issue is with the map and a double wall does not exist in the field.

Thank you,

(b) (6), (b) (7)(C)

From: (b) (6), (b) (7)(C)

Sent: Tuesday, April 4, 2017 1:37 PM

To: (b) (6), (b) (7)(C)

Cc: (b) (6), (b) (7)(C)

Subject: RE: 'levee map'

Hi (b) (6), (b) (7)(C) – Attached is the map. Please note that we are still addressing the area in (b) (7)(E) that shows 2 levees and 2 walls. We are working with USBP to resolve this.

(b) (6), (b) (7)(C)

Director, Business Operations Division (Acting)
Border Patrol & Air and Marine Program Management Office
Facilities Management and Engineering
Office of Facilities and Asset Management

(b) (6), (b) (7)(C)

From: (b) (6), (b) (7)(C)

Sent: Tuesday, April 04, 2017 10:59 AM

To: (b) (6), (b) (7)(C)

Cc: (b) (6), (b) (7)(C)

Subject: RE: 'levee map'

Good Morning,

Thank you again for the assistance with the levee wall photos. Are we still tracking to have an updated map to share with the staff this morning?

Thanks again,

(b) (6), (b) (7)(C)

(b) (6), (b) (7)(C)

Office of Congressional Affairs

U.S. Customs and Border Protection

(b) (6), (b) (7)(C)

From: (b) (6), (b) (7)(C)

Sent: Monday, April 3, 2017 6:42 PM

To: (b) (6), (b) (7)(C)

Cc: (b) (6), (b) (7)(C)

Subject: RE: 'levee map'

Hi (b) (6), (b) (7)(C) – We are working this. Photos are coming shortly. Maps will be in the am.

(b) (6), (b) (7)(C)

Director, Business Operations Division (Acting)

Border Patrol & Air and Marine Program Management Office

Facilities Management and Engineering

Office of Facilities and Asset Management

(b) (6), (b) (7)(C)

From: (b) (6), (b) (7)(C)

Sent: Monday, April 03, 2017 5:33 PM

To: (b) (6), (b) (7)(C)

Cc: (b) (6), (b) (7)(C)

Subject: RE: 'levee map'

Staff has asked if we will have something to share tonight. Are we still tracking to have the updated map and pictures for them for this evening?

Thanks again,

(b) (6), (b) (7)(C)

From: (b) (6), (b) (7)(C)
Sent: Monday, April 03, 2017 3:14:41 PM
To: (b) (6), (b) (7)(C)
Cc: (b) (6), (b) (7)(C)
Subject: RE: 'levee map'

Stand by. We'll get something.

(b) (6), (b) (7)(C)

From: (b) (6), (b) (7)(C)
Sent: Monday, April 3, 2017 3:14 PM
To: (b) (6), (b) (7)(C)
Cc: (b) (6), (b) (7)(C)
Subject: RE: 'levee map'

Is there an updated map that reflects that?

From: (b) (6), (b) (7)(C)
Sent: Monday, April 03, 2017 3:06:27 PM
To: (b) (6), (b) (7)(C)
Cc: (b) (6), (b) (7)(C)
Subject: RE: 'levee map'

The doubles wall has been removed -

(b) (6), (b) (7)(C)

From: (b) (6), (b) (7)(C)
Sent: Monday, April 03, 2017 2:55 PM
To: (b) (6), (b) (7)(C)
Cc: (b) (6), (b) (7)(C)
Subject: RE: 'levee map'

Thanks (b) (6), (b) (7)(C) We'll send the MR394 map and follow up with USBP.

Appreciate your help,

(b) (6), (b) (7)(C)

From: (b) (6), (b) (7)(C)

Sent: Monday, April 3, 2017 2:45 PM

To: (b) (6), (b) (7)(C)

Cc: (b) (6), (b) (7)(C)

(b) (6), (b) (7)(C) >

Subject: RE: 'levee map'

(b) (6), (b) (7)(C) – USBP was supposed to answer the double layer requirement question. I would follow up with them. As far as answering (b) (6), (b) (7)(C) question, the second map MR 394 should do it. I would not send the O1_O3 map.

(b) (6), (b) (7)(C)

(b) (6), (b) (7)(C)

From: (b) (6), (b) (7)(C)

Sent: Monday, April 3, 2017 2:27 PM

To: (b) (6), (b) (7)(C)

Cc: (b) (6), (b) (7)(C)

Subject: FW: 'levee map'

Removing (b) (6), (b) (7)(C)

(b) (6), (b) (7)(C)

You had recently provided, and we shared with the staff the attached maps with the proposed wall and levee wall. Not looking to add to the workload, I can resend either of these maps to the staff, per this new request.

My one question was did we find out why it looks like a double wall in (b) (7)(E) on both of these maps?

Thanks again,

(b) (6), (b) (7)(C)

(b) (6), (b) (7)(C)

Office of Congressional Affairs

U.S. Customs and Border Protection

(b) (6), (b) (7)(C)

From: (b) (6), (b) (7)(C)

Sent: Monday, April 3, 2017 2:09 PM

To: (b) (6), (b) (7)(C)

Cc: (b) (6), (b) (7)(C)

Subject: 'levee map'

Many thanks for getting on the line today. Do you have any good maps of the current or proposed levee? Apologize if we already have this somewhere. If so, please forward.

From: (b) (6), (b) (7)(C)
To: (b) (6), (b) (7)(C)
Cc: (b) (6), (b) (7)(C)
Subject: RE: "levee map"
Date: Thursday, April 06, 2017 4:01:53 PM

02 is not part of the fy17 build

(b) (6), (b) (7)(C)

From: (b) (6), (b) (7)(C)
Sent: Thursday, April 06, 2017 3:52 PM
To: (b) (6), (b) (7)(C)

Cc: (b) (6), (b) (7)(C)

Subject: RE: 'levee map'

Thank you, (b) (6), (b) (7)(C) I know this wasn't an easy undertaking and appreciate you taking the time to highlight the changes. I think these maps will help clarify some confusion for the staff.

Separate from the levee fence/wall, the first two maps include the O-1 and O-3 segments of the non-levee fence. Do you have the map of the (b) (6), (b) (7)(C) miles of the O-2 segment that we could add?

Thank you,

(b) (6), (b) (7)(C)

(b) (6), (b) (7)(C)

Office of Congressional Affairs
U.S. Customs and Border Protection

(b) (6), (b) (7)(C)

From: (b) (6), (b) (7)(C)
Sent: Thursday, April 6, 2017 3:34 PM
To: (b) (6), (b) (7)(C)

Cc: (b) (6), (b) (7)(C)

(b) (6), (b) (7)(C)

Subject: RE: 'levee map'

Attached is the requested map. Please accept apologies for the delay, it took longer to break out the sections than expected.

The attached map shows the following:

The Teal color is the proposed barrier.

The maps highlight the modification in proposed barrier by showing the added sections in highlighted green.

The segment that was removed is the barrier on the south levee in (b) (7)(E)

Where the new segment is a part of another segment, we are showing the new segment length in the green box, and the total segment length in the teal box.

Please let me know if you have any other questions.

Thanks,

(b) (6), (b) (7)(C)

(b) (6), (b) (7)(C)

From: (b) (6), (b) (7)(C)

Sent: Thursday, April 06, 2017 1:33 PM

To: (b) (6), (b) (7)(C)

(b) (6), (b) (7)(C)
(b) (6), (b) (7)(C)

Cc: (b) (6), (b) (7)(C)

(b) (6), (b) (7)(C)
(b) (6), (b) (7)(C)

Subject: RE: 'levee map'

All –

In speaking with (b) (6), (b) (7)(C) we are producing a new set of maps that clearly show what has changed. We are targeting a 2 pm completion time for those maps.

I will be heading out soon, so please – contact (b) (6), (b) (7)(C) or (b) (6), (b) (7)(C) in my absence

(b) (6), (b) (7)(C)

Director, Business Operations Division (Acting)
Border Patrol & Air and Marine Program Management Office
Facilities Management and Engineering
Office of Facilities and Asset Management

(b) (6), (b) (7)(C)

From: (b) (6), (b) (7)(C)

Sent: Thursday, April 06, 2017 12:32 PM

To: (b) (6), (b) (7)(C)

(b) (6), (b) (7)(C)

(b) (6), (b) (7)(C) >

Cc: (b) (6), (b) (7)(C)

(b) (6), (b) (7)(C)

(b) (6), (b) (7)(C)

Subject: RE: 'levee map'

Thank you, (b) (6), (b) (7)(C)

Unfortunately, because it was not conveyed to OCA that the "updated map" reflected a change in the USBP requirements, that was not communicated to the staff and so there will be further confusion. Additionally, B1 and C1 briefed the staff and members on a request based on a requirement that included the double wall. Has this updated requirement been briefed to leadership?

Thank you,

(b) (6), (b) (7)(C)

From: (b) (6), (b) (7)(C)

Sent: Thursday, April 6, 2017 12:29 PM

To: (b) (6), (b) (7)(C)

(b) (6), (b) (7)(C)

(b) (6), (b) (7)(C)

Cc: (b) (6), (b) (7)(C)

(b) (6), (b) (7)(C)

(b) (6), (b) (7)(C)

Subject: RE: 'levee map'

(b) (6), (b) (7)(C) – Per our conversation, to discuss the operational requirements, please reach out to (b) (6), (b) (7)(C) or (b) (6), (b) (7)(C).

(b) (6), (b) (7)(C)

Director, Business Operations Division (Acting)
Border Patrol & Air and Marine Program Management Office
Facilities Management and Engineering
Office of Facilities and Asset Management

(b) (6), (b) (7)(C)

From: (b) (6), (b) (7)(C)

Sent: Thursday, April 06, 2017 12:13 PM

To: (b) (6), (b) (7)(C)

(b) (6), (b) (7)(C)

Cc: (b) (6), (b) (7)(C)

Subject: RE: 'levee map'

(b) (6), (b) (7)(C) can you please call me?

(b) (6), (b) (7)(C)

From: (b) (6), (b) (7)(C)

Sent: Thursday, April 6, 2017 12:09 PM

To: (b) (6), (b) (7)(C)

Cc: (b) (6), (b) (7)(C)

Subject: RE: 'levee map'

Attached, please let me know if you need anything else.

(b) (6), (b) (7)(C)

Director, Business Operations Division (Acting)
Border Patrol & Air and Marine Program Management Office
Facilities Management and Engineering
Office of Facilities and Asset Management

(b) (6), (b) (7)(C)

From: (b) (6), (b) (7)(C)

Sent: Thursday, April 06, 2017 12:06 PM

To: (b) (6), (b) (7)(C)

Cc: (b) (6), (b) (7)(C)

Subject: RE: 'levee map'

Thank you (b) (6), (b) (7)(C) – I know folks are working as fast as possible but I was told by the staff that they need a response within the next few minutes. Is there anything we can provide on the (b) (7)(E) mileage or the mileage in (b) (7)(E), if not the whole answer?

Thank you!

From: (b) (6), (b) (7)(C)

Sent: Thursday, April 6, 2017 12:00 PM

To: (b) (6), (b) (7)(C)

Cc: (b) (6), (b) (7)(C)

Subject: RE: 'levee map'

I realize it is 11:59 and you asked for this by noon – know that we are working as fast as we can to get you an update and will send asap.

(b) (6), (b) (7)(C)

Director, Business Operations Division (Acting)
Border Patrol & Air and Marine Program Management Office
Facilities Management and Engineering
Office of Facilities and Asset Management

(b) (6), (b) (7)(C)

From: (b) (6), (b) (7)(C)

Sent: Thursday, April 06, 2017 11:39 AM

To: (b) (6), (b) (7)(C)

Cc: (b) (6), (b) (7)(C)

Subject: RE: 'levee map'

Thank you!

From: (b) (6), (b) (7)(C)

Sent: Thursday, April 6, 2017 11:38 AM

To: (b) (6), (b) (7)(C)

Cc: (b) (6), (b) (7)(C)

Subject: RE: 'levee map'

(b) (6), (b) (7)(C) – we are looking at it now, stay tuned.

(b) (6), (b) (7)(C)

Director, Business Operations Division (Acting)

Border Patrol & Air and Marine Program Management Office
Facilities Management and Engineering
Office of Facilities and Asset Management
(b) (6), (b) (7)(C)

From: (b) (6), (b) (7)(C) .

Sent: Thursday, April 06, 2017 11:16 AM

To: (b) (6), (b) (7)(C)

Cc: (b) (6), (b) (7)(C)

Subject: RE: 'levee map'

Importance: High

All,

Staff has pointed out that the zone project breakdown, attached here, which was provided by Chief Vitiello to accompany USBP's narrative includes mileage for each zone. This was circulated on March 23 as a getback to a conference call. They are questioning the mileage of (b) (7)(E) now that the updated map has eliminated the double wall. They have also pointed out that the zone project breakdown ends at (b) (7)(E) and the map clearly show proposed wall into (b) (7)(E).

Can we update this chart or provide them with an accurate mileage breakout by zone? They are working to justify spending in the bill and need to be able to explain where these projects are located. We need to provide staff a response as soon as possible, **by Noon the latest.**

Thank you,

(b) (6), (b) (7)(C)

From: (b) (6), (b) (7)(C) .

Sent: Thursday, April 6, 2017 10:32 AM

To: (b) (6), (b) (7)(C)

Cc: (b) (6), (b) (7)(C)

Subject: RE: 'levee map'

Here is a more zoomed in version of that map so hopefully the zones are broken out a bit more clearly for you. Please let me know if you need anything else ☺

(b) (6), (b) (7)(C)

Business Operations

OFAM / BPAM PMO

(b) (6), (b) (7)(C)

[REDACTED]

[REDACTED]

From: (b) (6), (b) (7)(C) .

Sent: Thursday, April 06, 2017 10:19 AM

To: (b) (6), (b) (7)(C)

[REDACTED]

Cc: (b) (6), (b) (7)(C)

[REDACTED]

Subject: RE: 'levee map'

Thank you!

(b) (6), (b) (7)(C)

Office of Congressional Affairs

U.S. Customs and Border Protection

(b) (6), (b) (7)(C)

From: (b) (6), (b) (7)(C)

Sent: Thursday, April 6, 2017 9:53 AM

To: (b) (6), (b) (7)(C)

[REDACTED]

Cc: (b) (6), (b) (7)(C)

[REDACTED]

Subject: RE: 'levee map'

Updated map attached

(b) (6), (b) (7)(C)

Director, Business Operations Division (Acting)

Border Patrol & Air and Marine Program Management Office

Facilities Management and Engineering

Office of Facilities and Asset Management

(b) (6), (b) (7)(C)

From: (b) (6), (b) (7)(C) .

Sent: Thursday, April 06, 2017 9:36 AM

To: (b) (6), (b) (7)(C)

[REDACTED]

>

Cc: (b) (6), (b) (7)(C)

Subject: RE: 'flevee map'

Thank you, (b) (6), (b) (7)(C) and (b) (6), (b) (7)(C)

(b) (6), (b) (7)(C) would you have time now to walk through the zones and segments on the RGV section (pg. 72-82) of the attached maps? I'm at (b) (6), (b) (7)(C).

I'm just looking to be able to say to staff (b) (7)(E) existing pedestrian fence is segments O-X, O-Y-, OZ and that is "flevee" because they are confused by the labels of pedestrian existing, proposed barrier and then the labels used in the request.

Thank you,

(b) (6), (b) (7)(C)

From: (b) (6), (b) (7)(C)

Sent: Thursday, April 6, 2017 9:24 AM

To: (b) (6), (b) (7)(C)

Cc: (b) (6), (b) (7)(C)

Subject: RE: 'flevee map'

Hi (b) (6), (b) (7)(C) –

Yes to both of your questions.

We will have an updated map by 10 am and (b) (6), (b) (7)(C), cc'd here, is available to walk you through the map labels as well. Please let us know when you are free and what # she can reach you at.

(b) (6), (b) (7)(C)

Director, Business Operations Division (Acting)
Border Patrol & Air and Marine Program Management Office
Facilities Management and Engineering
Office of Facilities and Asset Management

(b) (6), (b) (7)(C)

From: (b) (6), (b) (7)(C)

Sent: Thursday, April 06, 2017 8:50 AM

To: (b) (6), (b) (7)(C)

Cc: (b) (6), (b) (7)(C)

(b) (6), (b) (7)(C)

Subject: RE: 'levee map'

Importance: High

Good Morning All,

Staff has indicated they need to provide their leadership with a response on the appearance of the two parallel levee fences in (b) (7)(E) by **this morning at 10 am**. Have you made any progress with USBP or do we need to elevate this with their leadership this morning?

Additional the staff is very confused regarding the difference between the segment labels and the zones. Can we walk through the various segments of existing and planned fencing in RGV shown in the attached maps this morning so that we can try and provide some clarity on that front and hopefully avoid a fire drill phone request from the staff?

Thank you,

(b) (6), (b) (7)(C)

(b) (6), (b) (7)(C)

Office of Congressional Affairs

U.S. Customs and Border Protection

(b) (6), (b) (7)(C)

From: (b) (6), (b) (7)(C)

Sent: Tuesday, April 4, 2017 2:09 PM

To: (b) (6), (b) (7)(C)

Cc: (b) (6), (b) (7)(C)

Subject: RE: 'levee map'

Ok thanks, that's helpful to know that it isn't just an issue with the map.

Thanks,

(b) (6), (b) (7)(C)

(b) (6), (b) (7)(C)

Office of Congressional Affairs

U.S. Customs and Border Protection

(b) (6), (b) (7)(C)

From: (b) (6), (b) (7)(C)

Sent: Tuesday, April 4, 2017 1:58 PM

To: (b) (6), (b) (7)(C)

Cc: (b) (6), (b) (7)(C)

Subject: RE: 'levee map'

I will defer to (b) (6), (b) (7)(C) on what was shared beforehand.

It is not a software issue – we are working through the potential 2nd wall with USBP and as soon as we have it resolved, we will be sure to pass it along.

(b) (6), (b) (7)(C)

Director, Business Operations Division (Acting)
Border Patrol & Air and Marine Program Management Office
Facilities Management and Engineering
Office of Facilities and Asset Management

(b) (6), (b) (7)(C)

From: (b) (6), (b) (7)(C)

Sent: Tuesday, April 04, 2017 1:45 PM

To: (b) (6), (b) (7)(C)

Cc: (b) (6), (b) (7)(C)

Subject: RE: 'levee map'

Hi (b) (6), (b) (7)(C)

Just to confirm, there have not been any updates made to this map since we last shared with staff, correct?

Do we know if the issue with double is just in the mapping software or is there potentially a 2nd wall? I can explain to staff that we are working to correct the issue with the map but in the meantime ask that they ignore the “double wall” if we’ve confirmed that the issue is with the map and a double wall does not exist in the field.

Thank you,

(b) (6), (b) (7)(C)

From: (b) (6), (b) (7)(C)

Sent: Tuesday, April 4, 2017 1:37 PM

To: (b) (6), (b) (7)(C)

Cc: [REDACTED] (b) (6), (b) (7)(C)

Subject: RE: 'levee map'

Hi [REDACTED] (b) (6), (b) (7)(C) – Attached is the map. Please note that we are still addressing the area in [REDACTED] (b) (7)(E) that shows 2 levees and 2 walls. We are working with USBP to resolve this.

[REDACTED] (b) (6), (b) (7)(C)

Director, Business Operations Division (Acting)
Border Patrol & Air and Marine Program Management Office
Facilities Management and Engineering
Office of Facilities and Asset Management

[REDACTED] (b) (6), (b) (7)(C)

From: [REDACTED] (b) (6), (b) (7)(C)

Sent: Tuesday, April 04, 2017 10:59 AM

To: [REDACTED] (b) (6), (b) (7)(C)

Cc: [REDACTED] (b) (6), (b) (7)(C)

Subject: RE: 'levee map'

Good Morning,

Thank you again for the assistance with the levee wall photos. Are we still tracking to have an updated map to share with the staff this morning?

Thanks again,

[REDACTED] (b) (6), (b) (7)(C)

[REDACTED] (b) (6), (b) (7)(C)

Office of Congressional Affairs
U.S. Customs and Border Protection

[REDACTED] (b) (6), (b) (7)(C)

From: [REDACTED] (b) (6), (b) (7)(C)

Sent: Monday, April 3, 2017 6:42 PM

To: [REDACTED] (b) (6), (b) (7)(C)

Cc: [REDACTED] (b) (6), (b) (7)(C)

Subject: RE: 'levee map'

Hi (b) (6), (b) (7)(C) – We are working this. Photos are coming shortly. Maps will be in the am.

(b) (6), (b) (7)(C)

Director, Business Operations Division (Acting)
Border Patrol & Air and Marine Program Management Office
Facilities Management and Engineering
Office of Facilities and Asset Management

(b) (6), (b) (7)(C)

From: (b) (6), (b) (7)(C)

Sent: Monday, April 03, 2017 5:33 PM

To: (b) (6), (b) (7)(C)

Cc: (b) (6), (b) (7)(C)

Subject: RE: 'levee map'

Staff has asked if we will have something to share tonight. Are we still tracking to have the updated map and pictures for them for this evening?

Thanks again,

(b) (6), (b) (7)(C)

From: (b) (6), (b) (7)(C)

Sent: Monday, April 03, 2017 3:14:41 PM

To: (b) (6), (b) (7)(C)

Cc: (b) (6), (b) (7)(C)

Subject: RE: 'levee map'

Stand by. We'll get something.

(b) (6), (b) (7)(C)

From: (b) (6), (b) (7)(C)

Sent: Monday, April 3, 2017 3:14 PM

To: (b) (6), (b) (7)(C)

Cc: (b) (6), (b) (7)(C)

Subject: RE: 'levee map'

Is there an updated map that reflects that?

From: (b) (6), (b) (7)(C)

Sent: Monday, April 03, 2017 3:06:27 PM

To: (b) (6), (b) (7)(C)

Cc: (b) (6), (b) (7)(C)

Subject: RE: 'flevee map'

The doubles wall has been removed -

(b) (6), (b) (7)(C)

From: (b) (6), (b) (7)(C)

Sent: Monday, April 03, 2017 2:55 PM

To: (b) (6), (b) (7)(C)

Cc: (b) (6), (b) (7)(C)

Subject: RE: 'flevee map'

Thanks (b) (6), (b) (7)(C) We'll send the MR394 map and follow up with USBP.

Appreciate your help,

(b) (6), (b) (7)(C)

From: (b) (6), (b) (7)(C)

Sent: Monday, April 3, 2017 2:45 PM

To: (b) (6), (b) (7)(C)

Cc: (b) (6), (b) (7)(C)

Subject: RE: 'flevee map'

(b) (6), (b) (7)(C) – USBP was supposed to answer the double layer requirement question. I would follow up with them. As far as answering (b) (6), (b) (7)(C) question, the second map MR 394 should do it. I would not send the O1_O3 map.

(b) (6), (b) (7)(C)

From: (b) (6), (b) (7)(C)

Sent: Monday, April 3, 2017 2:27 PM

To: (b) (6), (b) (7)(C)

Cc: (b) (6), (b) (7)(C)

Subject: FW: 'flevee map'

Removing (b) (6), (b) (7)(C)

(b) (6), (b) (7)(C)

You had recently provided, and we shared with the staff the attached maps with the proposed wall and levee wall. Not looking to add to the workload, I can resend either of these maps to the staff, per this new request.

My one question was did we find out why it looks like a double wall in (b) (7)(E) on both of these maps?

Thanks again,

(b) (6), (b) (7)(C)

(b) (6), (b) (7)(C)

Office of Congressional Affairs

U.S. Customs and Border Protection

(b) (6), (b) (7)(C)

From: (b) (6), (b) (7)(C)

Sent: Monday, April 3, 2017 2:09 PM

To: (b) (6), (b) (7)(C)

Cc: (b) (6), (b) (7)(C)

Subject: 'levee map'

Many thanks for getting on the line today. Do you have any good maps of the current or proposed levee? Apologize if we already have this somewhere. If so, please forward.

From: (b) (6), (b) (7)(C) -
To: (b) (6), (b) (7)(C)
Cc: (b) (6), (b) (7)(C)
Subject: RE: "levee map"
Date: Thursday, April 06, 2017 5:45:23 PM

All,

Staff appreciated the additional maps and has asked about mitigating environmental impacts.

Specifically, "Given that the barrier is (b) (7)(E) and it will be connecting existing segments along the border near wildlife areas, are there any plans to mitigate impact on wildlife in terms of allowing movement across the border?"

Could you please provide a brief response?

Thank you,

(b) (6), (b) (7)(C)

From: (b) (6)
Sent: Thursday, April 06, 2017 4:01:55 PM
To: (b) (6), (b) (7)(C)
Cc: (b) (6), (b) (7)(C)
Subject: RE: 'levee map'

(b) (6), (b) (7)(C)

Since we are not considering O-2 in the FY17 plan, we don't have it in that map set.
Here is the standalone map.

Thanks,

(b) (6)

(b) (6)

From: (b) (6), (b) (7)(C)
Sent: Thursday, April 06, 2017 3:52 PM
To: (b) (6), (b) (7)(C)
Cc: (b) (6), (b) (7)(C)

Subject: RE: 'levee map'

Thank you, (b) (6) I know this wasn't an easy undertaking and appreciate you taking the time to highlight the changes. I think these maps will help clarify some confusion for the staff.

Separate from the levee fence/wall, the first two maps include the O-1 and O-3 segments of the non-levee fence. Do you have the map of the (b) (6) miles of the O-2 segment that we could add?

Thank you,

(b) (6), (b) (7)(C)

(b) (6), (b) (7)(C)

Office of Congressional Affairs

U.S. Customs and Border Protection

(b) (6), (b) (7)(C)

From: (b) (6)

Sent: Thursday, April 6, 2017 3:34 PM

To: (b) (6), (b) (7)(C)

(b) (6), (b) (7)(C)

(b) (6), (b) (7)(C)

(b) (6), (b) (7)(C)

Cc: (b) (6), (b) (7)(C)

(b) (6), (b) (7)(C)

(b) (6), (b) (7)(C)

Subject: RE: 'levee map'

Attached is the requested map. Please accept apologies for the delay, it took longer to break out the sections than expected.

The attached map shows the following:

The Teal color is the proposed barrier.

The maps highlight the modification in proposed barrier by showing the added sections in highlighted green.

The segment that was removed is the barrier on the south levee in (b) (7)(E)

Where the new segment is a part of another segment, we are showing the new segment length in the green box, and the total segment length in the teal box.

Please let me know if you have any other questions.

Thanks,

(b) (6)

(b) (6)

From: (b) (6), (b) (7)(C)

Sent: Thursday, April 06, 2017 1:33 PM

To: (b) (6), (b) (7)(C)

(b) (6), (b) (7)(C)
(b) (6), (b) (7)(C)

Cc: (b) (6), (b) (7)(C)

(b) (6), (b) (7)(C)
(b) (6), (b) (7)(C)

Subject: RE: 'levee map'

All –

In speaking with (b) (6), (b) (7)(C) we are producing a new set of maps that clearly show what has changed. We are targeting a 2 pm completion time for those maps.

I will be heading out soon, so please – contact (b) (6), (b) (7)(C) or (b) (6), (b) (7)(C) in my absence

(b) (6), (b) (7)(C)

Director, Business Operations Division (Acting)
Border Patrol & Air and Marine Program Management Office
Facilities Management and Engineering
Office of Facilities and Asset Management

(b) (6), (b) (7)(C)

From: (b) (6), (b) (7)(C)

Sent: Thursday, April 06, 2017 12:32 PM

To: (b) (6), (b) (7)(C)

(b) (6), (b) (7)(C)
(b) (6), (b) (7)(C)

Cc: (b) (6), (b) (7)(C)

(b) (6), (b) (7)(C)
(b) (6), (b) (7)(C)

Subject: RE: 'levee map'

Thank you, (b) (6), (b) (7)(C)

Unfortunately, because it was not conveyed to OCA that the “updated map” reflected a change in the USBP requirements, that was not communicated to the staff and so there will be further confusion. Additionally, B1 and C1 briefed the staff and members on a request based on a requirement that included the double wall. Has this updated requirement been briefed to leadership?

Thank you,

(b) (6), (b) (7)(C)

From: (b) (6), (b) (7)(C)

Sent: Thursday, April 6, 2017 12:29 PM

To: (b) (6), (b) (7)(C)

(b) (6), (b) (7)(C)

Cc: (b) (6), (b) (7)(C)

(b) (6), (b) (7)(C)

Subject: RE: 'levee map'

(b) (6), (b) (7)(C) – Per our conversation, to discuss the operational requirements, please reach out to (b) (6), (b) (7)(C) or (b) (6), (b) (7)(C)

(b) (6), (b) (7)(C)

Director, Business Operations Division (Acting)
Border Patrol & Air and Marine Program Management Office
Facilities Management and Engineering
Office of Facilities and Asset Management

(b) (6), (b) (7)(C)

From: (b) (6), (b) (7)(C)

Sent: Thursday, April 06, 2017 12:13 PM

To: (b) (6), (b) (7)(C)

(b) (6), (b) (7)(C)

Cc: (b) (6), (b) (7)(C)

(b) (6), (b) (7)(C)

Subject: RE: 'levee map'

(b) (6), (b) (7)(C) can you please call me?

(b) (6), (b) (7)(C)

From: (b) (6), (b) (7)(C)

Sent: Thursday, April 6, 2017 12:09 PM

To: (b) (6), (b) (7)(C)

(b) (6), (b) (7)(C)

Cc: (b) (6), (b) (7)(C)

(b) (6), (b) (7)(C)

Subject: RE: 'levee map'

Attached, please let me know if you need anything else.

(b) (6), (b) (7)(C)

Director, Business Operations Division (Acting)
Border Patrol & Air and Marine Program Management Office
Facilities Management and Engineering
Office of Facilities and Asset Management

(b) (6), (b) (7)(C)

From: (b) (6), (b) (7)(C)

Sent: Thursday, April 06, 2017 12:06 PM

To: (b) (6), (b) (7)(C)

Cc: (b) (6), (b) (7)(C)

Subject: RE: 'levee map'

Thank you (b) (6), (b) (7) – I know folks are working as fast as possible but I was told by the staff that they need a response within the next few minutes. Is there anything we can provide on the (b) (7)(E) mileage or the mileage in (b) (7)(E), if not the whole answer?

Thank you!

From: (b) (6), (b) (7)(C)

Sent: Thursday, April 6, 2017 12:00 PM

To: (b) (6), (b) (7)(C)

Cc: (b) (6), (b) (7)(C)

Subject: RE: 'levee map'

I realize it is 11:59 and you asked for this by noon – know that we are working as fast as we can to get you an update and will send asap.

(b) (6), (b) (7)(C)

Director, Business Operations Division (Acting)
Border Patrol & Air and Marine Program Management Office
Facilities Management and Engineering
Office of Facilities and Asset Management

(b) (6), (b) (7)(C)

From: (b) (6), (b) (7)(C)

Sent: Thursday, April 06, 2017 11:39 AM

To: (b) (6), (b) (7)(C)

Cc: (b) (6), (b) (7)(C)

Subject: RE: 'levee map'

Thank you!

From: (b) (6), (b) (7)(C)

Sent: Thursday, April 6, 2017 11:38 AM

To: (b) (6), (b) (7)(C)

Cc: (b) (6), (b) (7)(C)

Subject: RE: 'levee map'

(b) (6), (b) (7)(C) – we are looking at it now, stay tuned.

(b) (6), (b) (7)(C)

Director, Business Operations Division (Acting)
Border Patrol & Air and Marine Program Management Office
Facilities Management and Engineering
Office of Facilities and Asset Management

(b) (6), (b) (7)(C)

From: (b) (6), (b) (7)(C)

Sent: Thursday, April 06, 2017 11:16 AM

To: (b) (6), (b) (7)(C)

Cc: (b) (6), (b) (7)(C)

Subject: RE: 'levee map'

Importance: High

All,

Staff has pointed out that the zone project breakdown, attached here, which was provided by Chief Vitiello to accompany USBP's narrative includes mileage for each zone. This was circulated on March 23 as a getback to a conference call. They are questioning the mileage of (b) (7)(E) now that the

updated map has eliminated the double wall. They have also pointed out that the zone project breakdown ends at (b) (7)(E) and the map clearly show proposed wall into (b) (7)(E).

Can we update this chart or provide them with an accurate mileage breakout by zone? They are working to justify spending in the bill and need to be able to explain where these projects are located. We need to provide staff a response as soon as possible, **by Noon the latest**.

Thank you,

(b) (6), (b) (7)(C)

From: (b) (6), (b) (7)(C)

Sent: Thursday, April 6, 2017 10:32 AM

To: (b) (6), (b) (7)(C)

(b) (6), (b) (7)(C)

Cc: (b) (6), (b) (7)(C)

(b) (6), (b) (7)(C)

Subject: RE: 'levee map'

Here is a more zoomed in version of that map so hopefully the zones are broken out a bit more clearly for you. Please let me know if you need anything else ☺

(b) (6), (b) (7)(C)

Business Operations

OFAM / BPAM PMO

(b) (6), (b) (7)(C)

(b) (6), (b) (7)(C)

(b) (6), (b) (7)(C)

From: (b) (6), (b) (7)(C)

Sent: Thursday, April 06, 2017 10:19 AM

To: (b) (6), (b) (7)(C)

(b) (6), (b) (7)(C)

Cc: (b) (6), (b) (7)(C)

(b) (6), (b) (7)(C)

Subject: RE: 'levee map'

Thank you!

(b) (6), (b) (7)(C)

Office of Congressional Affairs

U.S. Customs and Border Protection

(b) (6), (b) (7)(C)

From: (b) (6), (b) (7)(C)

Sent: Thursday, April 6, 2017 9:53 AM

To: (b) (6), (b) (7)(C)

Cc: (b) (6), (b) (7)(C)

Subject: RE: 'levee map'

Updated map attached

(b) (6), (b) (7)(C)

Director, Business Operations Division (Acting)
Border Patrol & Air and Marine Program Management Office
Facilities Management and Engineering
Office of Facilities and Asset Management

(b) (6), (b) (7)(C)

From: (b) (6), (b) (7)(C)

Sent: Thursday, April 06, 2017 9:36 AM

To: (b) (6), (b) (7)(C)

Cc: (b) (6), (b) (7)(C)

Subject: RE: 'levee map'

Thank you, (b) (6), (b) (7)(C) and (b) (6), (b) (7)(C)

(b) (6), (b) (7)(C) would you have time now to walk through the zones and segments on the RGV section (pg. 72-82) of the attached maps? I'm at (b) (6), (b) (7)(C).

I'm just looking to be able to say to staff (b) (7)(E) existing pedestrian fence is segments O-X, O-Y-, OZ and that is "levee" because they are confused by the labels of pedestrian existing, proposed barrier and then the labels used in the request.

Thank you,

(b) (6), (b) (7)(C)

From: (b) (6), (b) (7)(C)

Sent: Thursday, April 6, 2017 9:24 AM

To: (b) (6), (b) (7)(C)

(b) (6), (b) (7)(C)
Cc: (b) (6), (b) (7)(C)
Subject: RE: 'levee map'

Hi (b) (6), (b) (7)(C) –

Yes to both of your questions.

We will have an updated map by 10 am and (b) (6), (b) (7)(C), cc'd here, is available to walk you through the map labels as well. Please let us know when you are free and what # she can reach you at.

(b) (6), (b) (7)(C)
Director, Business Operations Division (Acting)
Border Patrol & Air and Marine Program Management Office
Facilities Management and Engineering
Office of Facilities and Asset Management
(b) (6), (b) (7)(C)

From: (b) (6), (b) (7)(C)
Sent: Thursday, April 06, 2017 8:50 AM
To: (b) (6), (b) (7)(C)
Cc: (b) (6), (b) (7)(C)
Subject: RE: 'levee map'
Importance: High

Good Morning All,

Staff has indicated they need to provide their leadership with a response on the appearance of the two parallel levee fences in (b) (7)(E) by **this morning at 10 am**. Have you made any progress with USBP or do we need to elevate this with their leadership this morning?

Additional the staff is very confused regarding the difference between the segment labels and the zones. Can we walk through the various segments of existing and planned fencing in RGV shown in the attached maps this morning so that we can try and provide some clarity on that front and hopefully avoid a fire drill phone request from the staff?

Thank you,

(b) (6), (b) (7)(C)

(b) (6), (b) (7)(C)
Office of Congressional Affairs
U.S. Customs and Border Protection

(b) (6), (b) (7)(C)

From: (b) (6), (b) (7)(C)

Sent: Tuesday, April 4, 2017 2:09 PM

To: (b) (6), (b) (7)(C)

Cc: (b) (6), (b) (7)(C)

Subject: RE: 'levee map'

Ok thanks, that's helpful to know that it isn't just an issue with the map.

Thanks,

(b) (6), (b) (7)(C)

(b) (6), (b) (7)(C)

Office of Congressional Affairs

U.S. Customs and Border Protection

(b) (6), (b) (7)(C)

From: (b) (6), (b) (7)(C)

Sent: Tuesday, April 4, 2017 1:58 PM

To: (b) (6), (b) (7)(C)

Cc: (b) (6), (b) (7)(C)

Subject: RE: 'levee map'

I will defer to (b) (6), (b) (7)(C) on what was shared beforehand.

It is not a software issue – we are working through the potential 2nd wall with USBP and as soon as we have it resolved, we will be sure to pass it along.

(b) (6), (b) (7)(C)

Director, Business Operations Division (Acting)

Border Patrol & Air and Marine Program Management Office

Facilities Management and Engineering

Office of Facilities and Asset Management

(b) (6), (b) (7)(C)

From: (b) (6), (b) (7)(C) .

Sent: Tuesday, April 04, 2017 1:45 PM

To: (b) (6), (b) (7)(C)

Cc: (b) (6), (b) (7)(C)

Subject: RE: 'levee map'

Hi (b) (6), (b) (7)(C)

Just to confirm, there have not been any updates made to this map since we last shared with staff, correct?

Do we know if the issue with double is just in the mapping software or is there potentially a 2nd wall? I can explain to staff that we are working to correct the issue with the map but in the meantime ask that they ignore the "double wall" if we've confirmed that the issue is with the map and a double wall does not exist in the field.

Thank you,

(b) (6), (b) (7)(C)

From: (b) (6), (b) (7)(C)

Sent: Tuesday, April 4, 2017 1:37 PM

To: (b) (6), (b) (7)(C)

Cc: (b) (6), (b) (7)(C)

Subject: RE: 'levee map'

Hi (b) (6), (b) (7)(C) – Attached is the map. Please note that we are still addressing the area in (b) (7)(E) that shows 2 levees and 2 walls. We are working with USBP to resolve this.

(b) (6), (b) (7)(C)

Director, Business Operations Division (Acting)
Border Patrol & Air and Marine Program Management Office
Facilities Management and Engineering
Office of Facilities and Asset Management

(b) (6), (b) (7)(C)

From: (b) (6), (b) (7)(C)

Sent: Tuesday, April 04, 2017 10:59 AM

To: (b) (6), (b) (7)(C)

Cc: (b) (6), (b) (7)(C)

>

Subject: RE: 'levee map'

Good Morning,

Thank you again for the assistance with the levee wall photos. Are we still tracking to have an updated map to share with the staff this morning?

Thanks again,

(b) (6), (b) (7)(C)

(b) (6), (b) (7)(C)

Office of Congressional Affairs
U.S. Customs and Border Protection

(b) (6), (b) (7)(C)

From: (b) (6), (b) (7)(C)

Sent: Monday, April 3, 2017 6:42 PM

To: (b) (6), (b) (7)(C)

(b) (6), (b) (7)(C)

Cc: (b) (6), (b) (7)(C)

(b) (6), (b) (7)(C)

Subject: RE: 'levee map'

Hi (b) (6), (b) (7)(C) – We are working this. Photos are coming shortly. Maps will be in the am.

(b) (6), (b) (7)(C)

Director, Business Operations Division (Acting)
Border Patrol & Air and Marine Program Management Office
Facilities Management and Engineering
Office of Facilities and Asset Management

(b) (6), (b) (7)(C)

From: (b) (6), (b) (7)(C) .

Sent: Monday, April 03, 2017 5:33 PM

To: (b) (6), (b) (7)(C)

(b) (6), (b) (7)(C) >

Cc: (b) (6), (b) (7)(C)

Subject: RE: 'levee map'

Staff has asked if we will have something to share tonight. Are we still tracking to have the updated map and pictures for them for this evening?

Thanks again,

(b) (6), (b) (7)(C)

From: (b) (6), (b) (7)(C)
Sent: Monday, April 03, 2017 3:14:41 PM
To: (b) (6), (b) (7)(C)
Cc: (b) (6), (b) (7)(C)
Subject: RE: 'levee map'

Stand by. We'll get something.

(b) (6), (b) (7)(C)

From: (b) (6), (b) (7)(C)
Sent: Monday, April 3, 2017 3:14 PM
To: (b) (6), (b) (7)(C)
Cc: (b) (6), (b) (7)(C)
Subject: RE: 'levee map'

Is there an updated map that reflects that?

From: (b) (6), (b) (7)(C)
Sent: Monday, April 03, 2017 3:06:27 PM
To: (b) (6), (b) (7)(C)
Cc: (b) (6), (b) (7)(C)
Subject: RE: 'levee map'

The doubles wall has been removed -

(b) (6), (b) (7)(C)

From: (b) (6), (b) (7)(C)
Sent: Monday, April 03, 2017 2:55 PM
To: (b) (6), (b) (7)(C)
Cc: (b) (6), (b) (7)(C)
Subject: RE: 'levee map'

Thanks (b) (6), (b) (7)(C) We'll send the MR394 map and follow up with USBP.

Appreciate your help,

(b) (6), (b) (7)(C)

From: (b) (6), (b) (7)(C)

Sent: Monday, April 3, 2017 2:45 PM

To: (b) (6), (b) (7)(C)

Cc: (b) (6), (b) (7)(C)

Subject: RE: 'levee map'

(b) (6), (b) (7)(C) – USBP was supposed to answer the double layer requirement question. I would follow up with them. As far as answering (b) (6), (b) (7)(C) question, the second map MR 394 should do it. I would not send the O1_O3 map.

(b) (6), (b) (7)(C)

From: (b) (6), (b) (7)(C)

Sent: Monday, April 3, 2017 2:27 PM

To: (b) (6), (b) (7)(C)

Cc: (b) (6), (b) (7)(C)

Subject: FW: 'levee map'

Removing (b) (6), (b) (7)(C)

(b) (6), (b) (7)(C)

You had recently provided, and we shared with the staff the attached maps with the proposed wall and levee wall. Not looking to add to the workload, I can resend either of these maps to the staff, per this new request.

My one question was did we find out why it looks like a double wall in (b) (7)(E) on both of these maps?

Thanks again,

(b) (6), (b) (7)(C)

(b) (6), (b) (7)(C)

Office of Congressional Affairs

U.S. Customs and Border Protection

(b) (6), (b) (7)(C)

From: (b) (6), (b) (7)(C)

Sent: Monday, April 3, 2017 2:09 PM

To: (b) (6), (b) (7)(C)

Cc: (b) (6), (b) (7)(C)

Subject: 'levee map'

Many thanks for getting on the line today. Do you have any good maps of the current or proposed levee? Apologize if we already have this somewhere. If so, please forward.

From: (b) (6), (b) (7)(C)
To: (b) (6), (b) (7)(C)
Cc: (b) (6), (b) (7)(C)
Subject: RE: Border Fence
Date: Monday, March 20, 2017 4:43:34 PM
Attachments: [image001.png](#)
[RGV_03-20-17.pdf](#)
[Quick \(but easy I hope\) map request.msg](#)
[FW Border Fence .msg](#)

Ok, this is a complicated story.

I'm going to give you all the details here so that you can decide on a course of action and tell us how we can help.

I received two emails with RGV data (both attached):

Email from (b) (6), (b) (7)(C) on Friday with GIS data and a table – the table information is NOT the same as the GIS data.

Email from (b) (6), (b) (7)(C) today with the same GIS, a table, and a map – the table in this email DOES match the GIS data.

So – attached are maps that show the GIS data and the table from the second email (also shown below).

We have no idea on the source of data for table in (b) (6), (b) (7)(C) email. Please don't use that data.

These maps are not for distribution.

They provide a visual of the data for your understanding.

If you want maps that you can send out, please let me know and I will reformat with our FOIA, Legend, Date, tracking info, etc.

Here's what you can see:

Yellow with labels = RGV-proposed alignments highlighted as per the table. The labels are either O-X or Zone X as in the table.

Green = other RGV-proposed fence locations that are not called out

Green polygons = Federal Land (it's all National Wildlife Refuge)

Orange = RGV-proposed secondary fence (you can see on page 3 where they realigned O-3, but did not move the secondary to correlate)

Black lines that look like train tracks = levee (start on page 4)

We have also added the Station names and the Zone numbers (they are kind of hard to see).

As with all our PDFs, the data are divided into layers. You can expand the layer menu on the left side, and use the eye icon to turn things on and off.

For the record:

(b) (7)(E) O-1

(b) (7)(E) O-2

(b) (7)(E) O-3

Their mileages for these segments match ours.

Again – please don't redistribute, these maps would qualify as “embarrassing.”

Zone Breakdown			
Station	Zone	Distance (mi.)	Project
(b) (7)(E)			O-1 thru O-3
TOTAL		(b) (7)(E)	

Project Breakdown	
O-1	(b) (7)(E)
O-2	
O-3	
Total	
Levee Proposed Wall	
Total	(b) (7)(E)

Thanks,

(b) (6)

(b) (6)

From: (b) (6)

Sent: Monday, March 20, 2017 1:03 PM

To: (b) (6), (b) (7)(C)

Cc: (b) (6), (b) (7)(C)

Subject: RE: Border Fence

This data matches what they sent previously, with one exception – they have moved O-1, 2, and 3 BACK to the previously determined alignments.

To recap the O's:

There was the original planned alignments (2008)

Then work with IBWC and Sector couple years ago adjusted those alignments (these are the ones we have been using).

Data from RGV 2 weeks ago proposed alternate alignments, which they confirmed as accurate during a Friday call between GIS teams,

And then the data share they sent Friday evening moved their proposed alignments back to the IBWC/Sector agreed-on alignments.

That may only make sense to me, but there you have it.

We are creating a map of the information provided below so that you can see it, and use it this week.

Thanks,

(b) (6)

(b) (6)

From: (b) (6), (b) (7)(C)

Sent: Friday, March 17, 2017 6:48 PM

To: (b) (6)

Cc: (b) (6), (b) (7)(C)

Subject: FW: Border Fence

Importance: High

(b) (6) – See the attached. Can the Baker team lay this GIS info into a map we can look at of RGV quickly on Monday? It doesn't have to be pretty right away, just viewable.

(b) (6), (b) (7)(C)

(b)(6);(b)(7)(C)

From: (b)(6);(b)(7)(C)
Sent: Monday, March 20, 2017 10:50 AM
To: (b)(6)
Subject: FW: Border Fence
Attachments: O1O3_Levee.pdf; Zone_Project Breakdown.xlsx; O1O3_LeveeWall_shapefiles.zip

From: (b)(6);(b)(7)(C)
Sent: Monday, March 20, 2017 9:29 AM
To: (b)(6);(b)(7)(C)
Subject: FW: Border Fence

(b)(6);(b)(7)(C)

From: (b)(6);(b)(7)(C)
Sent: Monday, March 20, 2017 9:20 AM
To: (b)(6);(b)(7)(C)
(b)(6);(b)(7)(C)
Cc: (b)(6);(b)(7)(C)
Subject: FW: Border Fence

PDF gives a good snapshot of Fridays changes.

(b)(6);(b)(7)(C)

Division Chief
Rio Grande Valley Sector
U.S. Border Patrol

O: (b)(6);(b)(7)(C)
(b)(6);(b)(7)(C)

From: (b)(6);(b)(7)(C)
Sent: Monday, March 20, 2017 8:13 AM
To: (b)(6);(b)(7)(C)
Cc: (b)(6);(b)(7)(C)
Subject: RE: Border Fence

Chief,

We identified (b)(7) miles of wall/fence that lies in conjunction with the existing levee and also includes the old O1-O3 project. The O1, O2 and O3 project totals (b)(7) miles and is the only new wall identified in Zones (b)(7)(E) New proposed

levee wall totals (b) (7)(E) miles in Zone (b) (7)(E). The only Zone identified for double wall is in Zone (b) (7)(E) which is the beginning of the floodway and is on the south levee.

*There are additional fencing requirements in the zones identified, however because they do not run in conjunction with the levee, they were not included.

Zone Breakdown			
Station	Zone	Distance (mi.)	Project
(b) (7)(E)	(b) (7)(E)	(b) (7)(E)	O-1 thru O-3
			Levee Proposed Wall
TOTAL		(b) (7)(E)	

Project Breakdown		
O-1		(b) (7)(E)
O-2		
O-3		
Total		
Levee Proposed Wall		
Total		(b) (7)(E)

v/r

(b)(6);(b)(7)(C) (A) Special Operations Supervisor | RGV Sector Technology, TI and TACCOM
way 281 | Edinburg, TX 78542 | (b)(6);(b)(7)(C) O: (b)(6);(b)(7)(C)

"It is only when we become aware or are reminded that our time is limited that we can channel our energy into truly living"
- Ludovico Einaudi

From: (b)(6);(b)(7)(C))

Sent: Friday, March 17, 2017 8:09 PM

To: (b)(6);(b)(7)(C)

Cc: (b)(6);(b)(7)(C)

Subject: RE: Border Fence

Ok thanks. Let's get that before 0800 on Monday, please.

Thanks for the good, quick work this afternoon, too.

(b)(6);(b)(7)(C)

(b)(6);(b)(7)(C)

From: (b)(6);(b)(7)(C)

Sent: Friday, March 17, 2017 6:11:01 PM

To: (b)(6);(b)(7)(C)

Cc: (b)(6);(b)(7)(C)

Subject: RE: Border Fence

Sir,

(b) (7)(E) has double fencing on the floodway. I don't have the exact measurement but its roughly (b) (7)(E) miles.

(b)(6);(b)(7)(C)

Operations Officer

RGV Sector/Tactical Infrastructure

(b)(6);(b)(7)(C)

From: (b)(6);(b)(7)(C))

Sent: Friday, March 17, 2017 6:03 PM

To: (b)(6);(b)(7)(C)

Cc: (b)(6);(b)(7)(C)

Subject: RE: Border Fence

Did we call for any of the areas of (b) (7)(E) to have double fencing?

(b)(6);(b)(7)(C)

From: (b)(6);(b)(7)(C)

Sent: Friday, March 17, 2017 4:36:02 PM

To: (b)(6);(b)(7)(C)

Cc: (b)(6);(b)(7)(C)

Subject: FW: Border Fence

DCPA (b)(6);(b)(7)(C)

Below and attached is the revised document with levee miles.

Station	Project/zone	Distance	Levee Miles
(b) (7)(E)	O-1 (b) (7)(E)		(b) (7)(E)
	O-2		

(b) (7)(E)	O-3	(b) (7)(E)
(b) (7)(E)		
TOTAL		(b) (7)(E)

Respectfully,

(b)(6);(b)(7)(C)
Operations Officer
RGV Sector/Tactical Infrastructure
(b)(6);(b)(7)(C)

"Become the kind of leader that people would follow voluntarily, even if you had no title or position." --Brian Tracy

From: (b)(6);(b)(7)(C)
Sent: Friday, March 17, 2017 5:30 PM
To: (b)(6);(b)(7)(C)
Cc: (b)(6);(b)(7)(C)
Subject: Border Fence
Importance: High

DCPA (b)(6);(b)(7)(C)

Below and attached are the Fence mileage broken down by zone. Also attached are the shapefiles to go with the tasker.

Station	Project/zone	Distance
(b) (7)(E)	O-1	(b) (7)(E)
	O-2	
	O-3	
		(b) (7)(E)
TOTAL		

Respectfully,

(b)(6);(b)(7)(C)

Operations Officer

RGV Sector/Tactical Infrastructure

(b)(6);(b)(7)(C)

"Become the kind of leader that people would follow voluntarily, even if you had no title or position." --*Brian Tracy*

(b) (7)(E)



(b)(6);(b)(7)(C)

From:

(b)(6);(b)(7)(C)

Sent:

Sunday, March 19, 2017 2:50 PM

To:

Cc:

(b)(6);(b)(7)(C)

Subject:

Quick (but easy i hope?) map request

Attachments:

NON-RESPONSIVE

(b)(6);(b)(7)(C)

For the Hill brief this week on the budget, we need a couple of maps to lay into the slides. That said, they don't need to have any alignment in them. All we need is:

1. A map of RGV sector that shows the station AORs. We'll need one map that highlights the border (like the blue line you did for the BIS a couple of weeks back) in Rio Grande City, McAllen and Weslaco AORs. We'll need a second map that highlights the same, except this time just Rio Grande City AOR. I would use the same map view as you did for the BIS slide you did for me a couple weeks ago on both of these. I've attached it as a reminder. We're going to use it again, so we want to keep the look consistent.
2. We're also going to need another map of another sector much like the one I described here for RGV. Problem is, I won't know which other sector and which stations with in the sector until tomorrow morning. As soon as I know, I'll send a follow up.

If this makes no sense at all because it's Sunday and yikes...well, we can talk in the AM. We have the first pre-brief of what's supposed to be a complete deck at 3PM tomorrow, which means we'll need to lay these slides in by about 130 in order to get them printed and be at RRB in time.

Thanks,

(b)(6);(b)(7)(C)

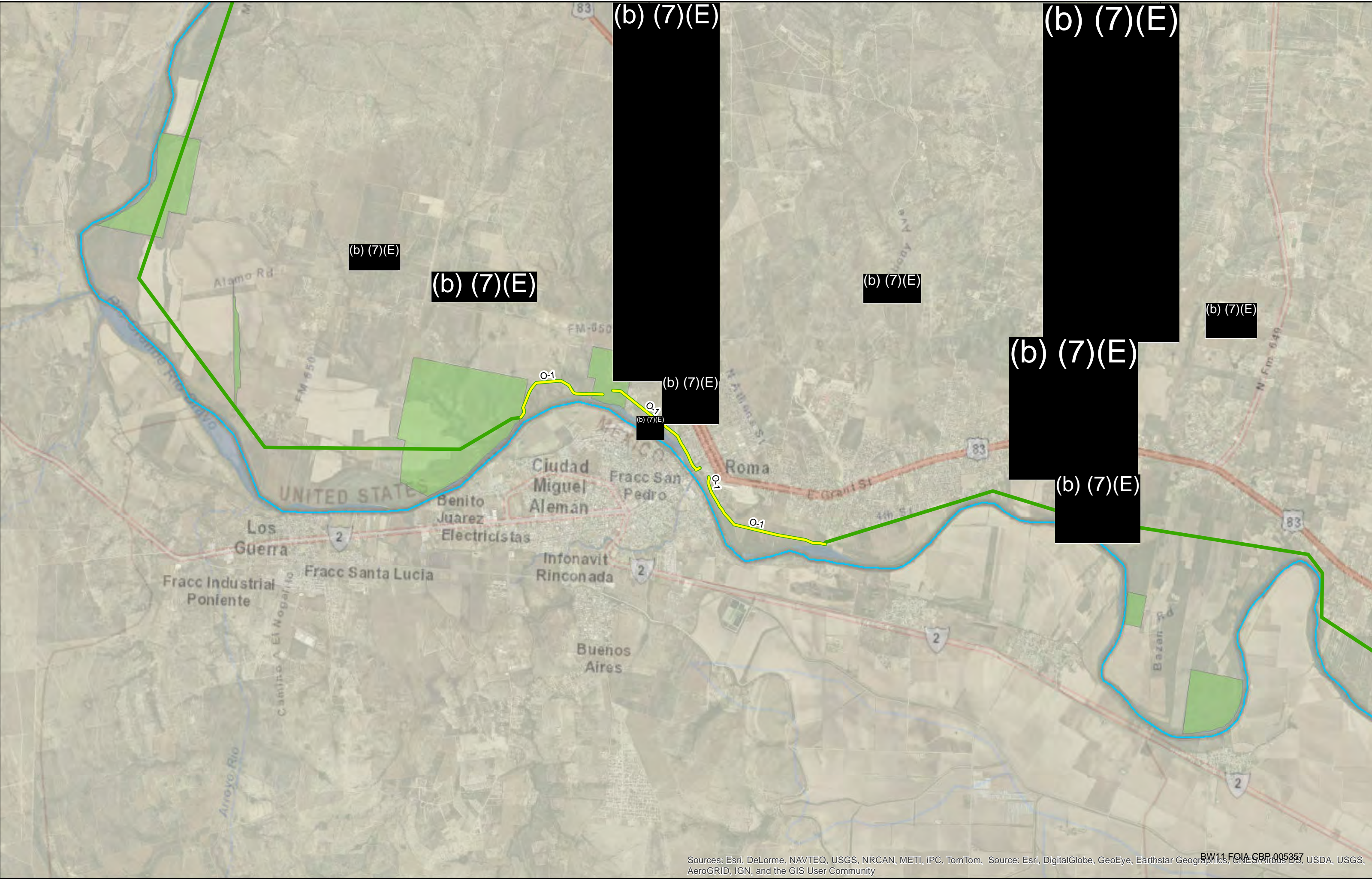
(b)(6);(b)(7)(C)

Chief of Staff

Office of Facilities and Asset Management

Mobile: (b)(6);(b)(7)(C)

(b)(6);(b)(7)(C)



(b) (7)(E)

(b) (7)(E)

(b) (7)(E)

(b) (7)(E)

(b) (7)(E)

(b) (7)(E)

(b) (7)(E)

(b) (7)(E)

(b) (7)(E)

(b) (7)(E)

(b) (7)(E)

(b) (7)(E)

(b) (7)(E)

(b) (7)(E)

(b) (7)(E)

(b) (7)(E)

(b) (7)(E)

(b) (7)(E)

(b) (7)(E)

(b) (7)(E)

(b) (7)(E)

(b) (7)(E)

(b) (7)(E)

Secondary

(b)

From: (b) (6), (b) (7)(C)
To: (b) (6), (b) (7)(C)
Cc: (b) (6), (b) (7)(C)
Subject: RE: "levee map"
Date: Thursday, April 06, 2017 10:08:01 AM

Ladies – Per our discussion, the purple segment in zone 1 and 2 is “O-1” and is roughly (b) (6), (b) (7)(C) miles. The purple segment in (b) (7)(E) is “O-3” and is approximately (b) (6), (b) (7)(C) miles.

I’ll have the slightly more zoomed in map coming your way in just a few (b) (7)(E)

(b) (6), (b) (7)(C)

Business Operations

OFAM / BPAM PMO

(b) (6), (b) (7)(C)

(b) (6), (b) (7)(C)

(b) (6), (b) (7)(C)

From: (b) (6), (b) (7)(C)
Sent: Thursday, April 06, 2017 9:53 AM
To: (b) (6), (b) (7)(C)

Cc: (b) (6), (b) (7)(C)

Subject: RE: 'levee map'

Updated map attached

(b) (6), (b) (7)(C)

Director, Business Operations Division (Acting)
Border Patrol & Air and Marine Program Management Office
Facilities Management and Engineering
Office of Facilities and Asset Management

(b) (6), (b) (7)(C)

From: (b) (6), (b) (7)(C)
Sent: Thursday, April 06, 2017 9:36 AM
To: (b) (6), (b) (7)(C)

Cc: (b) (6), (b) (7)(C)

Subject: RE: 'levee map'

Thank you, (b) (6), (b) (7)(C) and (b) (6), (b) (7)(C)

(b) (6), (b) (7)(C) would you have time now to walk through the zones and segments on the RGV section (pg. 72-82) of the attached maps? I'm at (b) (6), (b) (7)(C).

I'm just looking to be able to say to staff (b) (7)(E) existing pedestrian fence is segments O-X, O-Y-, OZ and that is "flevee" because they are confused by the labels of pedestrian existing, proposed barrier and then the labels used in the request.

Thank you,

(b) (6), (b) (7)(C)

From: (b) (6), (b) (7)(C)

Sent: Thursday, April 6, 2017 9:24 AM

To: (b) (6), (b) (7)(C)

(b) (6), (b) (7)(C)

Cc: (b) (6), (b) (7)(C)

(b) (6), (b) (7)(C)

Subject: RE: 'flevee map'

Hi (b) (6), (b) (7)(C) –

Yes to both of your questions.

We will have an updated map by 10 am and (b) (6), (b) (7)(C), cc'd here, is available to walk you through the map labels as well. Please let us know when you are free and what # she can reach you at.

(b) (6), (b) (7)(C)

Director, Business Operations Division (Acting)
Border Patrol & Air and Marine Program Management Office
Facilities Management and Engineering
Office of Facilities and Asset Management

(b) (6), (b) (7)(C)

From: (b) (6), (b) (7)(C)

Sent: Thursday, April 06, 2017 8:50 AM

To: (b) (6), (b) (7)(C)

(b) (6), (b) (7)(C) >

Cc: (b) (6), (b) (7)(C)

(b) (6), (b) (7)(C) >

Subject: RE: 'flevee map'

Importance: High

Good Morning All,

Staff has indicated they need to provide their leadership with a response on the appearance of the two parallel levee fences in (b) (7)(E) by **this morning at 10 am**. Have you made any progress with USBP or do we need to elevate this with their leadership this morning?

Additional the staff is very confused regarding the difference between the segment labels and the zones. Can we walk through the various segments of existing and planned fencing in RGV shown in the attached maps this morning so that we can try and provide some clarity on that front and hopefully avoid a fire drill phone request from the staff?

Thank you,

(b) (6), (b) (7)(C)

(b) (6), (b) (7)(C)

Office of Congressional Affairs

U.S. Customs and Border Protection

(b) (6), (b) (7)(C)

From: (b) (6), (b) (7)(C)

Sent: Tuesday, April 4, 2017 2:09 PM

To: (b) (6), (b) (7)(C)

(b) (6), (b) (7)(C)

Cc: (b) (6), (b) (7)(C)

(b) (6), (b) (7)(C)

Subject: RE: 'levee map'

Ok thanks, that's helpful to know that it isn't just an issue with the map.

Thanks,

(b) (6), (b) (7)(C)

(b) (6), (b) (7)(C)

Office of Congressional Affairs

U.S. Customs and Border Protection

(b) (6), (b) (7)(C)

From: (b) (6), (b) (7)(C)

Sent: Tuesday, April 4, 2017 1:58 PM

To: (b) (6), (b) (7)(C)

(b) (6), (b) (7)(C) >

Cc: (b) (6), (b) (7)(C)

(b) (6), (b) (7)(C)

Subject: RE: 'levee map'

I will defer to (b) (6), (b) (7) on what was shared beforehand.

It is not a software issue – we are working through the potential 2nd wall with USBP and as soon as we have it resolved, we will be sure to pass it along.

(b) (6), (b) (7)(C)

Director, Business Operations Division (Acting)
Border Patrol & Air and Marine Program Management Office
Facilities Management and Engineering
Office of Facilities and Asset Management

(b) (6), (b) (7)(C)

From: (b) (6), (b) (7)(C)

Sent: Tuesday, April 04, 2017 1:45 PM

To: (b) (6), (b) (7)(C)

>

Cc: (b) (6), (b) (7)(C)

Subject: RE: 'levee map'

Hi (b) (6), (b) (7)(C)

Just to confirm, there have not been any updates made to this map since we last shared with staff, correct?

Do we know if the issue with double is just in the mapping software or is there potentially a 2nd wall? I can explain to staff that we are working to correct the issue with the map but in the meantime ask that they ignore the “double wall” if we’ve confirmed that the issue is with the map and a double wall does not exist in the field.

Thank you,

(b) (6), (b) (7)(C)

From: (b) (6), (b) (7)(C)

Sent: Tuesday, April 4, 2017 1:37 PM

To: (b) (6), (b) (7)(C)

>

Cc: (b) (6), (b) (7)(C)

Subject: RE: 'levee map'

Hi (b) (6), (b) (7)(C) – Attached is the map. Please note that we are still addressing the area in (b) (7)(E) that shows 2 levees and 2 walls. We are working with USBP to resolve this.

(b) (6), (b) (7)(C)

Director, Business Operations Division (Acting)
Border Patrol & Air and Marine Program Management Office
Facilities Management and Engineering
Office of Facilities and Asset Management

(b) (6), (b) (7)(C)

From: (b) (6), (b) (7)(C)

Sent: Tuesday, April 04, 2017 10:59 AM

To: (b) (6), (b) (7)(C)

Cc: (b) (6), (b) (7)(C)

Subject: RE: 'levee map'

Good Morning,

Thank you again for the assistance with the levee wall photos. Are we still tracking to have an updated map to share with the staff this morning?

Thanks again,

(b) (6), (b) (7)(C)

(b) (6), (b) (7)(C)

Office of Congressional Affairs
U.S. Customs and Border Protection

(b) (6), (b) (7)(C)

From: (b) (6), (b) (7)(C)

Sent: Monday, April 3, 2017 6:42 PM

To: (b) (6), (b) (7)(C)

Cc: (b) (6), (b) (7)(C)

Subject: RE: 'levee map'

HI (b) (6), (b) (7)(C) – We are working this. Photos are coming shortly. Maps will be in the am.

(b) (6), (b) (7)(C)

Director, Business Operations Division (Acting)

Border Patrol & Air and Marine Program Management Office
Facilities Management and Engineering
Office of Facilities and Asset Management
(b) (6), (b) (7)(C)

From: (b) (6), (b) (7)(C)

Sent: Monday, April 03, 2017 5:33 PM

To: (b) (6), (b) (7)(C)

(b) (6), (b) (7)(C) >

Cc: (b) (6), (b) (7)(C)

Subject: RE: 'levee map'

Staff has asked if we will have something to share tonight. Are we still tracking to have the updated map and pictures for them for this evening?

Thanks again,

(b) (6), (b) (7)(C)

From: (b) (6), (b) (7)(C)

Sent: Monday, April 03, 2017 3:14:41 PM

To: (b) (6), (b) (7)(C)

Cc: (b) (6), (b) (7)(C)

Subject: RE: 'levee map'

Stand by. We'll get something.

(b) (6), (b) (7)(C)

From: (b) (6), (b) (7)(C)

Sent: Monday, April 3, 2017 3:14 PM

To: (b) (6), (b) (7)(C)

(b) (6), (b) (7)(C)

Cc: (b) (6), (b) (7)(C)

Subject: RE: 'levee map'

Is there an updated map that reflects that?

From: (b) (6), (b) (7)(C)

Sent: Monday, April 03, 2017 3:06:27 PM

To: (b) (6), (b) (7)(C)

Cc: (b) (6), (b) (7)(C)

Subject: RE: 'levee map'

The doubles wall has been removed -

(b) (6), (b) (7)(C)

From: (b) (6), (b) (7)(C) .

Sent: Monday, April 03, 2017 2:55 PM

To: (b) (6), (b) (7)(C)

Cc: (b) (6), (b) (7)(C)

Subject: RE: 'levee map'

Thanks (b) (6), (b) (7)(C) We'll send the MR394 map and follow up with USBP.

Appreciate your help,

(b) (6), (b) (7)(C)

From: (b) (6), (b) (7)(C)

Sent: Monday, April 3, 2017 2:45 PM

To: (b) (6), (b) (7)(C)

Cc: (b) (6), (b) (7)(C)

Subject: RE: 'levee map'

(b) (6), (b) (7)(C) – USBP was supposed to answer the double layer requirement question. I would follow up with them. As far as answering Peter's question, the second map MR 394 should do it. I would not send the O1_O3 map.

(b) (6), (b) (7)(C)

From: (b) (6), (b) (7)(C)

Sent: Monday, April 3, 2017 2:27 PM

To: (b) (6), (b) (7)(C)

Cc: (b) (6), (b) (7)(C)

Subject: FW: 'levee map'

Removing (b) (6), (b) (7)(C)

(b) (6), (b) (7)(C)

You had recently provided, and we shared with the staff the attached maps with the proposed wall and levee wall. Not looking to add to the workload, I can resend either of these maps to the staff, per this new request.

My one question was did we find out why it looks like a double wall in (b) (7)(E) on both of these maps?

Thanks again,

(b) (6), (b) (7)(C)

(b) (6), (b) (7)(C)

Office of Congressional Affairs

U.S. Customs and Border Protection

(b) (6), (b) (7)(C)

From: (b) (6), (b) (7)(C)

Sent: Monday, April 3, 2017 2:09 PM

To: (b) (6), (b) (7)(C)

Cc: (b) (6), (b) (7)(C)

Subject: 'levee map'

Many thanks for getting on the line today. Do you have any good maps of the current or proposed levee? Apologize if we already have this somewhere. If so, please forward.

From: (b) (6), (b) (7)(C)
To: (b) (6), (b) (7)(C)
Cc: (b) (6), (b) (7)(C)
Subject: RE: "flevee map"
Date: Thursday, April 06, 2017 10:18:46 AM

Thank you, (b) (6), (b) (7)(C) This is very helpful to have for our understanding of the locations of existing fence, flevee and the locations of the proposed wall/flevee so that we can attempt to clarify any confusion from the staff.

We very much appreciate everyone's assistance and quick turnaround on this.

Best,

(b) (6), (b) (7)(C)

(b) (6), (b) (7)(C)

Office of Congressional Affairs
U.S. Customs and Border Protection

(b) (6), (b) (7)(C)

From: (b) (6), (b) (7)(C).

Sent: Thursday, April 6, 2017 10:08 AM

To: (b) (6), (b) (7)(C)

(b) (6), (b) (7)(C)

Cc: (b) (6), (b) (7)(C)

(b) (6), (b) (7)(C)

(b) (6), (b) (7)(C)

Subject: RE: 'flevee map'

Ladies – Per our discussion, the purple segment in (b) (7)(E) is "O-1" and is roughly (b) (7)(E) miles. The purple segment in (b) (7)(E) is "O-3" and is approximately (b) (7)(E) miles.

I'll have the slightly more zoomed in map coming your way in just a few (b) (7)(E))

(b) (6), (b) (7)(C)

Business Operations
OFAM / BPAM PMO

(b) (6), (b) (7)(C)

(b) (6), (b) (7)(C)

(b) (6), (b) (7)(C)

From: (b) (6), (b) (7)(C)

Sent: Thursday, April 06, 2017 9:53 AM

To: (b) (6), (b) (7)(C)

Cc: (b) (6), (b) (7)(C)

Subject: RE: 'flevee map'

Updated map attached

(b) (6), (b) (7)(C)

Director, Business Operations Division (Acting)
Border Patrol & Air and Marine Program Management Office
Facilities Management and Engineering
Office of Facilities and Asset Management

(b) (6), (b) (7)(C)

From: (b) (6), (b) (7)(C) .

Sent: Thursday, April 06, 2017 9:36 AM

To: (b) (6), (b) (7)(C)

Cc: (b) (6), (b) (7)(C)

Subject: RE: 'flevee map'

Thank you, (b) (6), (b) (7)(C) and (b) (6), (b) (7)(C)

(b) (6), (b) (7)(C) would you have time now to walk through the zones and segments on the RGV section (pg. 72-82) of the attached maps? I'm at (b) (6), (b) (7)(C)

I'm just looking to be able to say to staff (b) (7)(E) existing pedestrian fence is segments O-X, O-Y-, OZ and that is "flevee" because they are confused by the labels of pedestrian existing, proposed barrier and then the labels used in the request.

Thank you,

(b) (6), (b) (7)(C)

From: (b) (6), (b) (7)(C)

Sent: Thursday, April 6, 2017 9:24 AM

To: (b) (6), (b) (7)(C)

Cc: (b) (6), (b) (7)(C)

Subject: RE: 'flevee map'

Hi (b) (6), (b) (7)(C) –

Yes to both of your questions.

We will have an updated map by 10 am and (b) (6), (b) (7)(C), cc'd here, is available to walk you through the map labels as well. Please let us know when you are free and what # she can reach you at.

(b) (6), (b) (7)(C)

Director, Business Operations Division (Acting)
Border Patrol & Air and Marine Program Management Office
Facilities Management and Engineering
Office of Facilities and Asset Management

(b) (6), (b) (7)(C)

From: (b) (6), (b) (7)(C)

Sent: Thursday, April 06, 2017 8:50 AM

To: (b) (6), (b) (7)(C)

Cc: (b) (6), (b) (7)(C)

Subject: RE: 'levee map'

Importance: High

Good Morning All,

Staff has indicated they need to provide their leadership with a response on the appearance of the two parallel levee fences in (b) (7)(E) by **this morning at 10 am**. Have you made any progress with USBP or do we need to elevate this with their leadership this morning?

Additional the staff is very confused regarding the difference between the segment labels and the zones. Can we walk through the various segments of existing and planned fencing in RGV shown in the attached maps this morning so that we can try and provide some clarity on that front and hopefully avoid a fire drill phone request from the staff?

Thank you,

(b) (6), (b) (7)(C)

(b) (6), (b) (7)(C)

Office of Congressional Affairs
U.S. Customs and Border Protection

(b) (6), (b) (7)(C)

From: (b) (6), (b) (7)(C).

Sent: Tuesday, April 4, 2017 2:09 PM

To: (b) (6), (b) (7)(C)

Cc: (b) (6), (b) (7)(C)

Subject: RE: 'flevee map'

Ok thanks, that's helpful to know that it isn't just an issue with the map.

Thanks,

(b) (6), (b) (7)(C)

(b) (6), (b) (7)(C)

Office of Congressional Affairs

U.S. Customs and Border Protection

(b) (6), (b) (7)(C)

From: (b) (6), (b) (7)(C)

Sent: Tuesday, April 4, 2017 1:58 PM

To: (b) (6), (b) (7)(C)

Cc: (b) (6), (b) (7)(C)

Subject: RE: 'flevee map'

I will defer to (b) (6), (b) (7)(C) on what was shared beforehand.

It is not a software issue – we are working through the potential 2nd wall with USBP and as soon as we have it resolved, we will be sure to pass it along.

(b) (6), (b) (7)(C)

Director, Business Operations Division (Acting)

Border Patrol & Air and Marine Program Management Office

Facilities Management and Engineering

Office of Facilities and Asset Management

(b) (6), (b) (7)(C)

From: (b) (6), (b) (7)(C)

Sent: Tuesday, April 04, 2017 1:45 PM

To: (b) (6), (b) (7)(C)

Cc: (b) (6), (b) (7)(C)

Subject: RE: 'levee map'

Hi (b) (6), (b) (7)(C)

Just to confirm, there have not been any updates made to this map since we last shared with staff, correct?

Do we know if the issue with double is just in the mapping software or is there potentially a 2nd wall? I can explain to staff that we are working to correct the issue with the map but in the meantime ask that they ignore the "double wall" if we've confirmed that the issue is with the map and a double wall does not exist in the field.

Thank you,

(b) (6), (b) (7)(C)

From: (b) (6), (b) (7)(C)

Sent: Tuesday, April 4, 2017 1:37 PM

To: (b) (6), (b) (7)(C)

(b) (6), (b) (7)(C) >

Cc: (b) (6), (b) (7)(C)

(b) (6), (b) (7)(C) >

Subject: RE: 'levee map'

Hi (b) (6), (b) (7)(C) – Attached is the map. Please note that we are still addressing the area in (b) (7)(E) that shows 2 levees and 2 walls. We are working with USBP to resolve this.

(b) (6), (b) (7)(C)

Director, Business Operations Division (Acting)
Border Patrol & Air and Marine Program Management Office
Facilities Management and Engineering
Office of Facilities and Asset Management

(b) (6), (b) (7)(C)

From: (b) (6), (b) (7)(C)

Sent: Tuesday, April 04, 2017 10:59 AM

To: (b) (6), (b) (7)(C)

(b) (6), (b) (7)(C) >

Cc: (b) (6), (b) (7)(C)

(b) (6), (b) (7)(C) >

Subject: RE: 'levee map'

Good Morning,

Thank you again for the assistance with the levee wall photos. Are we still tracking to have an

updated map to share with the staff this morning?

Thanks again,

(b) (6), (b) (7)(C)

(b) (6), (b) (7)(C)

Office of Congressional Affairs

U.S. Customs and Border Protection

(b) (6), (b) (7)(C)

From: (b) (6), (b) (7)(C)

Sent: Monday, April 3, 2017 6:42 PM

To: (b) (6), (b) (7)(C)

(b) (6), (b) (7)(C)

Cc: (b) (6), (b) (7)(C)

(b) (6), (b) (7)(C) >

Subject: RE: 'flevee map'

HI (b) (6), (b) (7)(C) – We are working this. Photos are coming shortly. Maps will be in the am.

(b) (6), (b) (7)(C)

Director, Business Operations Division (Acting)

Border Patrol & Air and Marine Program Management Office

Facilities Management and Engineering

Office of Facilities and Asset Management

(b) (6), (b) (7)(C)

From: (b) (6), (b) (7)(C)

Sent: Monday, April 03, 2017 5:33 PM

To: (b) (6), (b) (7)(C)

(b) (6), (b) (7)(C)

Cc: (b) (6), (b) (7)(C)

Subject: RE: 'flevee map'

Staff has asked if we will have something to share tonight. Are we still tracking to have the updated map and pictures for them for this evening?

Thanks again,

(b) (6), (b) (7)(C)

From: (b) (6), (b) (7)(C)

Sent: Monday, April 03, 2017 3:14:41 PM

To: (b) (6), (b) (7)(C)

Cc: (b) (6), (b) (7)(C)

Subject: RE: 'levee map'

Stand by. We'll get something.

(b) (6), (b) (7)(C)

From: (b) (6), (b) (7)(C)

Sent: Monday, April 3, 2017 3:14 PM

To: (b) (6), (b) (7)(C)

Cc: (b) (6), (b) (7)(C)

Subject: RE: 'levee map'

Is there an updated map that reflects that?

From: (b) (6), (b) (7)(C)

Sent: Monday, April 03, 2017 3:06:27 PM

To: (b) (6), (b) (7)(C)

Cc: (b) (6), (b) (7)(C)

Subject: RE: 'levee map'

The doubles wall has been removed -

(b) (6), (b) (7)(C)

From: (b) (6), (b) (7)(C)

Sent: Monday, April 03, 2017 2:55 PM

To: (b) (6), (b) (7)(C) >

Cc: (b) (6), (b) (7)(C)

Subject: RE: 'levee map'

Thanks (b) (6), (b) (7)(C) We'll send the MR394 map and follow up with USBP.

Appreciate your help,

(b) (6), (b) (7)(C)

From: (b) (6), (b) (7)(C)

Sent: Monday, April 3, 2017 2:45 PM

To: (b) (6), (b) (7)(C)

Cc: (b) (6), (b) (7)(C)

>

Subject: RE: 'levee map'

(b) (6), (b) (7)(C) – USBP was supposed to answer the double layer requirement question. I would follow up with them. As far as answering (b) (6), (b) (7)(C) question, the second map MR 394 should do it. I would not send the O1_O3 map.

(b) (6), (b) (7)(C)

From: (b) (6), (b) (7)(C)

Sent: Monday, April 3, 2017 2:27 PM

To: (b) (6), (b) (7)(C)

Cc: (b) (6), (b) (7)(C)

Subject: FW: 'levee map'

Removing (b) (6), (b) (7)(C)

(b) (6), (b) (7)(C)

You had recently provided, and we shared with the staff the attached maps with the proposed wall and levee wall. Not looking to add to the workload, I can resend either of these maps to the staff, per this new request.

My one question was did we find out why it looks like a double wall in (b) (7)(E) on both of these maps?

Thanks again,

(b) (6), (b) (7)(C)

(b) (6), (b) (7)(C)

Office of Congressional Affairs

U.S. Customs and Border Protection

(b) (6), (b) (7)(C)

From: (b) (6), (b) (7)(C)

Sent: Monday, April 3, 2017 2:09 PM

To: (b) (6), (b) (7)(C)

Cc: (b) (6), (b) (7)(C)

Subject: 'levee map'

Many thanks for getting on the line today. Do you have any good maps of the current or proposed levee? Apologize if we already have this somewhere. If so, please forward.