

Figure 3-2: Critical Habitat for the Sonoran Chub and Mexican Spotted Owl (Tucson and Nogales Stations)

The cactus ferruginous pygmy-owl previously had critical habitat (730,00 acres) designated in 1999 (64 FR 37419); however, a US District Court ruling in 2001 removed the critical habitat designation for the cactus ferruginous pygmy-owl (Center for Biological Diversity [CBD] 2001). The ruling was the result of a lawsuit filed by the Southern Arizona Homebuilders Association, the National Association of Homebuilders, and the Homebuilders Association of Southern Arizona in 2000 (CBD 2001). On November 27, 2002, the USFWS proposed designating 1.2 million acres of critical habitat for the cactus ferruginous pygmy-owl (67 FR 71031). The proposed critical habitat encompasses portions of Pima County (Figure 3-3) within the Tucson Station's AO.

The USFWS designated seven areas (units) as critical habitat for the Huachuca water umbel in Arizona on July 12, 1999 (64 FR 37441). All seven units are located within the Sonoita and Naco stations' AOs in Santa Cruz and Cochise counties (Figures 3-4 and 3-5). These areas are defined as follows: (1) approximately 1.25 miles of Sonoita Creek southwest of Sonoita; (2) approximately 2.7 miles of the Santa Cruz River on both sides of Forest Road 61, plus approximately 1.9 miles of an unnamed tributary to the east of the river; (3) approximately 3.4 miles of Scotia Canyon upstream from near Forest Road 48; (4) approximately 0.7 miles of Sunnyside Canyon near Forest Road 117 in the Huachuca Mountains; (5) approximately 3.8 miles of Garden Canyon near its confluence with Sawmill Canyon; (6) approximately 1.0 mile of Lone Mountain Canyon, approximately 1.0 mile of Rattlesnake Canyon, 0.6 mile of an unnamed canyon, approximately 1.0 mile of Bear Canyon, and an approximately 0.6 mile reach of an unnamed tributary to Bear Canyon; and (7) approximately 33.7 miles of the San Pedro River from the perennial flows reach north of Fairbank to 0.13 miles south of Hereford, SPRNCA. These areas include stream courses and adjacent areas out to the beginning of upland vegetation.

Seven areas were designated as critical habitat for the Gila chub in the study area (50 C.F.R. Part 17). These areas are located in the Lower San Pedro River area and the Lower Santa Cruz River area (Figure 3-6). The critical habitat for Gila chub is defined as Bass Canyon 3.4 miles along the creek from Hot Springs Canyon to Pine Canyon; Hot Springs Canyon along 0.69 mile of creek from below the Bass Canyon confluence to the end of perennial flow; Redfield Canyon 2.2 miles along the creek from Township 11 South, Range 20 East, Section 31 Southeast to the confluence with Sycamore Canyon; Cienega Creek along 19 miles extending from the confluence with Pantano Wash to Township 19 South, Range 17 East, Section 23

THIS PAGE LEFT INTENTIONALLY BLANK

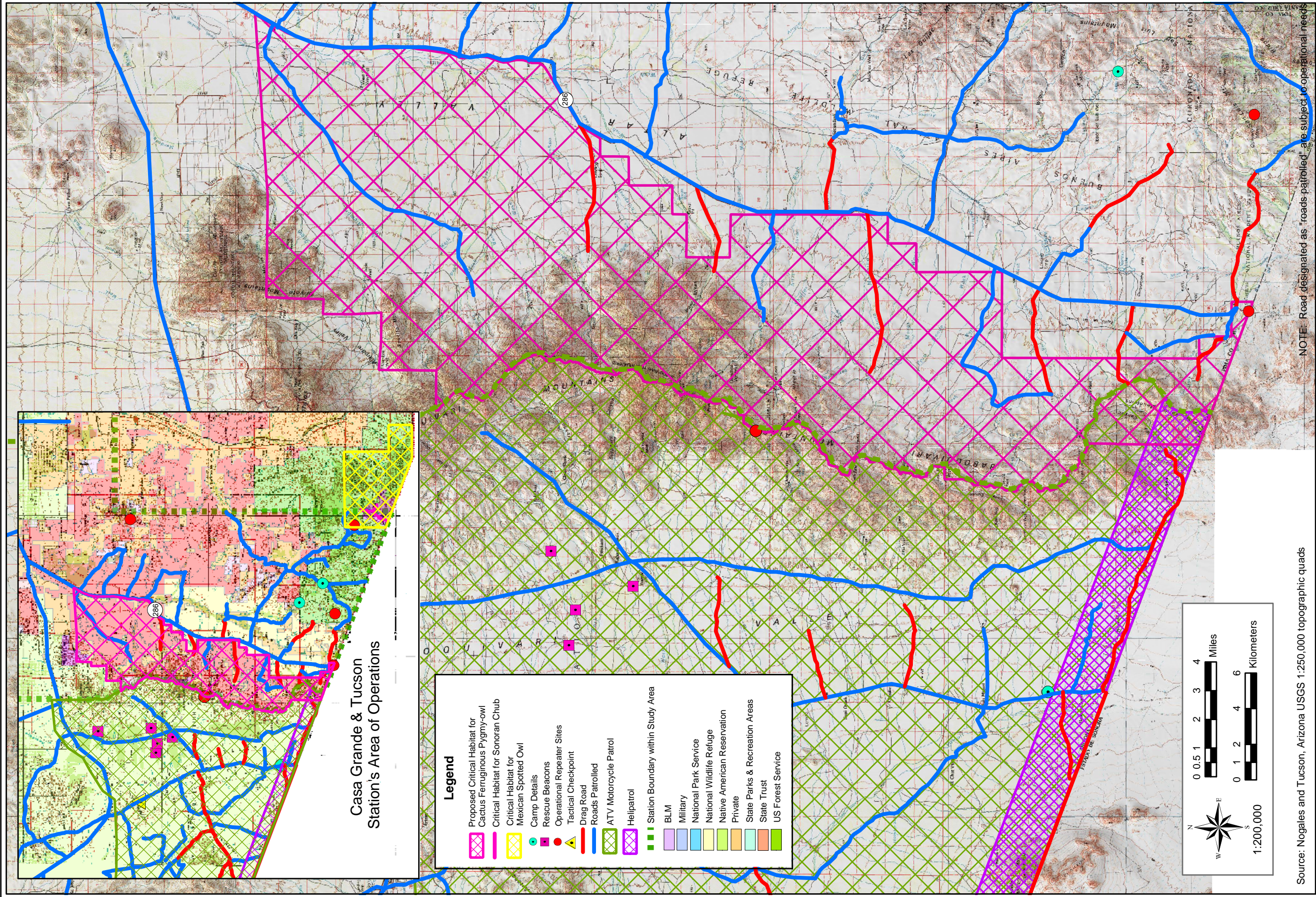


Figure 3-3: Proposed Critical Habitat for Cactus Ferruginous Pygmy-owl (Casa Grande and Tucson Station)