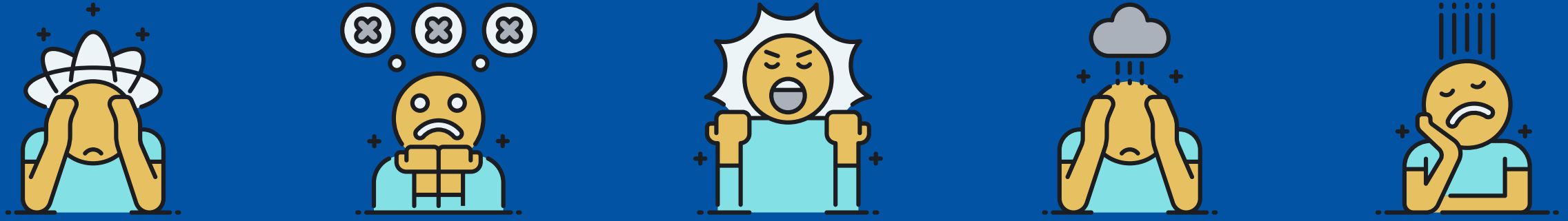


# ¿Mo ko a wich'b'eenta la kok'al naq xat k'ulunk sa' li xteepal Estados Unidos?

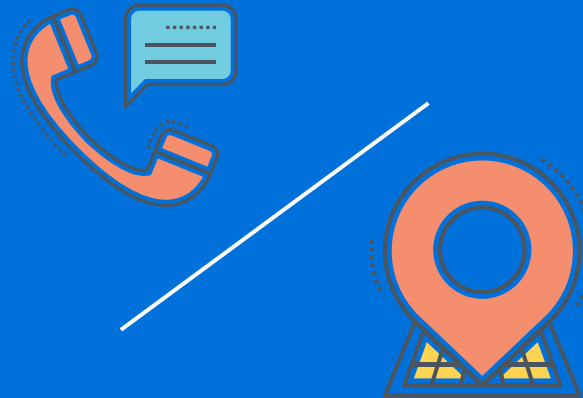


¿Mare Laa'at maraj la kok'al yookex chi reek'ankil li xuwaak, josq'il rahil ch'olejil maraj cha'a'aj li wark choq e re chalen naq xexch'utlaa wichik?



Laa'at ut la junkab'lal wank le k'ulub' xk'ulb'al e tenq'.

Laa'o to ruuq xk'uub'ankil le tenq' sa li aatinob'aal-ch'iich' maraj chixq'atq la ochoch sa' li honal tat truuq.

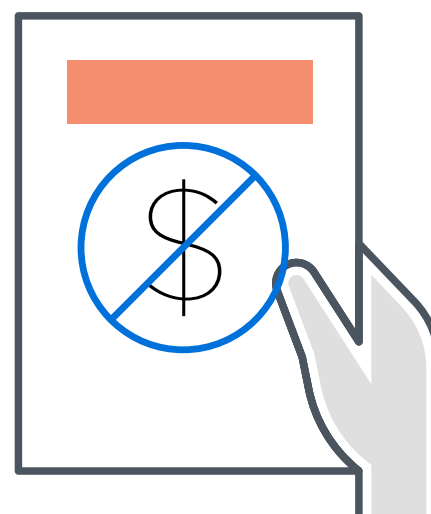


Li tenq' truuq ta wab'i sa' li aatinob'aal ta waj.

Chixjunil li ta yeemanq ma'ani chik nawoq re. Mo ko tyeemanq ta re li ICE ut mo ko li chaqrab'.



Li tenq' ya'siib'il wi ink'a tat truuq xtojb'al.



B'aanu usilal tat b'oqok rik'in Seneca Family of Agencies re ta k'ul li tenq'.

Siib'il b'oqok  
(844) 529-3327  
[info@todopormifamilia.org](mailto:info@todopormifamilia.org)

 **SENECA**  
FAMILY OF AGENCIES | UNCONDITIONAL CARE