



U.S. Customs and  
Border Protection

# CBP Introduction



U.S. Customs and  
Border Protection

# Office of Field Operations

# **U.S. Customs and Border Protection Office of Field Operations**

**Innovation and Resource Optimization  
at the Ports of Entry**



**U.S. Customs and  
Border Protection**

*As of 12/05/13*

# Meeting Objectives

- **Overview of Mission**
- **Discuss current Challenges**
- **Demonstrate CBP innovation efforts**



# Who We Are

## Our Mission

We protect  
the people and economy  
of the United States  
by preventing  
the entry of terrorists and  
instruments of terror  
while expediting  
legitimate travel and  
trade.



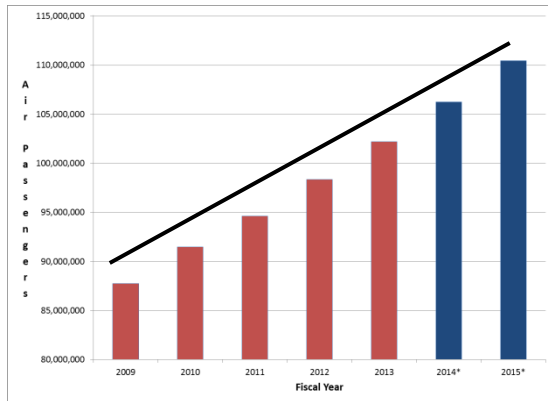
U.S. Customs and  
Border Protection

## In FY 2013, CBP Field Operations . . .

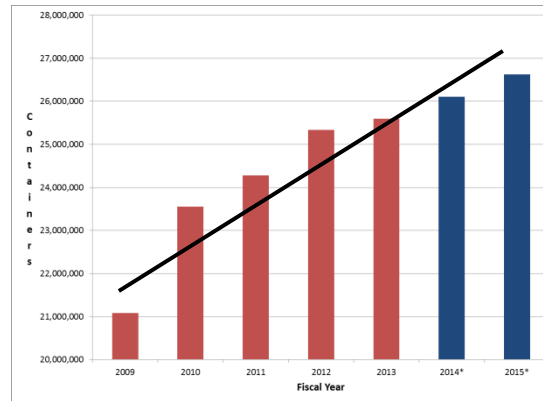
- Inspected over 360 million travelers at 328 distinct Ports of Entry (POE);
- Intercepted over 200,000 inadmissible aliens at POEs;
- Arrested over 24,000 criminals;
- Processed over \$2.3 trillion in goods, collecting over \$41 billion in revenue;
- Confiscated over \$252 million (domestic wholesale value) in goods and \$214 million (domestic wholesale value) in intellectual property rights goods through trade enforcement;
- Kept out over 1.5 million prohibited plant and animal products and prevented over 160,000 agriculture pests from entering the country; and
- Seized almost 750,000 pounds of drugs, over 475,000 rounds of ammunition, and almost \$75 million in currency.

# Current Trends: Volumes Increasing

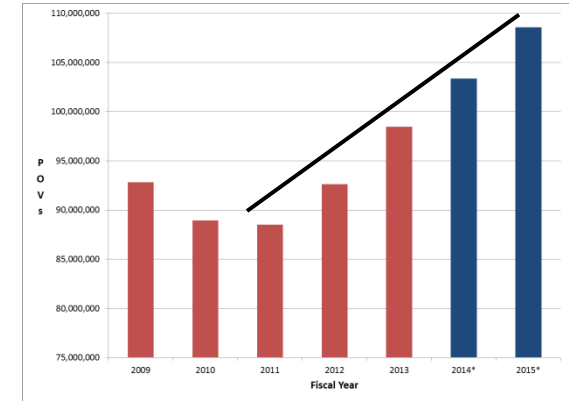
## Air Passengers



## Containers

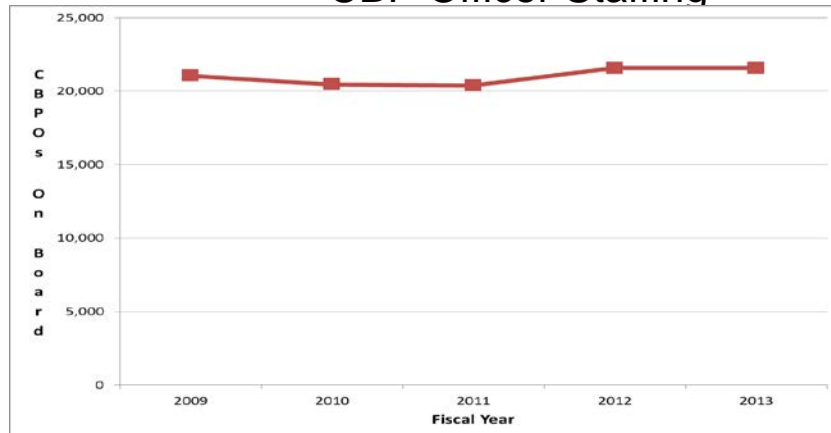


## POVs



## Staffing has remained flat

### CBP Officer Staffing



- Roughly 25 million cargo containers in FY 13, a 20% increase since the FY 09 economic downturn; annual projected growth of 1% - 2%.
- Total air passenger volume is up over 21% compared to FY 09.
- Air travel expected to grow 4% - 5% annually for the next several years.



U.S. Customs and  
Border Protection

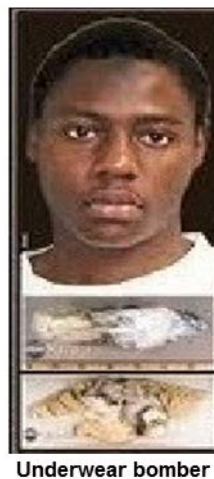
\*Projection

# Challenges We Face

## The Threat Remains ...

While Mission Complexity Increases and External Demands Accelerate

- CBP is constantly refining and enhancing its anti-terrorism operations to combat evolving threats, while enforcing over 400 laws.



- CBP also faces new and expanded facilities and requests for additional services – growth that we must plan and prepare for now.

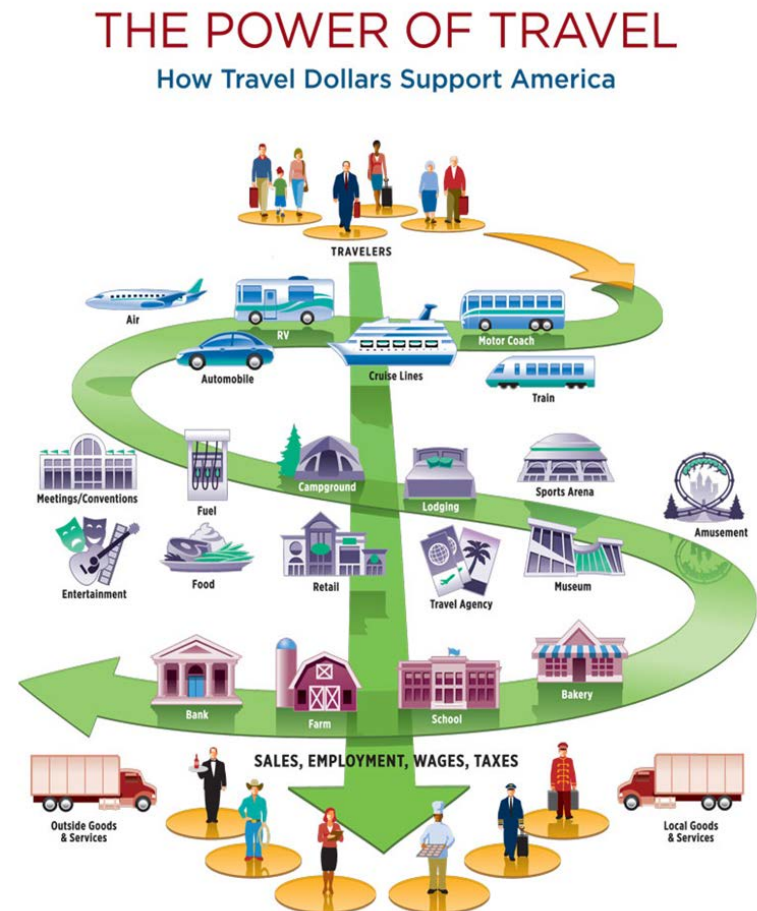


U.S. Customs and  
Border Protection



# Benefit of Increased Travel/Tourism

- The U.S. Travel Association has estimated that each U.S. household would pay \$1,000 more in taxes without the tax revenue generated by travel and tourism.
- International tourists spent \$13.3 billion in the United States in February 2012 alone, up 14 percent from the previous year, and 2011 marked the largest trade surplus for travel and tourism on record for our country – \$43 billion. (Source: TTAB Fact Sheet, July 5, 2012)
- For every 33 overseas travelers one new American job is created (U. S. Travel Association, Travel Means Jobs, 2012)





# Economic Information

## CREATE STUDY SHOWS RETURN ON INVESTMENT

- For each additional CBP officer, the U.S. economy would be improved by:
  - \$2 million increase in Gross Domestic Product
  - \$640,000 reduction in opportunity costs
  - Addition of 33 jobs
- Additional officers also provide for increases in:
  - Drug, currency and intellectual property seizures
  - Trade penalty and liquidated damages assessments
  - Arrests and interceptions of inadmissible passengers

## ECONOMIC IMPACT OF WAIT TIMES

- 45-minute wait times at the San Diego land POEs cause \$1.28 billion in lost business income in the San Diego market area.  
*(Source: San Diego Association of Governments study conducted in 2006)*
- Border wait times at the five busiest southern border POEs result in an average economic output loss of \$116 million per minute of delay.  
*(Source: U.S. Department of Commerce International Trade Administration study conducted in 2008)*
- In 2008, the delays cost the U.S. economy 26,000 jobs and \$6 billion in output.  
*(Source: U.S. Department of Commerce International Trade Administration study conducted in 2008)*



# What's Next For CBP Field Operations

## The Solutions: Resource Optimization Strategy

### **BUSINESS TRANSFORMATION**

- Automate Paper Processes
- Increase use of Mobile Technology
- Expand Trusted Traveler and Trade Programs

### **WORKLOAD STAFFING MODEL**

- Identifies CBPO Staffing Needs
- Rigorous, Data-Driven Model
- Validated, Flexible Approach

### **ALTERNATIVE FUNDING SOURCES**

- Explore funding sources other than appropriations to support additional resources
- Private-Public Partnerships



# Transformation and Partnerships

---

- Implementing a comprehensive and iterative business process review
- Incorporating advanced technologies, streamlining core processes; refining risk segmentation efforts; expanding operational best practices; and improving the travel experience.
- Engaging private industry and universities to partner with us:
  - Provide research and analysis
  - Invest in technology and infrastructure
  - Reimburse for enhanced services



# Our Strategy To Effectively Manage Growth

- Implement Business Transformation Initiatives to Maximize Existing Resources
  - Western Hemisphere Travel Initiative
  - I-94 automation and other paper forms
  - Automated passport kiosks
  - Mobile technology
  - Expand Trusted Traveler Programs
  - New scheduling software
  - Express Connect and One-stop



# Workload Staffing Model

- A decision support tool
- Congressionally mandated
- Helps identify CBP officer staffing levels and needs at ports of entry
- Based on quantifiable data
  - Includes all tasks performed by CBP officers at air, land and sea ports of entry
  - Accounts for holidays, sick days, training, administrative duties



# Funding Strategies

---

- Public – Private Partnerships
  - Limited authority to enter into reimbursable services agreements with private stakeholders for new and future CBP inspectional services.
    - 5 pilot locations
  - Seek authority to accept donations of real and personal property (including monetary donations) and non-personal services from private, State, or local entities for port of entry facilities projects.



# Moving Forward . . .

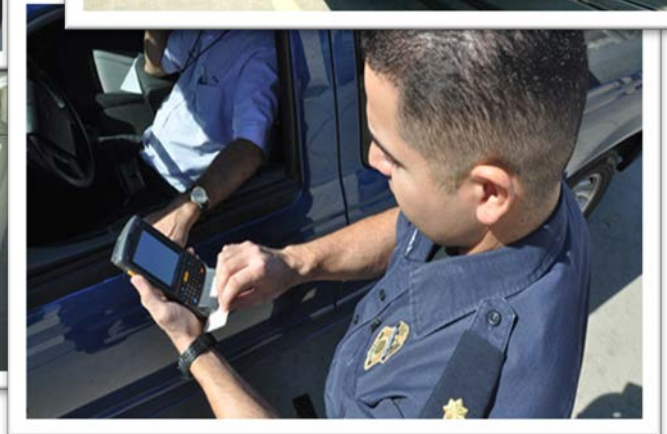
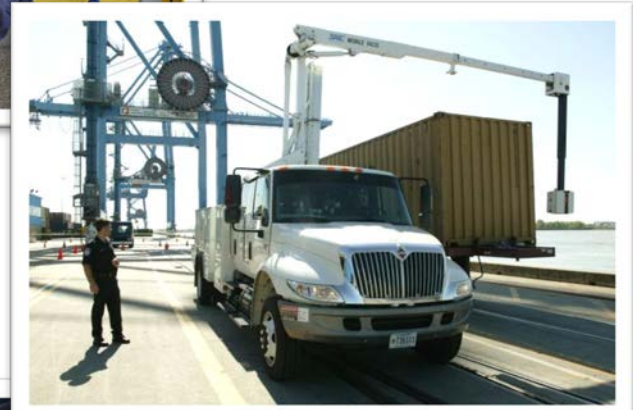
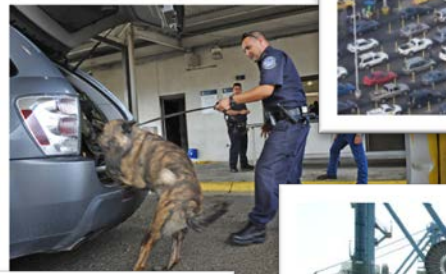
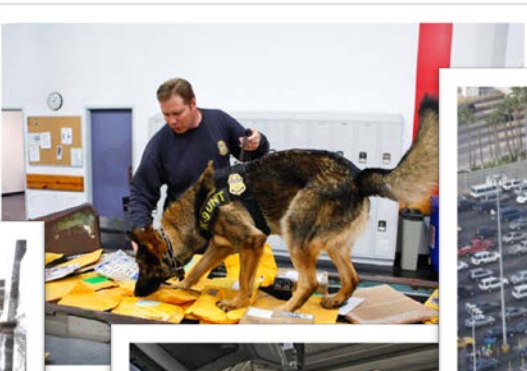
You can expect from us:

- Implementing transformation initiatives
- Regularly communicating and working closely with stakeholders
- Exploring alternative funding sources



**U.S. Customs and  
Border Protection**





U.S. Customs and  
Border Protection



# U.S. Customs and Border Protection



U.S. Customs and  
Border Protection

# Office of Border Patrol



U.S. Customs and  
Border Protection

# Office of Air and Marine





# CBP Office of Air and Marine Technology Overview



December 2013



U.S. Customs and  
Border Protection

Office of Air and Marine

# Office of Air and Marine (OAM)

## ■ Mission Statement

The Office of Air and Marine (OAM) protects the American people and the nation's critical infrastructure through the coordinated use of integrated air and marine forces to detect, interdict and prevent acts of terrorism and the unlawful movement of people, illegal drugs and other contraband toward or across the borders of the United States.



U.S. Customs and  
Border Protection





# U.S. Customs and Border Protection

*Securing the Borders and Preventing Acts of Terrorism*



U.S. Customs and  
Border Protection

**Office of Border Patrol**

A photograph of a U.S. Border Patrol officer in a green uniform, seen from the back, looking through binoculars. A white patrol vehicle with the number "7804" and a "U.S. BORDER PATROL" badge is partially visible.

**Office of Air and Marine**

A photograph of a black helicopter landing on the water, with a small boat nearby.

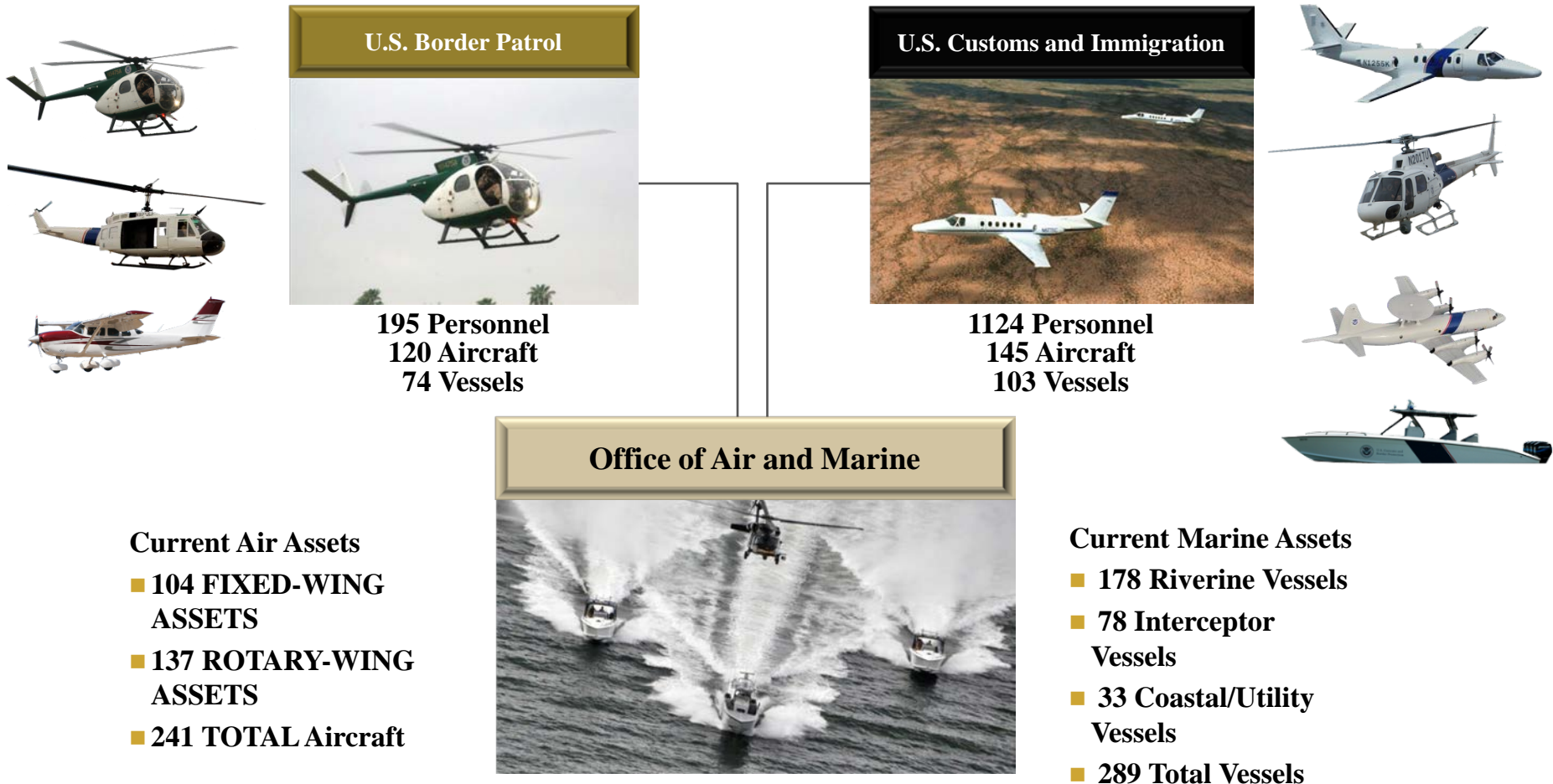
**Office of Field Operations**

A photograph of a U.S. Customs and Border Protection officer in a dark uniform inspecting a person's luggage at a border checkpoint.



# U.S. Customs and Border Protection

## Merger of Two Legacy Air and Marine Programs



U.S. Customs and  
Border Protection



# FY 2013 Performance Results

**73,576 FLIGHT HOURS**



**44,685 UNDERWAY HOURS**



**2,194  
WEAPONS SEIZED**



**63,562  
ALIENS APPREHENDED**



**1,015,076 Lbs.  
MARIJUANA SEIZED**



**155,120 Lbs.  
COCAINE SEIZED**



U.S. Customs and  
Border Protection



# Air and Maritime Operations

## **BORDER SECURITY OPERATIONS**

- Southwest Border Region
- Northern Border Region
- Southeast Border Region
- Air and Marine Operations Center

## **EXTENDED BORDER OPERATIONS**

- National Air Security Operations Centers
- Source and Transit Zones

## **TRAINING**

- National Training Centers

## **INTERIOR OPERATIONS**

- Law Enforcement
- ICE Support
- Support for Events (NSSEs and SEAR)
- Humanitarian Operations (crisis and disaster relief)
- State and Local Support



U.S. Customs and  
Border Protection

Office of Air and Marine



# Law Enforcement / Humanitarian Missions

## OTHER FEDERAL, STATE AND LOCAL LAW ENFORCEMENT

- Investigative Support
- RECOM, CBIG, BEST
- Surveillance
- Tactical Team Insertion
- Boston Bombings
- West Texas Fertilizer Plant Explosion
- FBI Support: Cascade Lake Kidnapping

## SPECIAL EVENTS

- Support U.S. Secret Service NSSEs
- Provide real-time video downlink
- Support POTUS movement
- S1/S2 continuity of government relocation
- Super Bowl
- Airspace security support to DOD
- Air support for tactical air/ground operations

## ICE SUPPORT

- Surveillance, tactical insertion of warrant teams, Title III wiretap surveillance, controlled deliveries of contraband, evidence transport and the transportation of evidence or agents for time critical missions
- FY13 ICE support resulted in the arrest of 381 suspected persons and the seizure of approximately 806,900 pounds of illegal drugs, \$22,820,000 in currency, and 1,890 weapons

## HUMANITARIAN OPERATIONS

- Humanitarian response continues to expand
- FEMA movement for Rapid Needs Assessment Teams
- Long-duration surveillance flights and imagery requests for national disasters
- Situational awareness, critical infrastructure assessment, emergency response

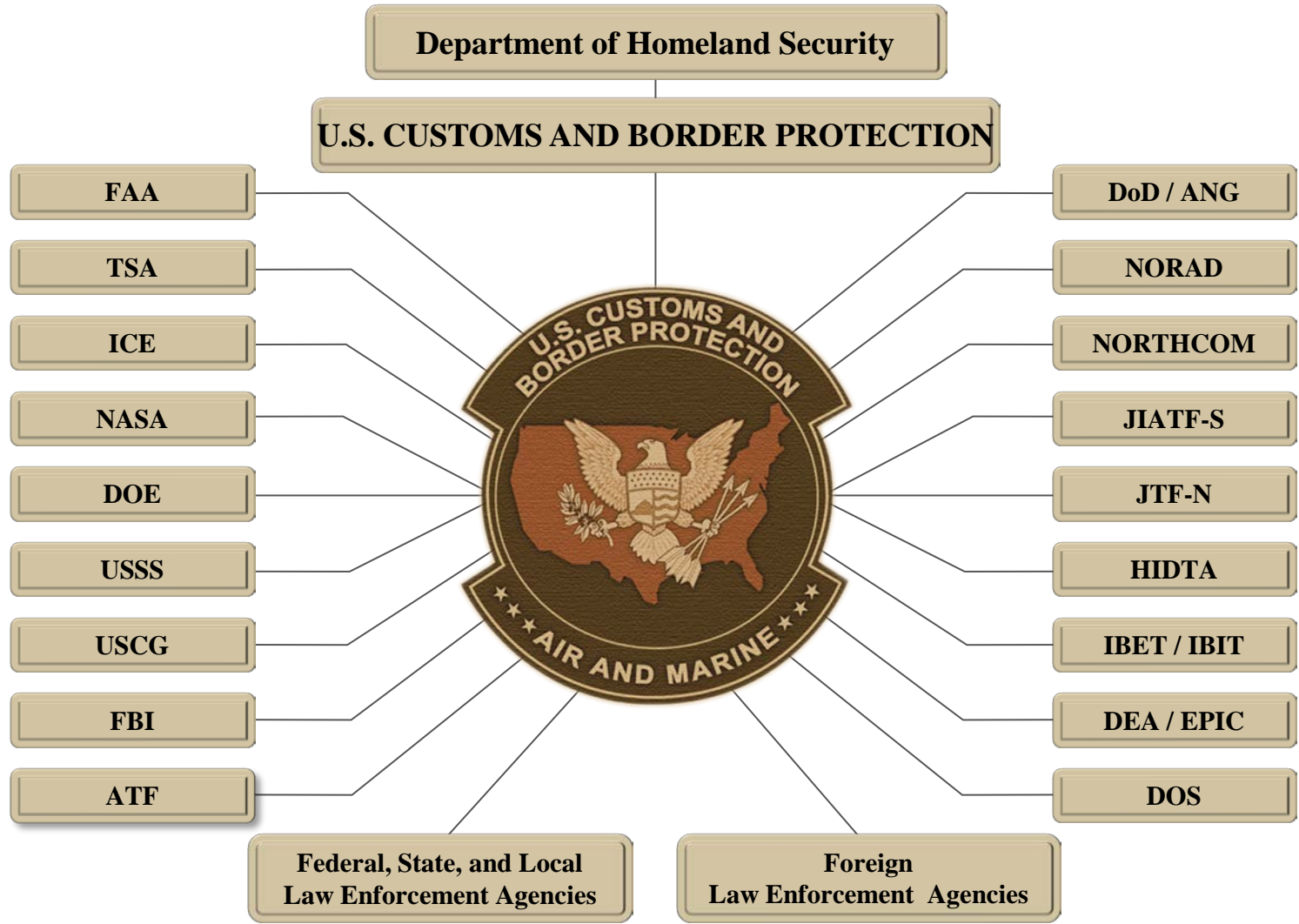


U.S. Customs and  
Border Protection





# OAM Partners



U.S. Customs and  
Border Protection





# America's Homeland Security Frontline

## Domain Awareness: Air, Maritime, Land



U.S. Customs and  
Border Protection



# OAM Air and Marine Operational Locations







# SOUTHWEST BORDER REGION



- 43 FIXED-WING ASSETS
- 86 ROTARY-WING ASSETS
- 129 TOTAL ASSETS

- Air and Marine Operations Center (AMOC)
- Air and Marine Branch
- Air Branch
- Air Unit
- Marine Unit
- ★ Regional Headquarters



U.S. Customs and  
Border Protection



# Southwest Border Region

The border with Mexico includes extremely harsh and inhospitable terrain that represents a significant challenge to border security

- Spans more than 2,000 miles of land

## MISSION

- Illegal immigration and drug trafficking

- Counter-terrorism

## RESULTS (FY13)

- 875,851 Lbs. Marijuana
- 1,337 Lbs. Cocaine
- 62,971 Apprehensions

## PERSONNEL

- 424 LEO, 66 Support

## ASSETS

- 18 air and 4 marine locations
- 133 aircraft and 99 vessels
- 15 riverine units staffed by Office of Border Patrol



U.S. Customs and  
Border Protection





- 19 FIXED-WING ASSETS
- 20 ROTARY-WING ASSETS
- 39 TOTAL ASSETS



U.S. Customs and  
Border Protection



# Northern Border Region

The Northern Border Region is defined as the area between the United States and Canada, running from Washington through Maine, including the Great Lakes Region

- Spans 5,525 miles, the longest border shared by 2 countries

## MISSION

- Illegal immigration and drug trafficking
- Counter-terrorism

## RESULTS (FY13)

- 49,081 Lbs. Marijuana
- 787 Lbs. Cocaine
- 55 Apprehensions

## PERSONNEL

- 236 LEO, 22 Support

## ASSETS

- 9 air and 9 marine locations
- 36 aircraft and 79 marine vessels
- 23 riverine units staffed by Office of Border Patrol



U.S. Customs and  
Border Protection







# SOUTHEAST BORDER REGION

- 14 FIXED-WING ASSETS
- 12 ROTARY-WING ASSETS
- 26 TOTAL ASSETS

- Air and Marine Operations Center (AMOC)
- Air and Marine Branch
- Air Branch
- Air Unit
- Marine Unit
- ★ Regional Headquarters

JACKSONVILLE  
NASOC - JACKSONVILLE  
NATIONAL MARINE CENTER  
NATIONAL MARINE TRAINING CENTER  
FT. PIERCE  
NATIONAL AIR SECURITY UNIT - COCOA BEACH  
WEST PALM BEACH  
FT. LAUDERDALE  
MIAMI  
KEY LARGO  
MARATHON  
KEY WEST  
CARIBBEAN  
CARIBBEAN AIR AND MARINE OPERATIONS CENTER (CAMOC)  
ST. THOMAS  
FAJARDO  
PONCE



U.S. Customs and  
Border Protection



# Southeast Border Region

OAM's presence in the Southeast Border region has been a long-standing deterrent to the alien, drug, and terrorist smuggling threat

- Spans more than 2,000 miles of coastline

## MISSION

- Illegal immigration and drug trafficking
- Counter-terrorism

## RESULTS (FY13)

- 20,247 Lbs. Marijuana
- 39,458 Lbs. Cocaine
- 649 Apprehensions

## PERSONNEL

- 291 LEO
- 40 Support

## ASSETS

- 4 air and 17 marine locations
- 26 aircraft and 59 marine vessels



U.S. Customs and  
Border Protection





U.S. Customs and  
Border Protection





# Extended Border Operations

Contributed to the disruption of \$8.7 Billion in cocaine in FY13

Over 18 lbs. of cocaine interdicted per P-3 flight hour flown

- Support to Mexican law enforcement (IAC)
- Support to Joint Interagency Task Force - South (JIATF-S)
- Operations support Office of National Drug Control Policy (ONDCP)



## RESULTS (FY13)

- 9,332 lbs Marijuana
- 113,515 lbs Cocaine



U.S. Customs and  
Border Protection



# Air and Marine Operations Center (AMOC)

## March Air Reserve Base in Riverside, California

- Established in 1988 as a state-of-the-art law enforcement radar surveillance center designed to counter the ongoing threat of airborne drug smuggling
- Multi-agency domain awareness and law enforcement operations center
- System capacity of 700 sensor feeds from the United States, Canada, and Mexico
- Multiple law enforcement data bases and communications networks
- Detects, sorts, and interdicts suspect air and marine tracks of interest



U.S. Customs and  
Border Protection





# America's Homeland Security Frontline

## Domain Awareness: Technology solutions



U.S. Customs and  
Border Protection



# Technology Evolution

PRE-CBP 2005



OH-6 Primary  
SWB Asset

POST- MERGER



RADAR PLATFORMS



C-550

2011



DHC-8

2005

MEDIUM LIFT HELICOPTERS



UH-60

M-2009



HUEY II

2010

Ground Transport

LAW ENFORCEMENT  
TECHNICAL COLLECTION



2012

COASTAL INTERCEPTOR VESSEL  
RIVERINE PATROL VESSEL



2012



2007



2011

MULTI-ROLE AIRCRAFT  
Maritime Capability Surveillance



2006

UNMANNED AIRCRAFT SYSTEMS  
Advanced Detection Technologies



U.S. Customs and  
Border Protection





# Evolution to Increase Domain Awareness

## Detection Technology

- Sensor Upgrades
- Advanced GMTI
- Law Enforcement Technical Collection
- Software: OSI
- EOIR on more airframes
- Night Vision Capability
- AESA Radar

## Assets

- Fixed-wing: MEA, DHC-8
- Unmanned Aircraft Systems
- Rotor-wing:
  - Increased enforcement helicopter presence: AS-350, EC-120
  - Increased capability: UH-60 L/M, Huey II

## Defense in Depth

- Source/Transit Zone
- P-3 sustainment
- Radar capability

## AMOC

- Partnerships
- Increased capability
- Integration of Mexico and Canadian Radar Feeds
- Maritime Capability

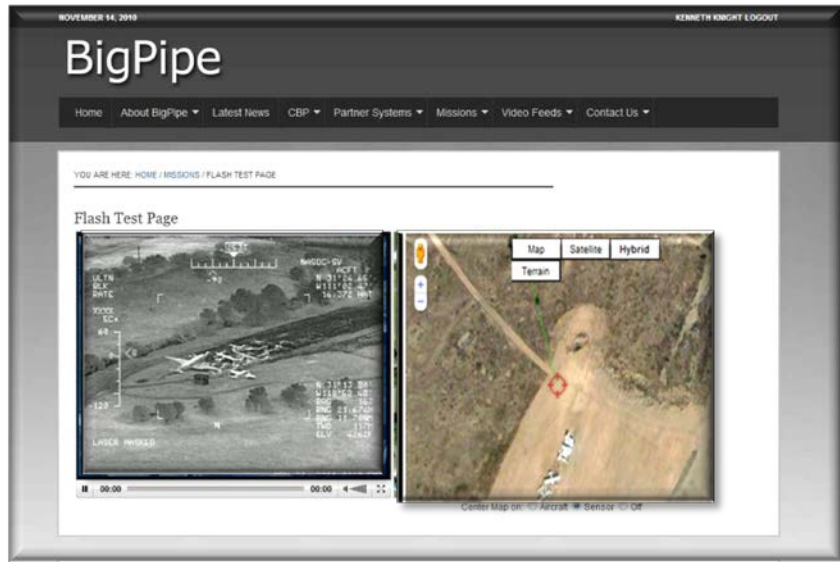


U.S. Customs and  
Border Protection

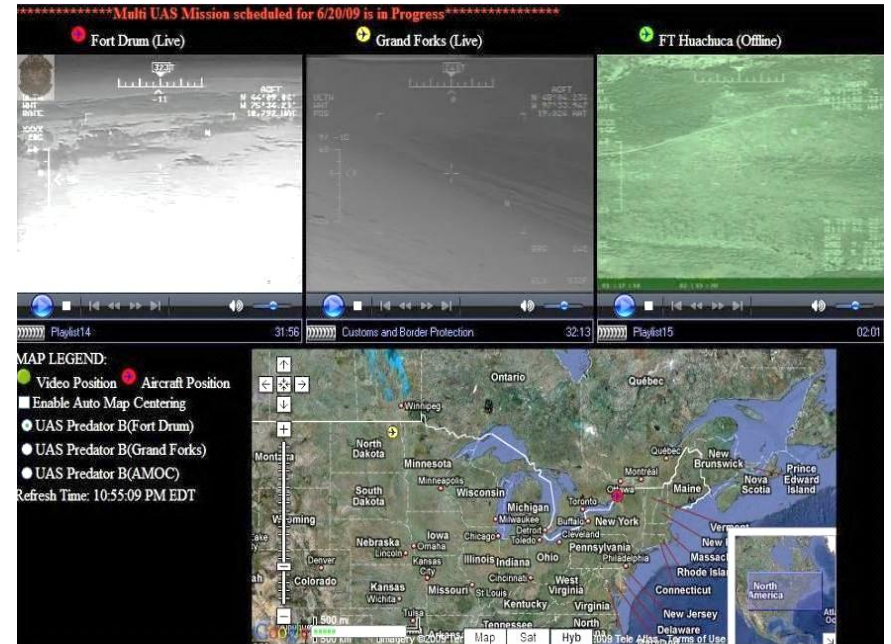




# BigPipe



- Innovative IT program feeds live images across the internet
- Leverage DoD waveform, hand-held devices
- Near real-time EO/IR streaming video, moving map
- Agile feeds to participating users worldwide



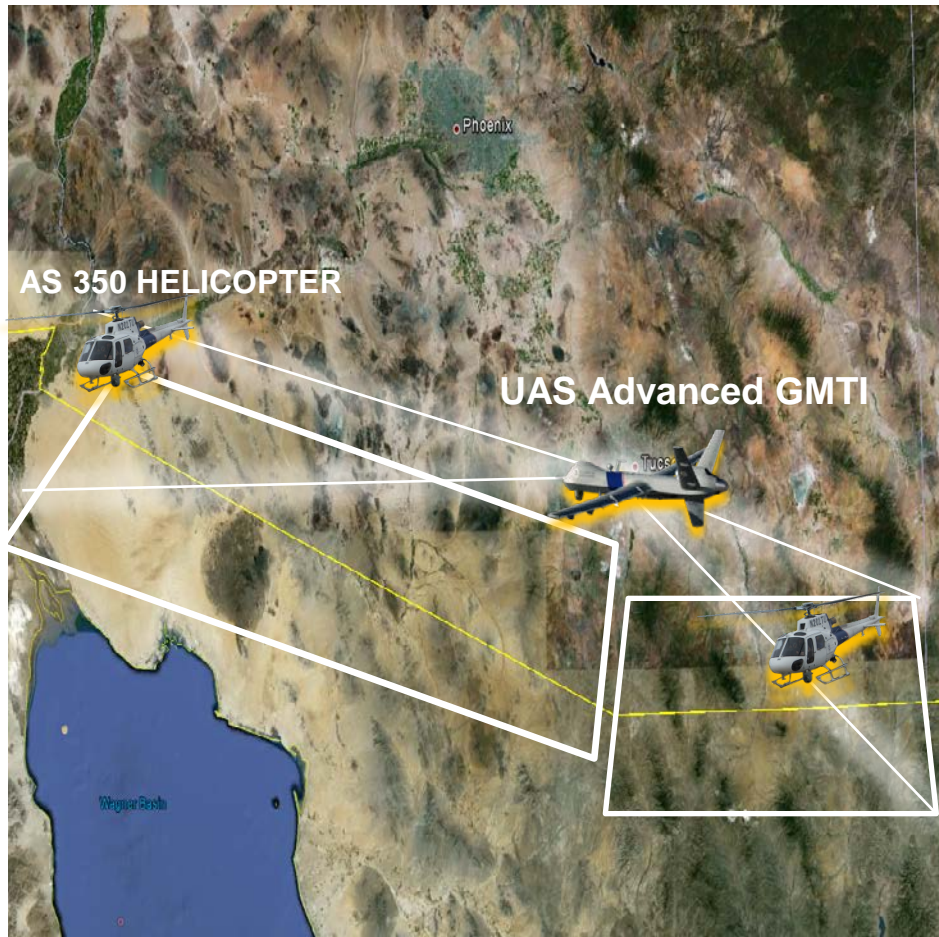
U.S. Customs and  
Border Protection





# The Office of Air and Marine

## Land Domain Awareness



## Maritime Domain Awareness



U.S. Customs and  
Border Protection



# Domain Awareness: Future ?

## Air

- Detection of short landers beyond the border
- Ultralight Air Incursions
- TARS replacement / renewal?

## Maritime

- Persistent surveillance along California Coast to meet threat
- Broad surveillance swath of surface that will allow for advance queuing of maritime assets

## Land

- Surveillance technologies mountable on lightweight air platforms capable of change detection and tracking ground targets

## Interoperability

- Communication and coordination between air, maritime, and land forces
  - Air agents to OBP on ground
  - Air agents to Maritime agents and OBP/ICE on shore



U.S. Customs and  
Border Protection





U.S. Customs and  
Border Protection





U.S. Customs and  
Border Protection

# Office of Intelligence and Investigative Liaison





U.S. Customs and  
Border Protection

# Office of International Trade



**U.S. DEPARTMENT OF HOMELAND SECURITY**

U.S. Customs and Border Protection • Office of Intelligence and Investigative Liaison

# OIIL

“Value Added Intelligence Supporting America’s Frontline”

## **Office of Intelligence and Investigative Liaison (OIIL) and DHS Science & Technology Efforts**



December 2013





# DHS S&T and CBP Projects

- Threat and Anomaly Detection Models – A visualization tool known as Link Discovery Application (LDA), successfully identifies subjects of interest
- Attribution Forensics Intelligence Program – A enhancement of forensics and examination analysis on seized goods smuggled into the U.S.
- Vehicle and Dismount Exploitation Radar – A wide area airborne sensor system that detects moving vehicles and persons illegally entering the U.S. between the ports of entry
- Future Collaboration:
- Space Visualization Initiative – A visualization tool for our deployed sensor technology
- Predictive Analysis Tools – A tool that analyzing patterns and trends of Transnational Criminal Organizations (TCO)



# *Questions*



**U.S. DEPARTMENT OF HOMELAND SECURITY**

**U.S. Customs and Border Protection • Office of Intelligence and Investigative Liaison**

**U.S. Customs and Border Protection  
Office of Intelligence and Investigative Liaison  
1300 Pennsylvania Avenue, NW  
Washington, DC 20229**

**(202) 344 1150  
[www.cbp.gov](http://www.cbp.gov)  
[OIILProductionManagement@cbp.dhs.gov](mailto:OIILProductionManagement@cbp.dhs.gov)**



**"Value-Added Intelligence  
Supporting America's Frontline"**