



***Department of Homeland Security
Freedom of Information Act Monthly Report
November 2014***

Department of Homeland Security

Freedom of Information Act Monthly Report FY 2015

FOIA Requests

Received this month 16,908
 Processed this month 15,074
 Total Received this FY 39,996
 Total Processed this FY 34,055
 Proactive Releases (Pgs) 1,802

Comparison of Numbers of Requests from FY 2014 and Current Monthly Report – Requests Received, and Processed

Component	Number of Requests Received		Number of Requests Processed	
	Received During Fiscal Year from FY 2014 Annual Report	Received During Fiscal Year from Current Monthly Reports	Processed During Fiscal Year from FY 2014 Annual Report	Processed During Fiscal Year from Current Monthly Reports
CBP	47,261	7,202	51,056	5,489
CRCL	80	5	74	7
FEMA	772	125	508	107
FLETC	103	23	99	15
I&A	244	41	255	25
ICE	85,081	6,892	33,644	6,936
NPPD	7,775	1,122	5,581	2,180
OIG	177	47	166	29
OPS	59	15	59	12
PRIV	874	94	666	75
S&T	68	14	68	8
TSA	859	103	491	76
USCG	3,203	502	2,620	275
USCIS	143,794	23,552	141,700	18,721
USSS	1,061	259	1,047	100
AGENCY OVERALL	291,413	39,996	238,034	34,055

Comparison of Backlogged Requests from FY 2014 Annual Report and Current Monthly Reports

Component	Number of Backlogged Requests as of End FY 2014	Number of Backlogged Requests from Current Monthly Reports	Percent Change
CBP	34,307	37,464	INCREASE 9%
CRCL	3	4	INCREASE 33%
FEMA	709	788	INCREASE 11%
FLETC	1	2	INCREASE 100%
I&A	22	17	DECREASE 23%
ICE	56,863	56,968	INCREASE 0%
NPPD	2,245	2,929	INCREASE 30%
OIG	48	64	INCREASE 33%
OPS	0	0	NO CHANGE 0%
PRIV	64	72	INCREASE 13%
S&T	1	4	INCREASE 300%
TSA	924	934	INCREASE 1%
USCG	1261	1,549	INCREASE 23%
USCIS	5,026	10,768	INCREASE 114%
USSS	539	797	INCREASE 48%
AGENCY OVERALL	102,133	112,360	INCREASE 10%

FOIA Appeals

Received this month 241
 Processed this month 220
 Total Received this FY 583
 Total Processed this FY 525

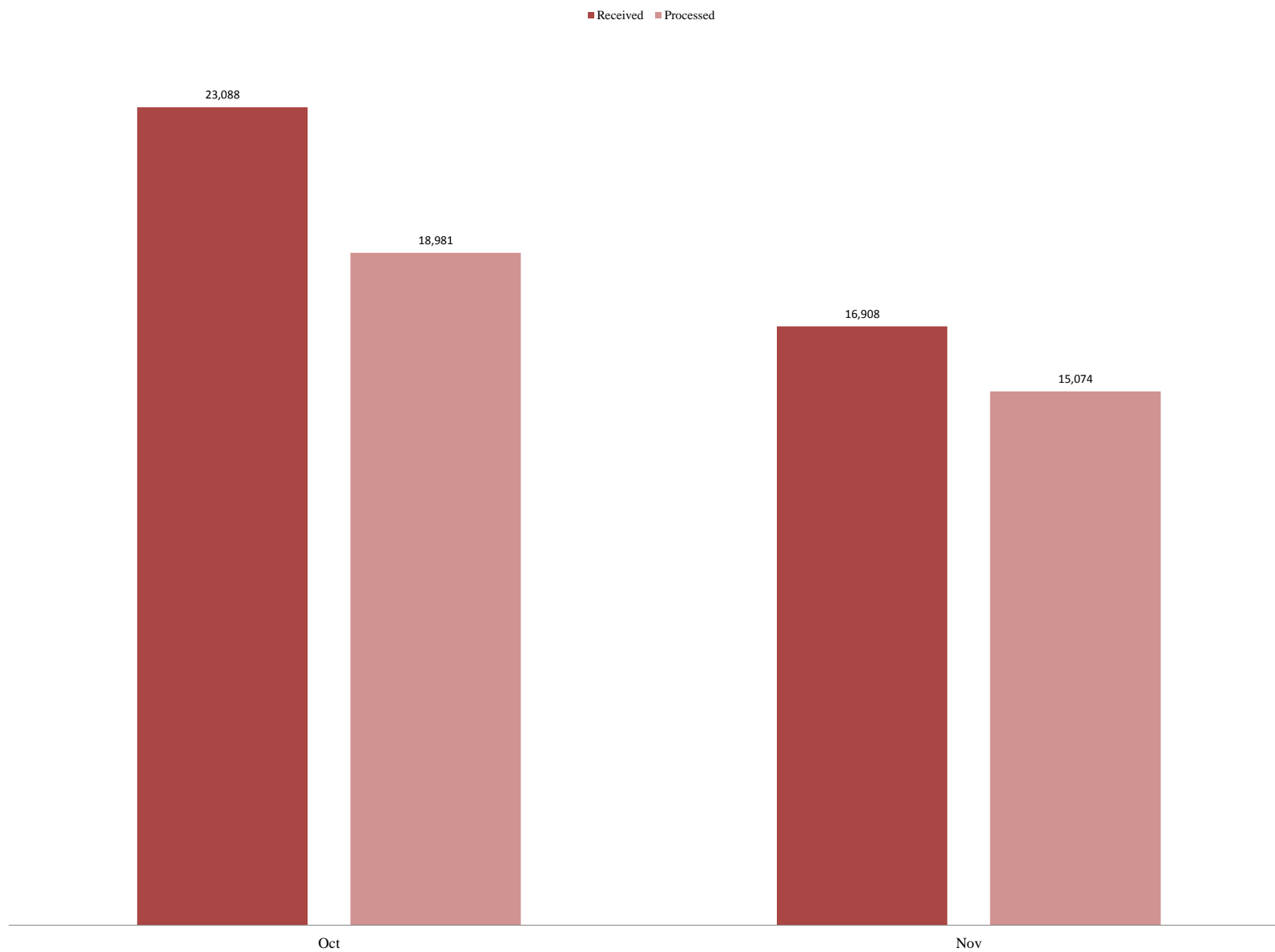
Comparison of Numbers of Administrative Appeals from FY 2014 and Current Monthly Reports – Appeals Received, and Processed

Component	Number of Appeals Received		Number of Appeals Processed	
	Received During Fiscal Year from FY 2014 Annual Report	Received During Fiscal Year from Current Monthly Reports	Processed During Fiscal Year from FY 2014 Annual Report	Processed During Fiscal Year from Current Monthly Reports
CBP	1004	236	991	197
FEMA	16	1	17	0
FLETC	2	0	4	0
ICE	477	27	339	6
OGC	93	11	101	10
OIG	16	3	25	13
TSA	35	2	36	11
USCG	32	11	28	10
USCIS	1,926	288	1,919	273
USSS	33	4	30	5
AGENCY OVERALL	3,634	583	3,490	525

Comparison of Backlogged Administrative Appeals from FY 2014 and Current Monthly Reports

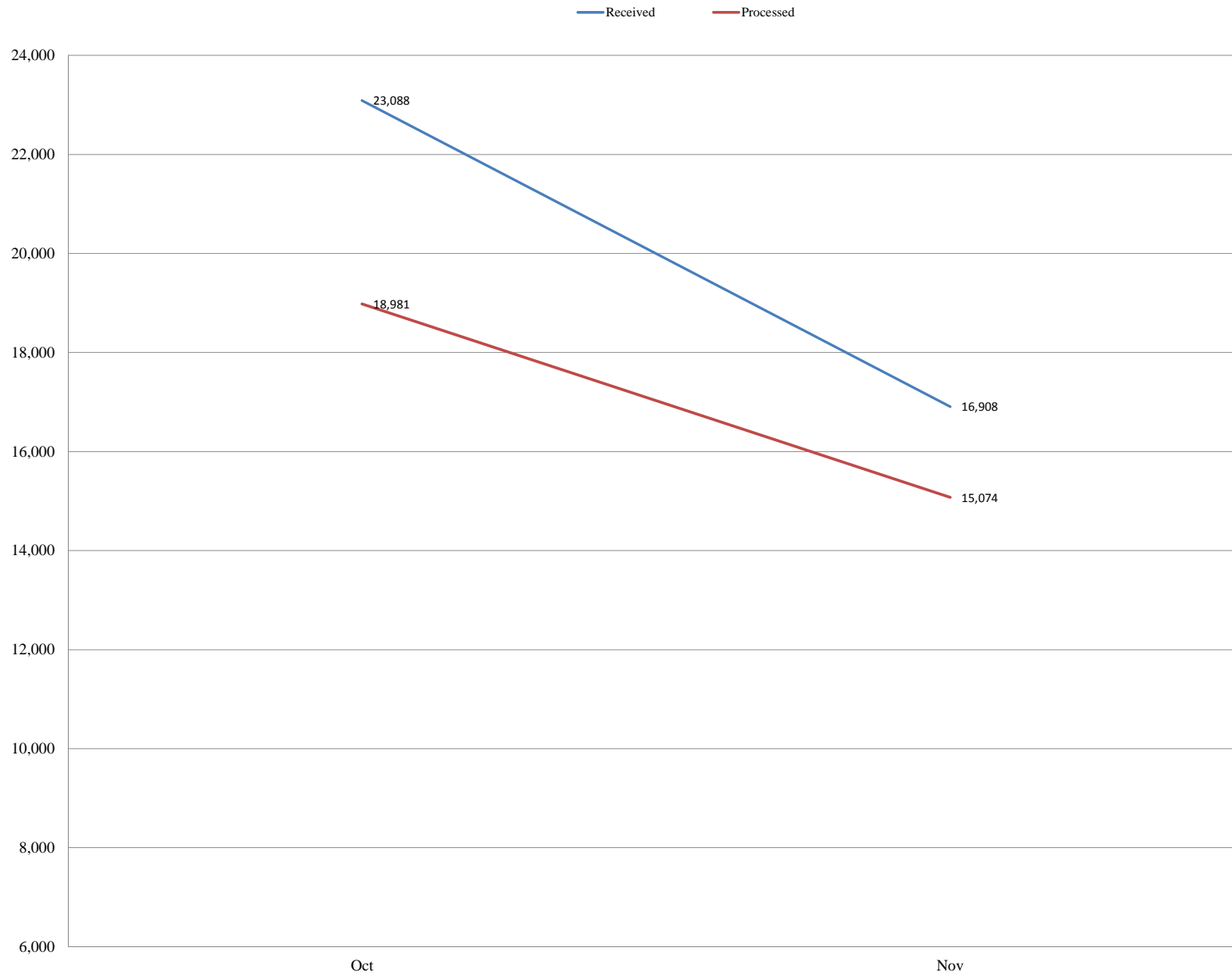
Component	Number of Backlogged Appeals as of End of FY 2014	Number of Backlogged Appeals from Current Monthly Reports	Percent Change
CBP	8	20	INCREASE 150%
FEMA	30	31	INCREASE 3%
FLETC	0	0	NO CHANGE 0%
ICE	43	147	INCREASE 242%
OGC	11	10	DECREASE 9%
OIG	17	9	DECREASE 47%
TSA	12	4	DECREASE 67%
USCG	33	33	NO CHANGE 0%
USCIS	2	35	INCREASE 1650%
USSS	4	2	DECREASE 50%
AGENCY OVERALL	160	291	INCREASE 82%

Composite DHS Monthly Production Rate of Received and Processed FOIA Requests



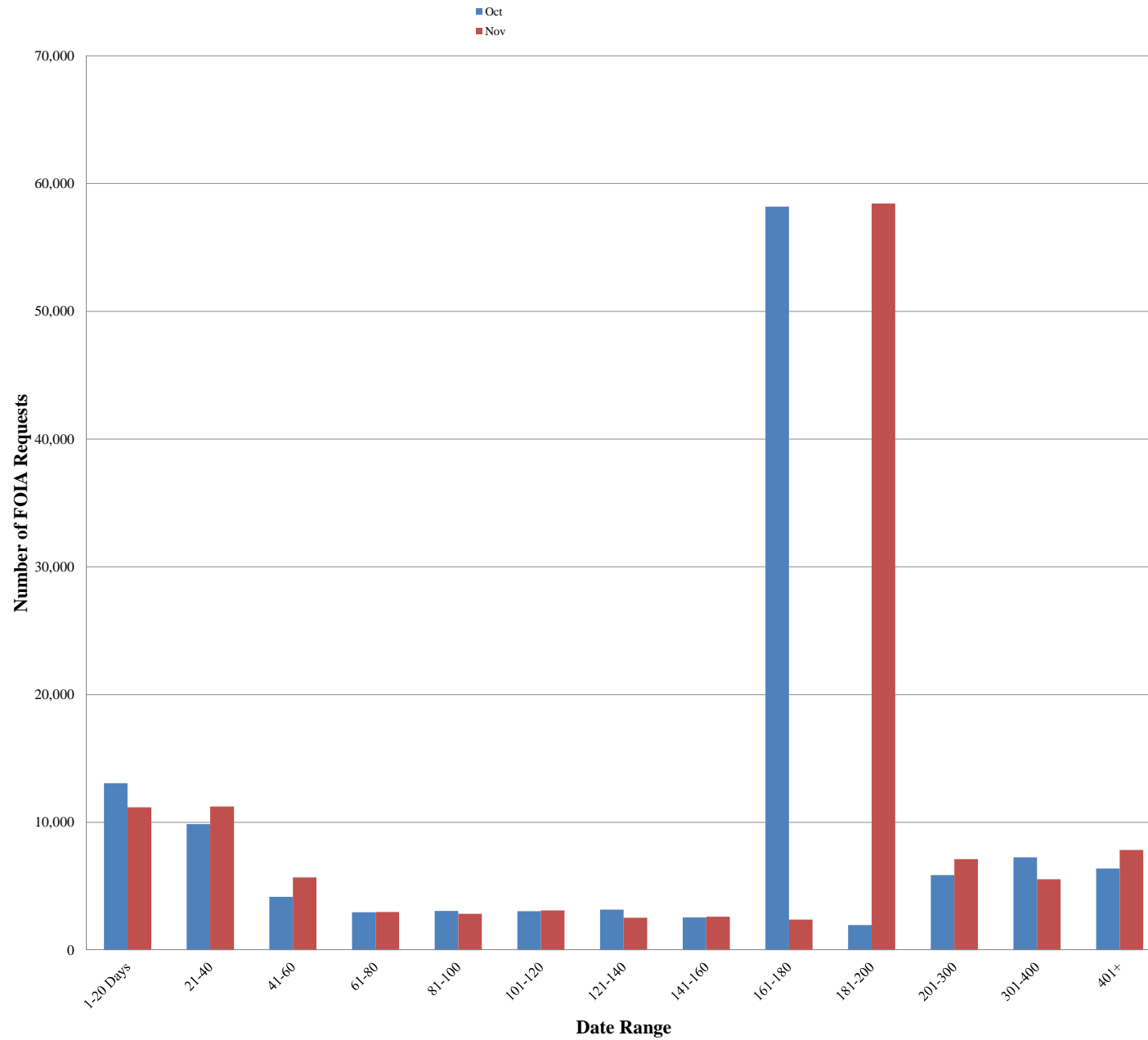
The data contained in this report is draft and posted publicly as a matter of administrative discretion

Composite DHS Monthly Production Rates of Received and Processed FOIA Requests



The data contained in this report is draft and posted publicly as a matter of administrative discretion

Composite Pending Age of DHS Requests FOIA Requests



The data contained in this report is draft and posted publicly as a matter of administrative discretion

10 Oldest as Reported in FOIA Annual Report FY 2014

Red= Cases that are still open

Green= Cases closed in the last reporting period

No Fill=Indicates that the case was closed in previous month or earlier

Pending Requests – Ten Oldest Pending Perfected Requests

Component	Sub-Row Heading	10th	9th	8th	7th	6th	5th	4th	3rd	2nd	Oldest Request
CBP	Date of Receipt	2012-11-08	2012-11-08	2012-11-08	2012-11-08	2012-11-07	2012-11-07	2012-11-07	2012-11-06	2012-10-23	2012-10-09
	Number of Days Pending	482	482	482	482	482	483	483	484	494	504
CRCL	Date of Receipt	N/A	2012-09-29	2012-09-24	2012-09-24	2012-09-03	8/25/2014	8/25/2014	2014-07-30	2014-05-19	2014-03-24
	Number of Days Pending	0	1	4	4	19	26	26	44	96	136
FEMA	Date of Receipt	2012-03-09	2012-03-05	2012-03-05	2012-02-27	2012-02-08	2012-02-06	2011-11-28	2011-01-03	2010-09-10	2007-09-07
	Number of Days Pending	644	648	648	653	665	667	715	944	1,020	1,761
FLETC	Date of Receipt	N/A	N/A	N/A	2014-09-24	2014-09-24	2014-09-11	2014-09-11	2014-09-11	2014-09-09	2014-08-22
	Number of Days Pending	0	0	0	1	1	13	13	13	15	27
I&A	Date of Receipt	2014-05-15	2014-04-29	2014-04-10	2014-01-20	2013-10-22	2013-10-18	2013-09-27	2013-08-01	2013-07-22	2013-02-12
	Number of Days Pending	100	111	124	182	244	246	260	300	308	420
ICE	Date of Receipt	2013-06-24	2013-06-24	2013-05-21	2013-04-30	2013-04-17	2013-04-10	2012-11-15	2012-11-15	2012-11-04	2012-10-10
	Number of Days Pending	327	327	350	365	374	379	478	478	485	503
NPPD	Date of Receipt	2014-01-15	2014-01-15	2014-01-15	2014-01-15	2014-01-15	2014-01-15	2014-01-07	2014-01-06	2014-01-06	2014-01-06
	Number of Days Pending	185	185	185	185	185	185	191	192	192	192
OIG	Date of Receipt	2013-08-30	2013-08-06	2013-08-06	2013-06-17	2013-06-13	2013-05-20	2013-03-13	2013-03-01	2013-02-28	2013-02-01
	Number of Days Pending	280	297	297	332	334	351	399	407	408	526
OPS	Date of Receipt	N/A	N/A	N/A	N/A	N/A	N/A	N/A	N/A	N/A	N/A
	Number of Days Pending	0	0	0	0	0	0	0	0	0	0
PRIV	Date of Receipt	2013-11-13	2013-10-24	2013-10-21	2013-10-17	2013-10-17	2013-09-25	2013-09-03	2013-08-26	2013-08-26	2013-07-08
	Number of Days Pending	220	233	236	238	238	242	258	263	263	298
S&T	Date of Receipt	N/A	N/A	N/A	N/A	N/A	N/A	N/A	N/A	N/A	2014-07-18
	Number of Days Pending	0	0	0	0	0	0	0	0	0	52
TSA	Date of Receipt	2010-08-26	2010-06-24	2010-06-14	2010-04-10	2010-03-30	2010-03-22	2010-02-25	2010-01-29	2010-01-05	2009-11-23
	Number of Days Pending	1,030	1,074	1,082	1,133	1,135	1,141	1,158	1,172	1,189	1,217
USCG	Date of Receipt	2010-06-11	2010-05-26	2010-05-17	2010-05-07	2010-04-27	2010-04-05	2010-03-30	2010-02-24	2010-02-22	2009-11-25
	Number of Days Pending	1091	1102	1109	1115	1123	1139	1143	1167	1169	1223
USCIS	Date of Receipt	2014-01-31	2014-01-29	2014-01-24	2014-01-24	2014-01-23	2014-01-22	2014-01-21	2014-01-06	2013-12-04	2013-11-21
	Number of Days Pending	173	175	178	178	179	180	181	184	215	223
USSS	Date of Receipt	2009-06-15	2009-01-30	2009-01-14	2008-10-08	2008-02-05	2008-01-29	2007-11-26	2007-10-18	2007-01-09	2006-12-01
	Number of Days Pending	1,336	1,430	1,440	1,505	1,677	1,682	1,725	1,750	1,946	1,970
AGENCY OVERALL	Date of Receipt	2009-01-30	2009-01-14	2008-10-08	2008-02-05	2008-01-29	2007-11-26	2007-10-18	2007-09-07	2007-01-09	2006-12-01
	Number of Days Pending	1,430	1,440	1,505	1,677	1,682	1,725	1,750	1,761	1,946	1,970

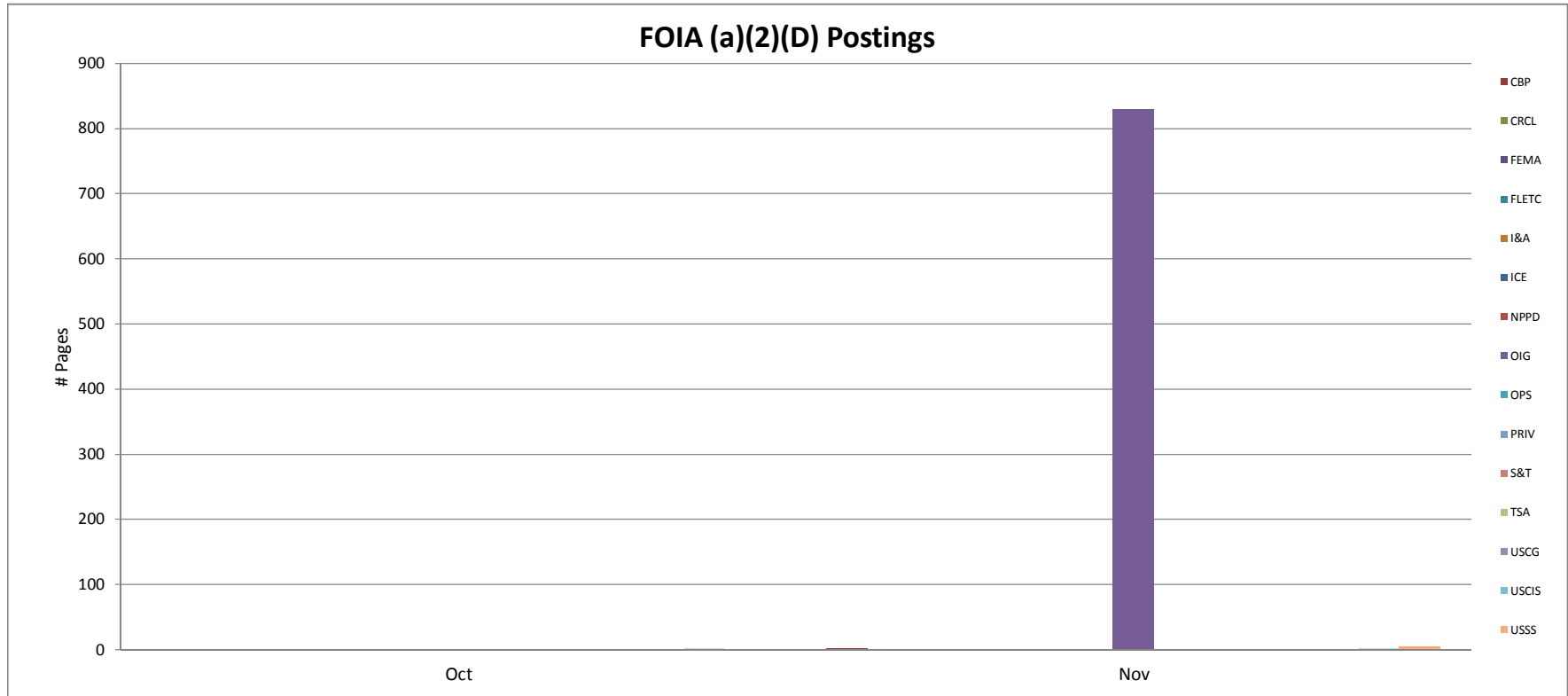
The data contained in this report is draft and posted publicly as a matter of administrative discretion

Ten Oldest Pending Administrative Appeals

Component	Sub-Row Heading	10th	9th	8th	7th	6th	5th	4th	3rd	2nd	Oldest Appeal
CBP	Date of Receipt	2014-09-12	2014-09-12	2014-06-05	2014-03-07	2014-03-07	2013-12-23	2013-12-16	2013-12-16	2013-12-12	2013-12-03
	Number of Days Pending	13	13	84	148	148	202	207	207	209	216
FEMA	Date of Receipt	2012-10-12	2012-07-24	2012-03-06	2011-10-28	2011-10-22	2010-10-11	2010-04-12	2009-08-31	2009-06-25	2009-02-26
	Number of Days Pending	501	557	655	742	758	1007	1134	1282	1328	1412
FLETC	Date of Receipt	N/A	N/A	N/A	N/A	N/A	N/A	N/A	N/A	N/A	N/A
	Number of Days Pending	0	0	0	0	0	0	0	0	0	0
ICE	Date of Receipt	2013-04-11	2013-04-11	2013-04-10	2013-03-27	2013-03-13	2013-03-13	2013-02-20	2013-02-20	2013-01-14	2013-01-02
	Number of Days Pending	371	371	372	382	392	392	407	407	432	440
OGC	Date of Receipt	2014-08-27	2014-08-22	2014-08-22	2014-08-08	2014-07-25	2014-06-24	2014-06-03	2014-04-29	2014-02-18	2013-10-27
	Number of Days Pending	24	27	27	37	47	69	84	108	258	235
OIG	Date of Receipt	2013-07-25	2013-06-24	2012-12-17	2012-09-06	2012-06-06	2012-07-03	2010-11-10	2010-09-15	2009-01-14	2008-11-14
	Number of Days Pending	305	327	457	526	548	571	986	1025	1440	1480
TSA	Date of Receipt	2014-06-25	2014-04-28	2014-04-28	2014-04-23	2014-02-27	2014-02-04	2014-01-09	2013-11-27	2013-10-23	2012-11-15
	Number of Days Pending	72	112	115	157	159	171	189	220	243	475
USCG	Date of Receipt	2013-07-02	2013-06-18	2013-06-12	2013-05-06	2013-04-04	2013-03-15	2013-02-18	2013-01-30	2012-08-02	2009-03-10
	Number of Days Pending	321	331	335	361	383	397	416	428	550	1404
USCIS	Date of Receipt	2014-09-15	2014-09-15	2014-09-10	2014-09-10	2014-09-10	2014-09-10	2014-09-10	2014-09-10	2014-08-08	2014-07-18
	Number of Days Pending	12	12	15	15	15	15	15	15	38	53
USSS	Date of Receipt	N/A	N/A	N/A	N/A	N/A	2014-09-05	2014-08-27	2014-08-13	2014-08-08	2014-06-24
	Number of Days Pending	0	0	0	0	0	17	23	33	38	68
AGENCY OVERALL	Date of Receipt	2010-11-10	2010-10-11	2010-09-15	2010-04-12	2009-08-31	2009-06-25	2009-03-10	2009-02-26	2009-01-14	2008-11-14
	Number of Days Pending	986	1,007	1,025	1,134	1,282	1,328	1,404	1,412	1,440	1,480

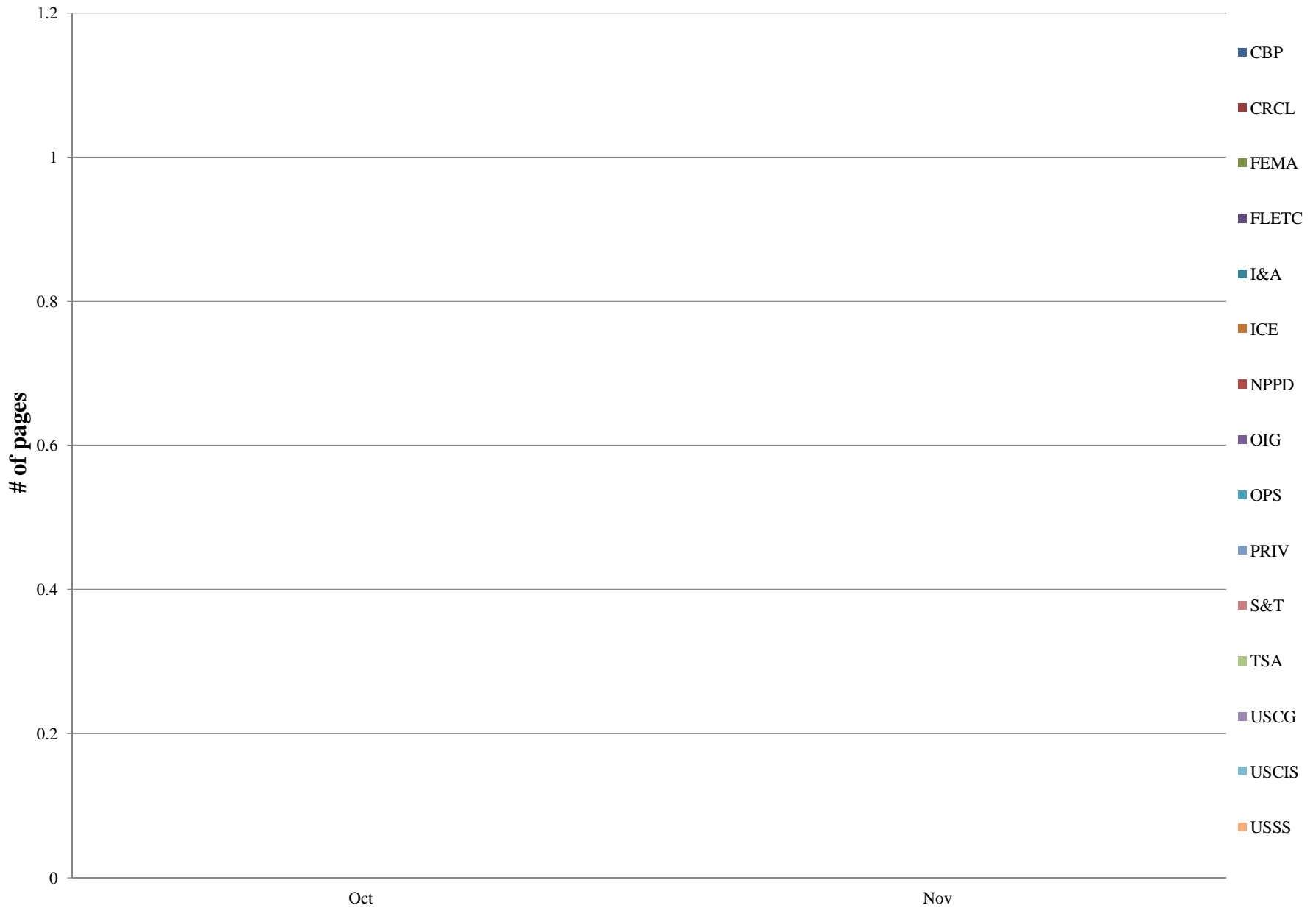
FOIA (a)(2)(D) Postings (pgs)

Component	Oct	Nov	Dec	Jan	Feb	Mar	Apr	May	Jun	Jul	Aug	Sep
CBP		2										
CRCL												
FEMA												
FLETC												
I&A												
ICE												
NPPD												
OIG		830										
OPS												
PRIV												
S&T												
TSA												
USCG												
USCIS	2	2										
USSS		4										
AGENCY OVERALL	2	838	0	0	0	0	0	0	0	0	0	0



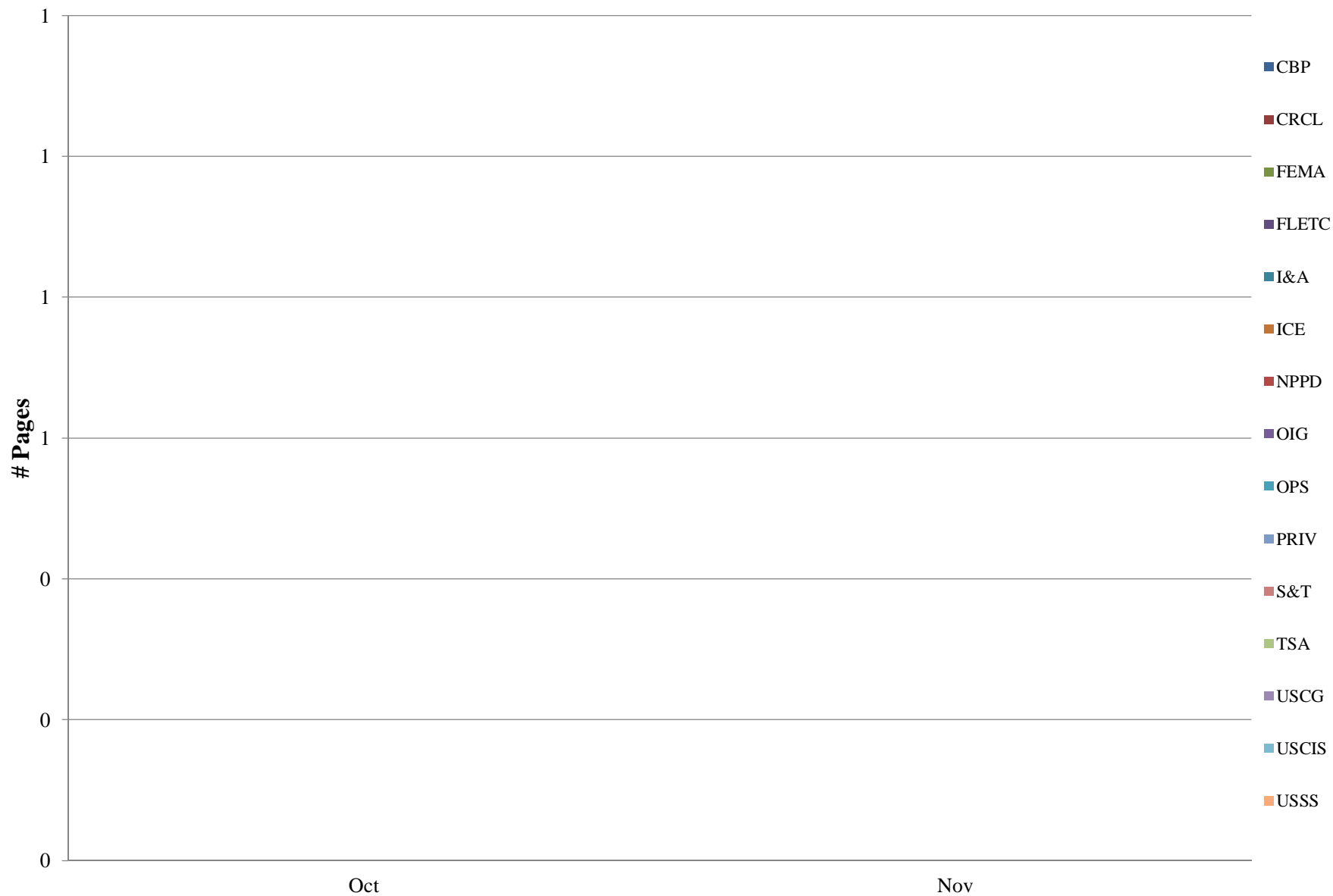
Proactive Disclosures Postings (pgs) - Senior Agency Officials' Calendars posted in FOIA Library												
Component	Oct	Nov	Dec	Jan	Feb	Mar	Apr	May	Jun	Jul	Aug	Sep
CBP												
CRCL												
FEMA												
FLETC												
I&A												
ICE												
NPPD												
OIG												
OPS												
PRIV												
S&T												
TSA												
USCG												
USCIS												
USSS												
AGENCY OVERALL	0	0	0	0	0	0	0	0	0	0	0	0

Senior Agency Officials' Calendars posted in FOIA Library



Proactive Disclosures Postings (pgs) - Executed Contracts and Grants posted in FOIA Library (posted immediately after released pursuant to a FOIA request)												
Component	Oct	Nov	Dec	Jan	Feb	Mar	Apr	May	Jun	Jul	Aug	Sep
CBP												
CRCL												
FEMA												
FLETC												
I&A												
ICE												
NPPD												
OIG												
OPS												
PRIV												
S&T												
TSA												
USCG												
USCIS												
USSS												
AGENCY OVERALL	0	0	0	0	0	0	0	0	0	0	0	0

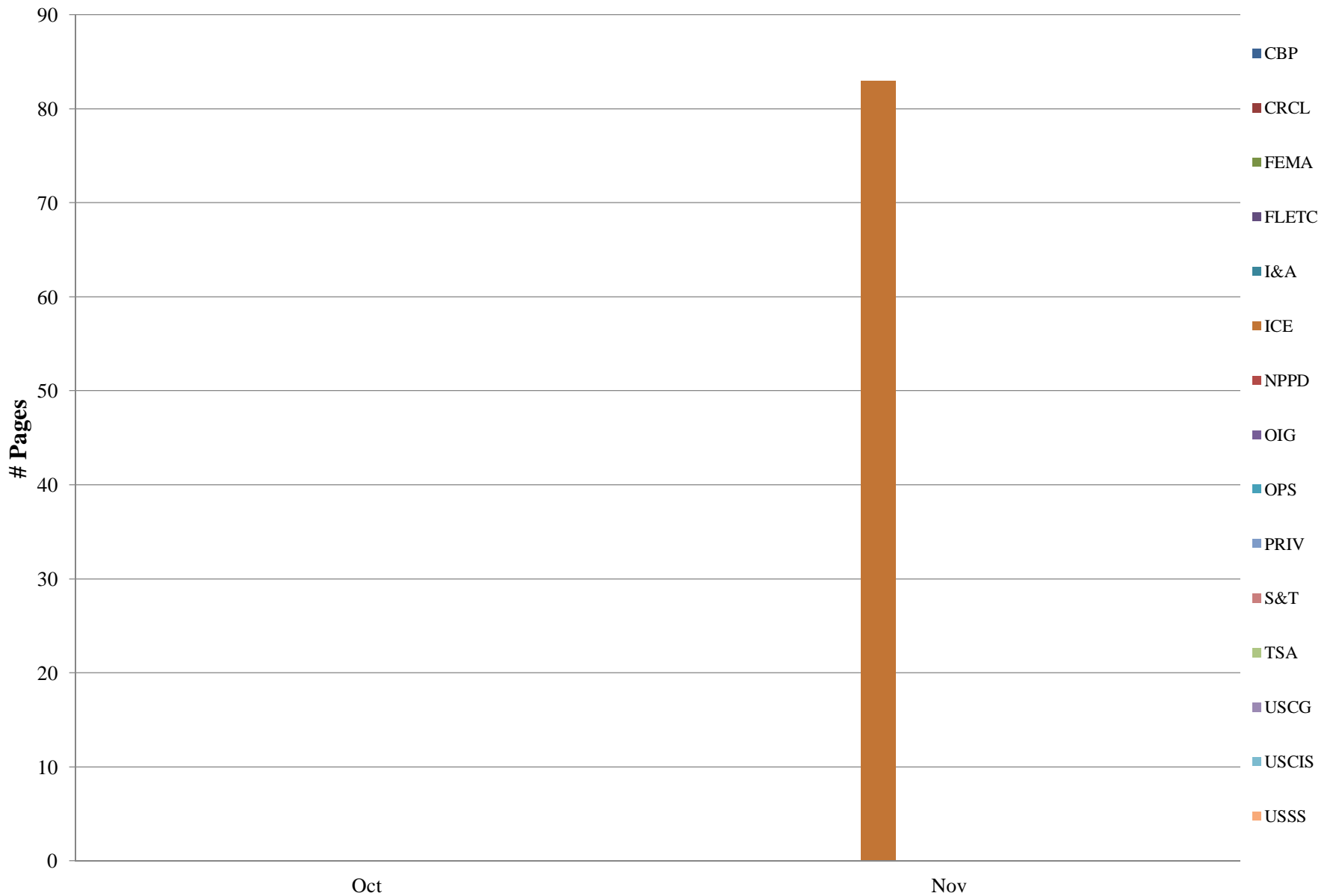
Executed Contracts and Grants (posted immediately after released pursuant to a FOIA request) posted in FOIA Library



**Proactive Disclosures Postings (pgs) - Management Directives and Instructions posted in FOIA Library
(Policies, Handbooks, Official Guidance and Correspondence Records)**

Component	Oct	Nov	Dec	Jan	Feb	Mar	Apr	May	Jun	Jul	Aug	Sep
CBP												
CRCL												
FEMA												
FLETC												
I&A												
ICE		83										
NPPD												
OIG												
OPS												
PRIV												
S&T												
TSA												
USCG												
USCIS												
USSS												
AGENCY OVERALL	0	83	0	0	0	0	0	0	0	0	0	0

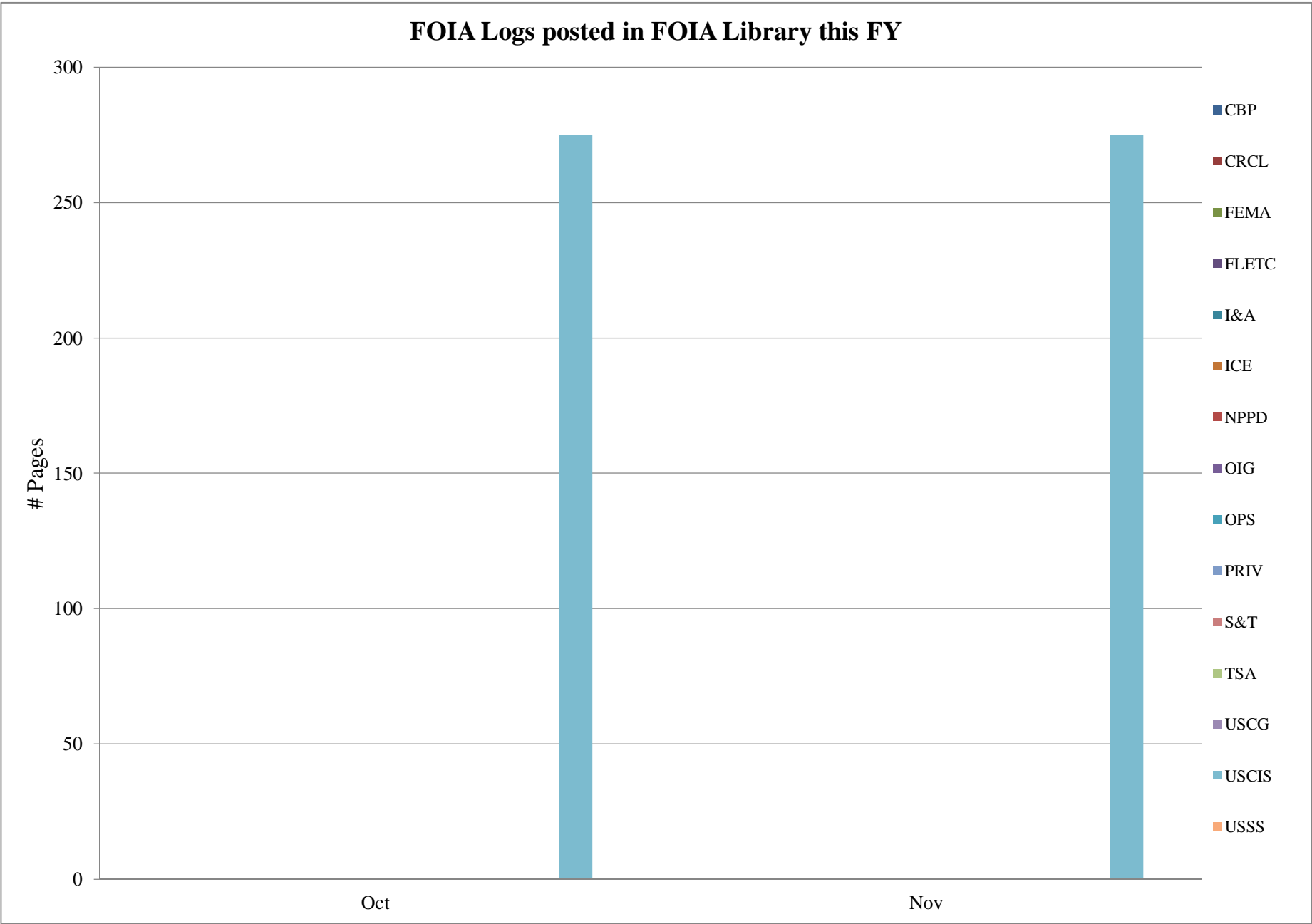
Management Directives and Instructions (Policies, Handbooks, and Official Guidance) posted in FOIA Library



FOIA Logs posted in FOIA Library this FY (Pages)

Component	Oct	Nov	Dec	Jan	Feb	Mar	Apr	May	Jun	Jul	Aug	Sep
CBP												
CRCL												
FEMA												
FLETC												
I&A												
ICE												
NPPD												
OIG												
OPS												
PRIV												
S&T												
TSA												
USCG												
USCIS	275	275										
USSS												
AGENCY OVERALL	275	275	0	0	0	0	0	0	0	0	0	0

FOIA Logs posted in FOIA Library this FY

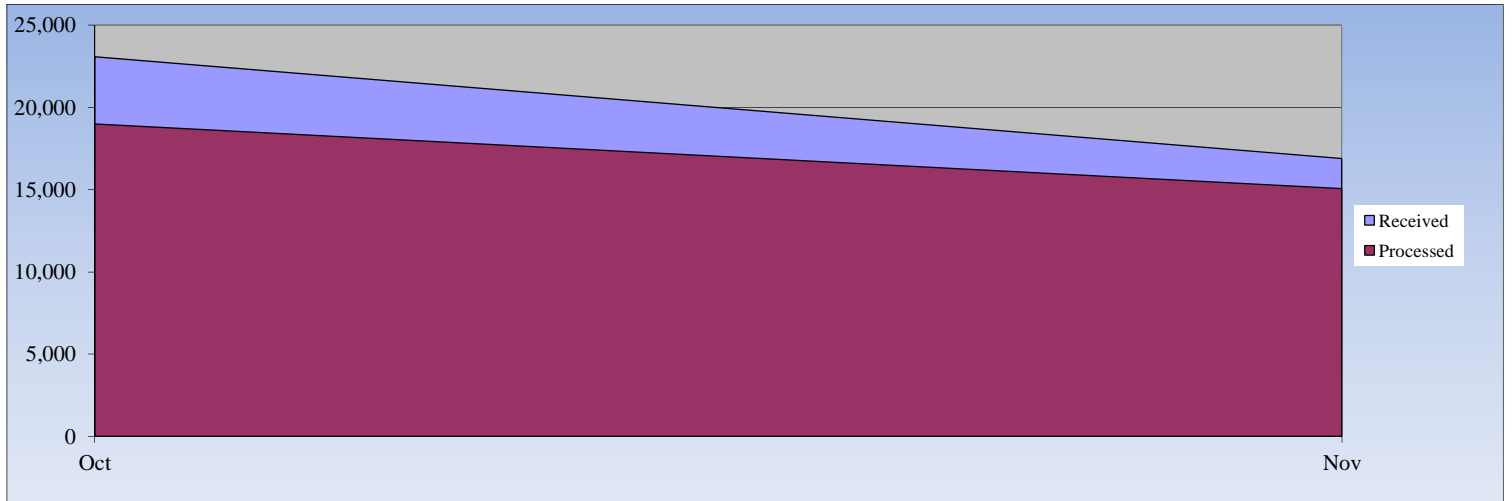


[illegible]

Composite Department of Homeland Security (DHS)

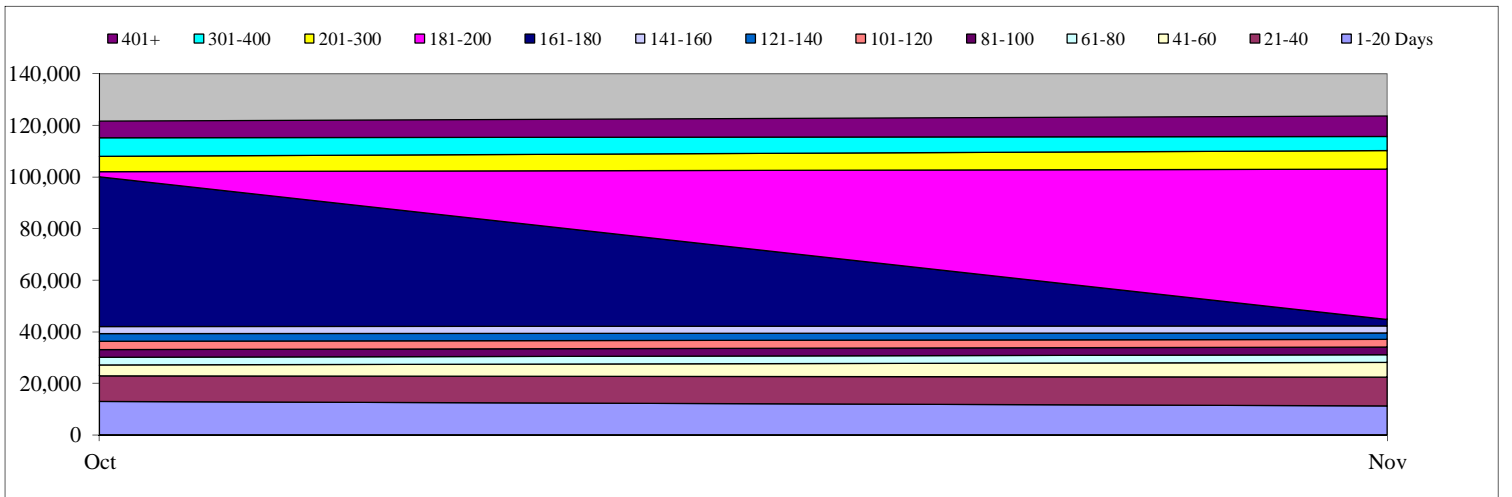
Monthly Production Rates

	Oct	Nov	Dec	Jan	Feb	Mar	Apr	May	June	Jul	Aug	Sep
Received	23,088	16,908	0	0	0	0	0	0	0	0	0	0
Processed	18,981	15,074	0	0	0	0	0	0	0	0	0	0



Days Pending for Open Cases

	Oct	Nov	Dec	Jan	Feb	Mar	Apr	May	June	Jul	Aug	Sep
1-20 Days	13,057	11,182	0	0	0	0	0	0	0	0	0	0
21-40	9,868	11,243	0	0	0	0	0	0	0	0	0	0
41-60	4,180	5,694	0	0	0	0	0	0	0	0	0	0
61-80	2,969	2,992	0	0	0	0	0	0	0	0	0	0
81-100	3,062	2,843	0	0	0	0	0	0	0	0	0	0
101-120	3,056	3,113	0	0	0	0	0	0	0	0	0	0
121-140	3,161	2,535	0	0	0	0	0	0	0	0	0	0
141-160	2,563	2,613	0	0	0	0	0	0	0	0	0	0
161-180	58,201	2,395	0	0	0	0	0	0	0	0	0	0
181-200	1,968	58,440	0	0	0	0	0	0	0	0	0	0
201-300	5,876	7,118	0	0	0	0	0	0	0	0	0	0
301-400	7,267	5,541	0	0	0	0	0	0	0	0	0	0
401+	6,379	7,835	0	0	0	0	0	0	0	0	0	0
Total	121,607	123,544	0	0	0	0	0	0	0	0	0	0



Privacy Office (PRIV)

Total Open:99

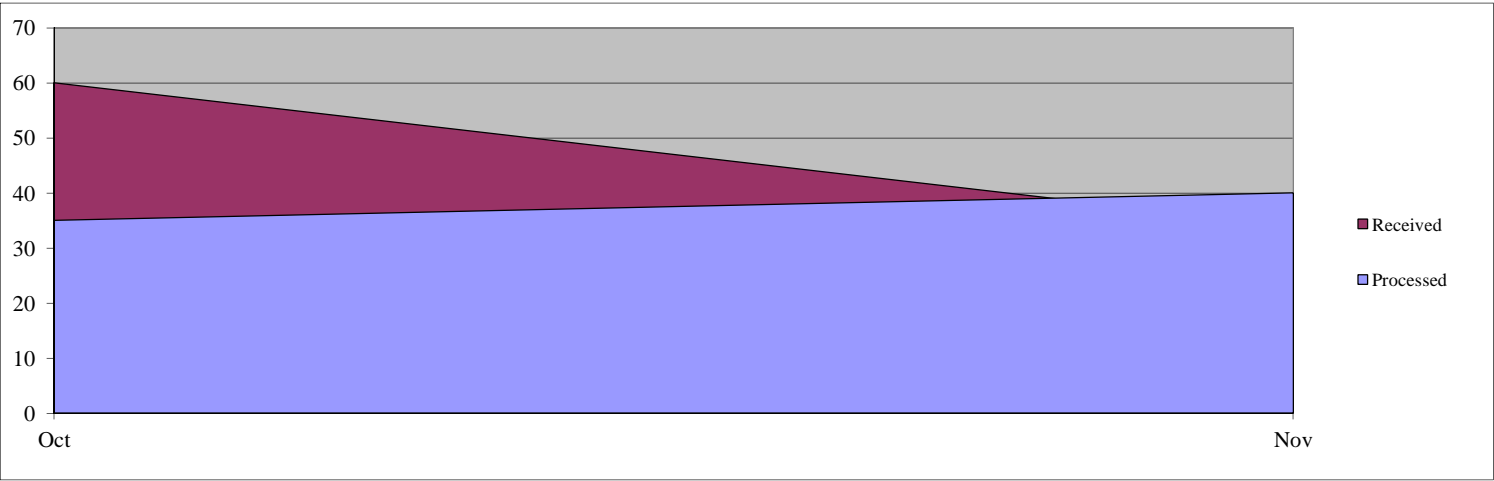
Total Received:94

Backlog:72

Total Processed:75

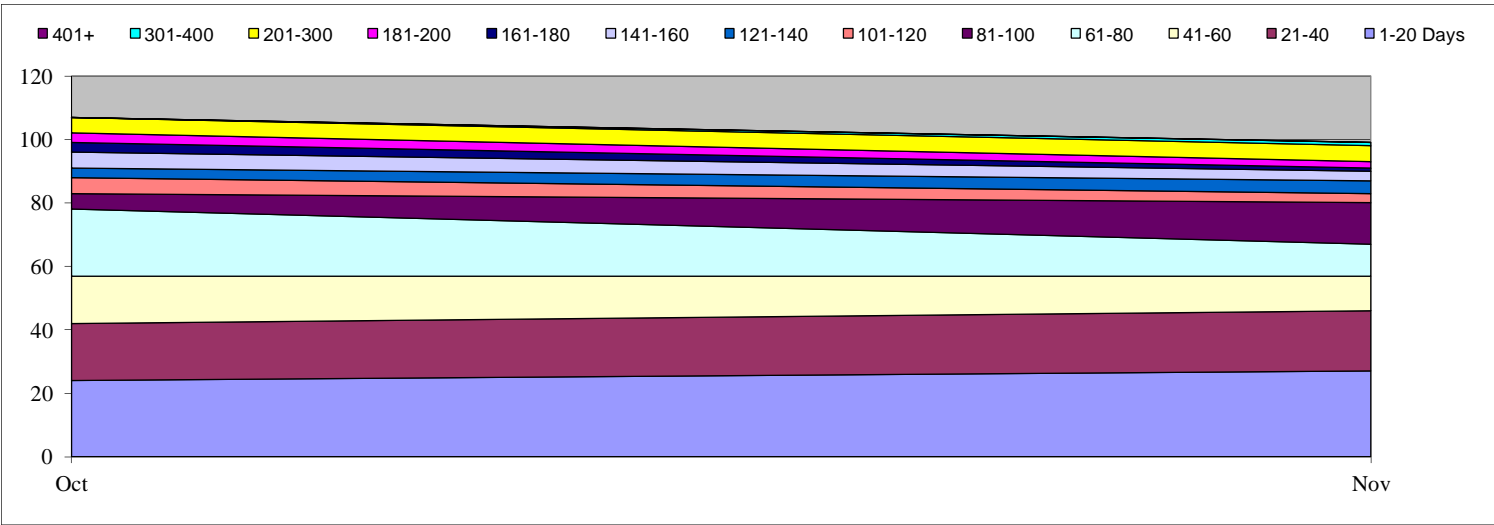
Monthly Production Rates

	Oct	Nov	Dec	Jan	Feb	Mar	Apr	May	June	Jul	Aug	Sep
Received	60	34										
Processed	35	40										



Days Pending for Open Cases

	Oct	Nov	Dec	Jan	Feb	Mar	Apr	May	June	Jul	Aug	Sep
1-20 Days	24	27										
21-40	18	19										
41-60	15	11										
61-80	21	10										
81-100	5	13										
101-120	5	3										
121-140	3	4										
141-160	5	3										
161-180	3	1										
181-200	3	2										
201-300	5	5										
301-400	0	1										
401+	0	0										
Total	107	99	0	0	0	0	0	0	0	0	0	0



Civil Rights and Civil Liberties (CRCL)

Total Open:6

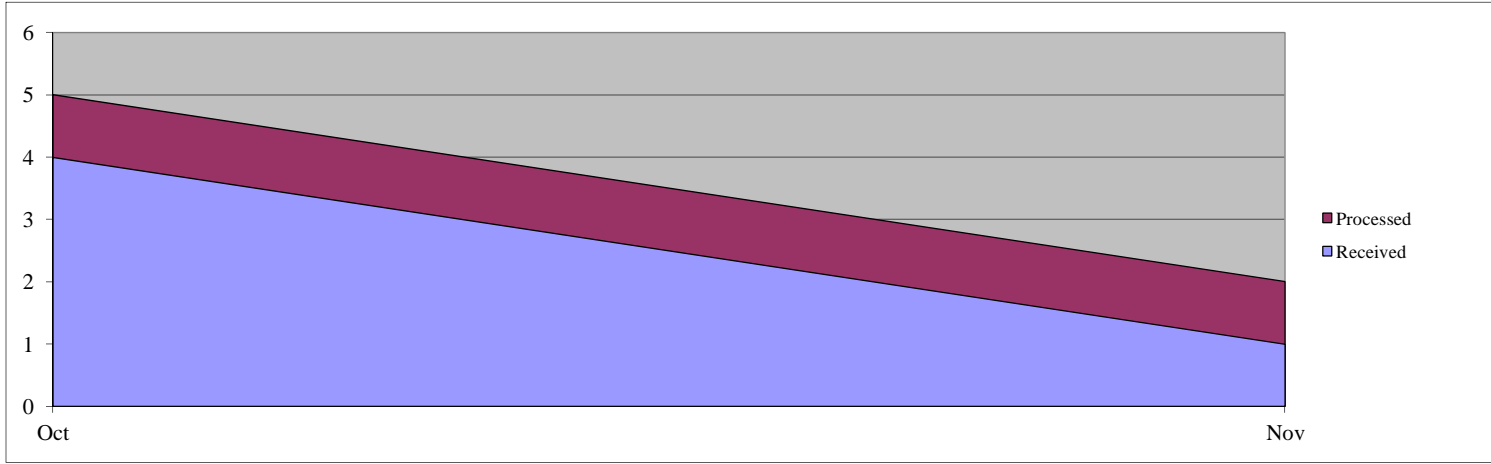
Total Received:5

Backlog:4

Total Processed:7

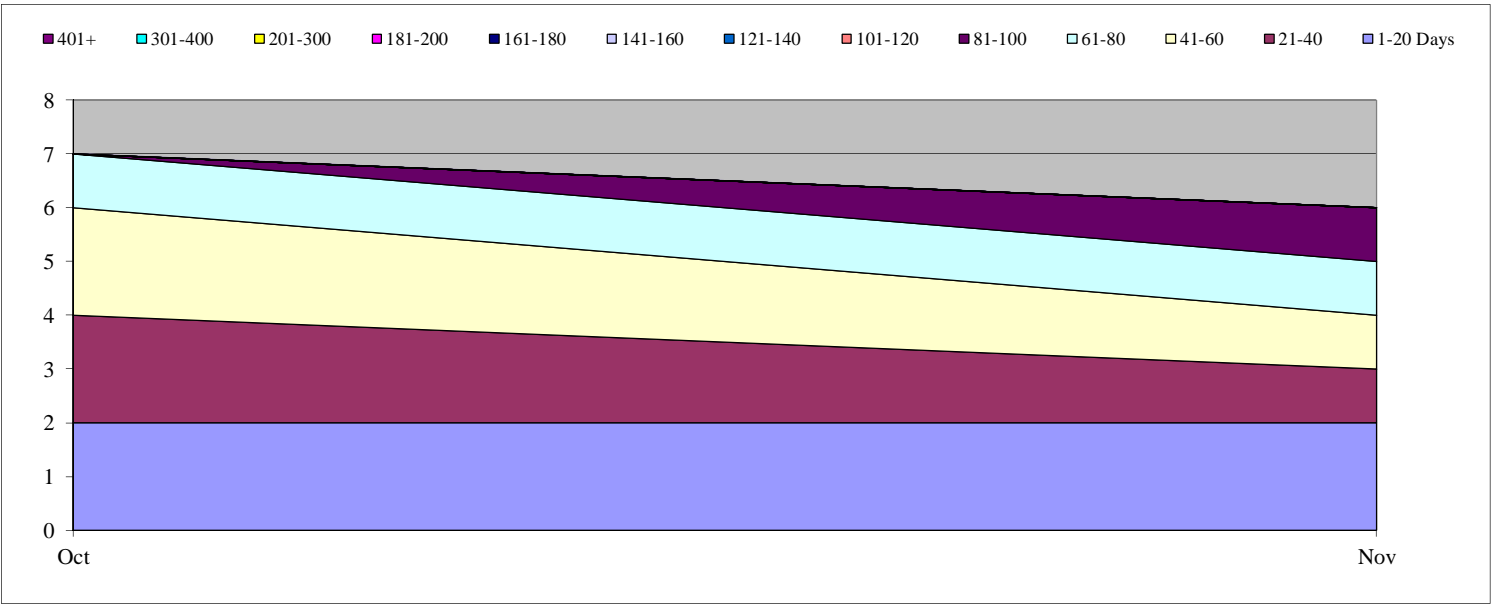
Monthly Production Rates

	Oct	Nov	Dec	Jan	Feb	Mar	Apr	May	June	Jul	Aug	Sep
Received	4	1										
Processed	5	2										



Days Pending for Open Cases

	Oct	Nov	Dec	Jan	Feb	Mar	Apr	May	June	Jul	Aug	Sep
1-20 Days	2	2										
21-40	2	1										
41-60	2	1										
61-80	1	1										
81-100	0	1										
101-120	0	0										
121-140	0	0										
141-160	0	0										
161-180	0	0										
181-200	0	0										
201-300	0	0										
301-400	0	0										
401+	0	0										
Total	7	6	0	0	0	0	0	0	0	0	0	0



National Preparedness Directorate (NPPD)

Total Open:3,430

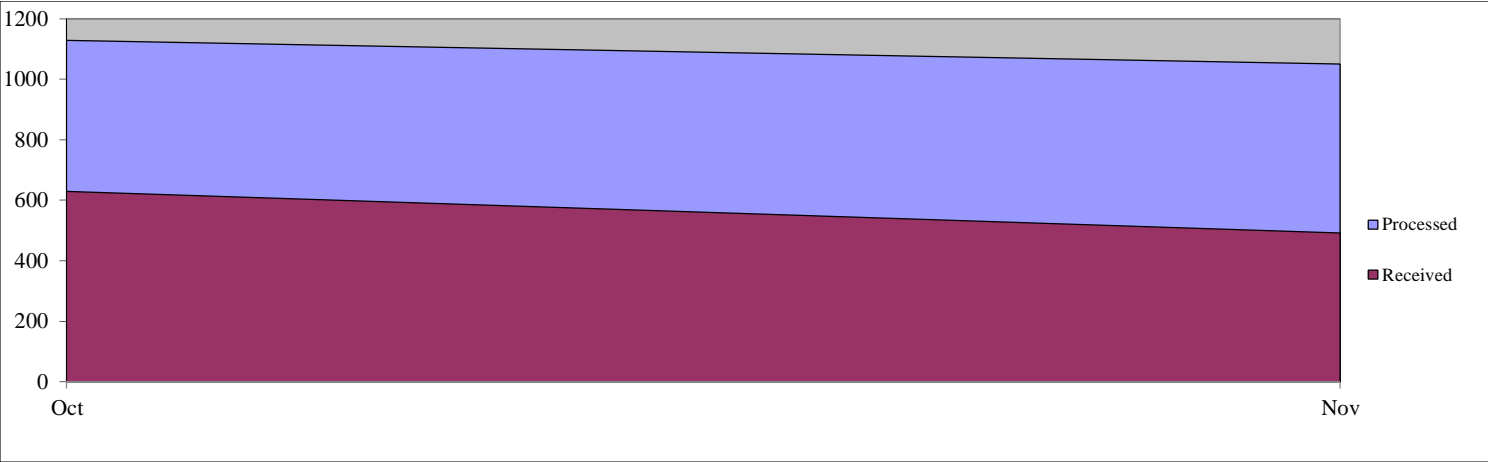
Total Received:1,122

Backlog:2,929

Total Processed:2,180

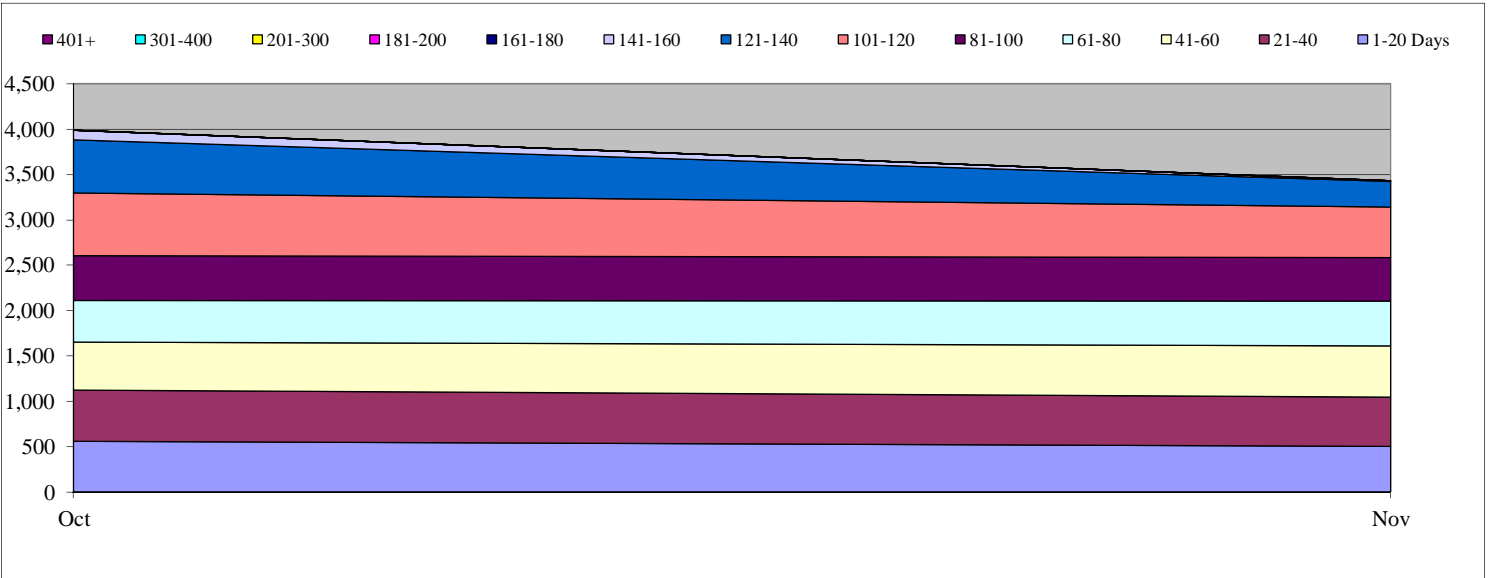
Monthly Production Rates

	Oct	Nov	Dec	Jan	Feb	Mar	Apr	May	June	Jul	Aug	Sep
Received	630	492										
Processed	1129	1051										



Days Pending for Open Cases

	Oct	Nov	Dec	Jan	Feb	Mar	Apr	May	June	Jul	Aug	Sep
1-20 Days	562	501										
21-40	565	548										
41-60	526	565										
61-80	461	493										
81-100	492	477										
101-120	693	556										
121-140	581	285										
141-160	106	2										
161-180	2	0										
181-200	2	2										
201-300	0	1										
301-400	0	0										
401+	0	0										
Total	3,990	3,430	0	0	0	0	0	0	0	0	0	0



Customs and Border Protection (CBP)

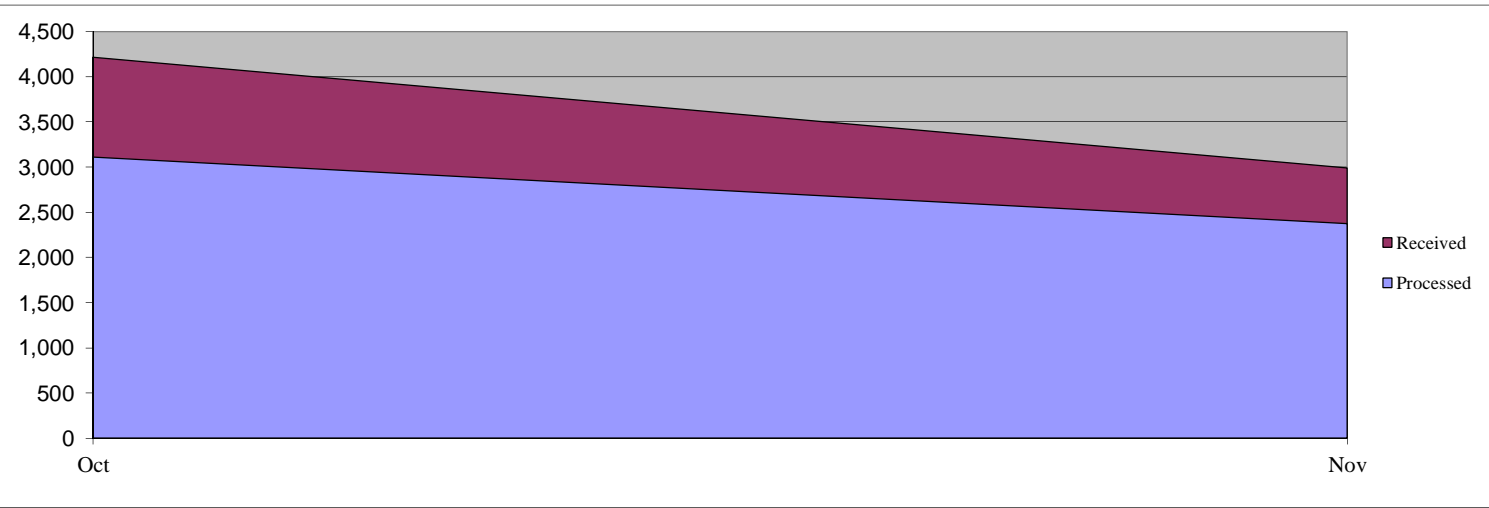
Total Open: 39,748

Total Received: 7,202
Total Processed: 5,489

Backlog: 37,464

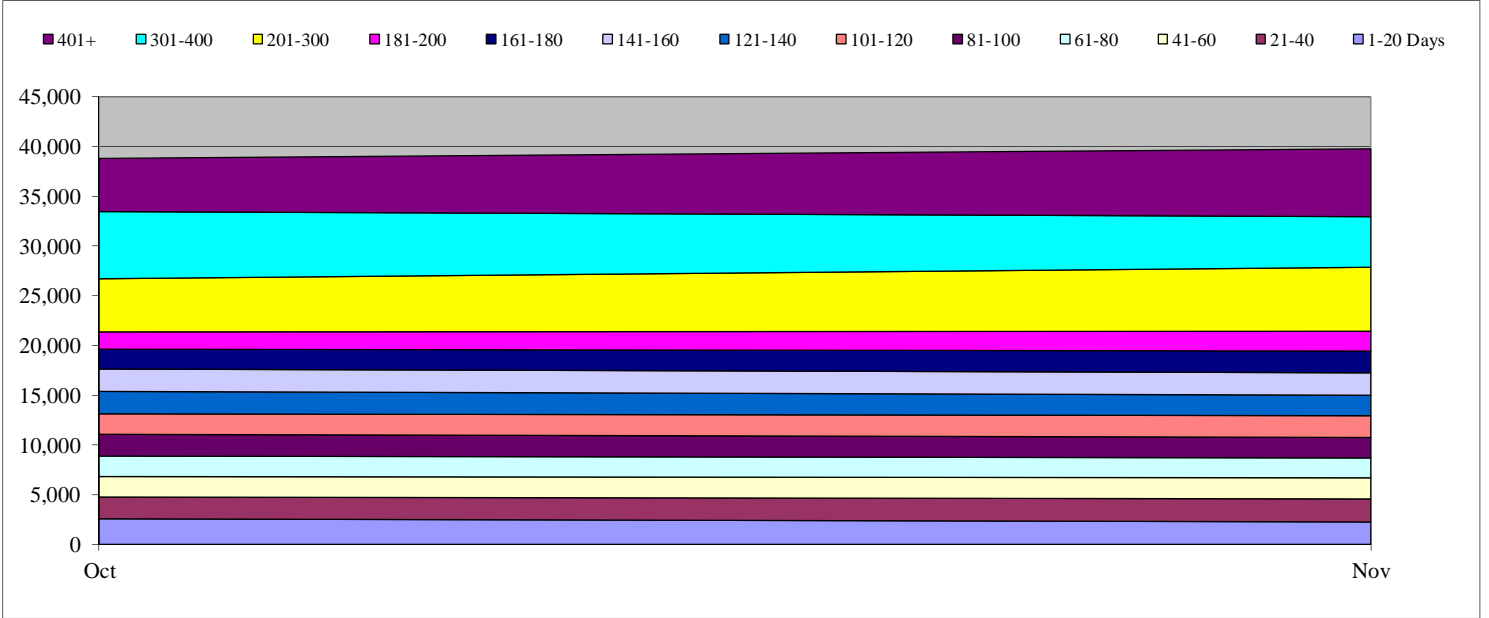
Monthly Production Rates

	Oct	Nov	Dec	Jan	Feb	Mar	Apr	May	June	Jul	Aug	Sep
Received	4,214	2,988										
Processed	3,112	2,377										



Days Pending for Open Cases

	Oct	Nov	Dec	Jan	Feb	Mar	Apr	May	June	Jul	Aug	Sep
1-20 Days	2,603	2,284										
21-40	2,159	2,329										
41-60	2,100	2,062										
61-80	2,022	2,051										
81-100	2,168	2,001										
101-120	2,111	2,206										
121-140	2,248	2,039										
141-160	2,212	2,298										
161-180	1,987	2,166										
181-200	1,787	1,973										
201-300	5,305	6,466										
301-400	6,775	5,094										
401+	5,340	6,779										
Total	38,817	39,748	0	0	0	0	0	0	0	0	0	0



U.S. Citizenship and Immigration Services (USCIS)

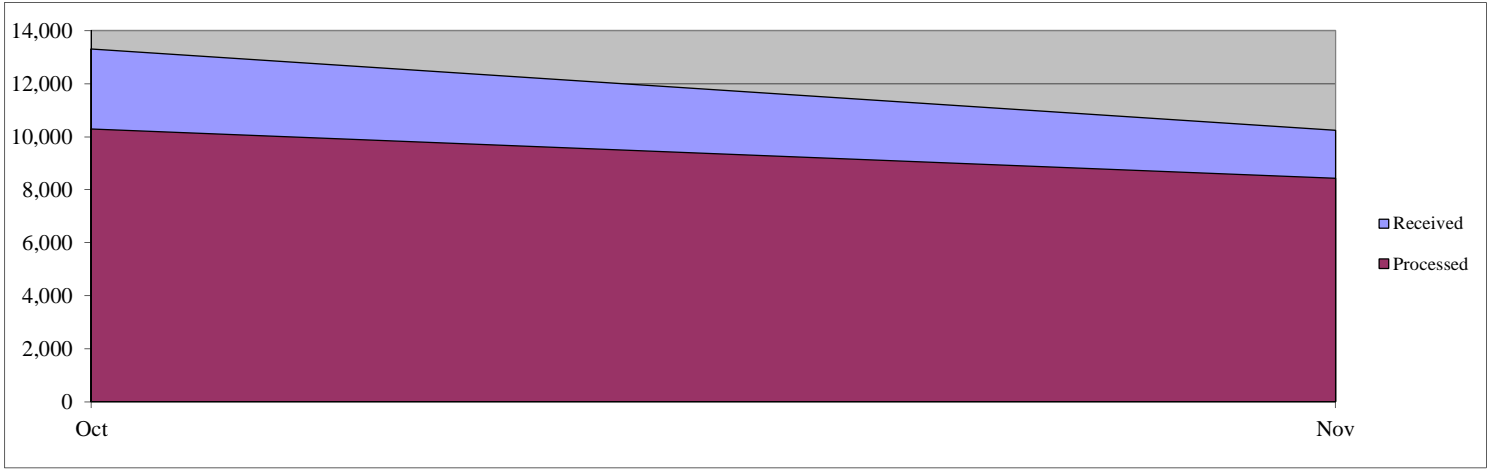
Total Open: 18,236

Total Received: 23,552
Total Processed: 18,721

Backlog: 10,768

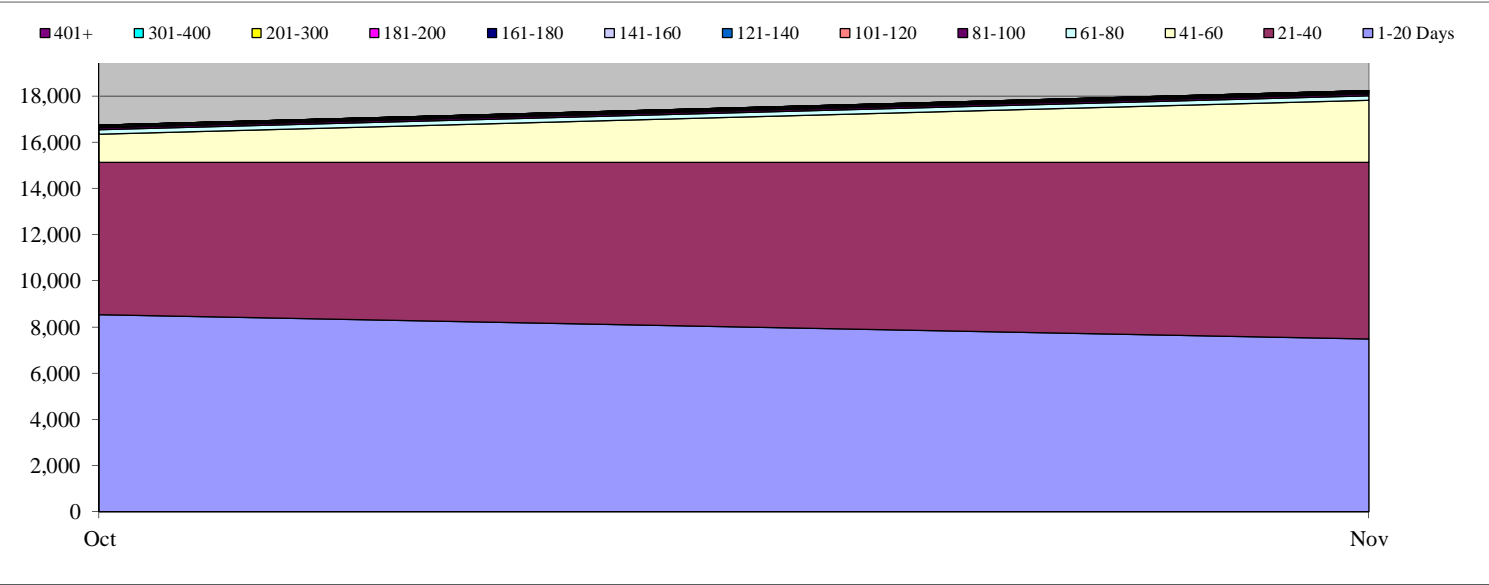
Monthly Production Rates

	Oct	Nov	Dec	Jan	Feb	Mar	Apr	May	June	Jul	Aug	Sep
Received	13,321	10,231										
Processed	10,289	8,432										



Days Pending for Open Cases

	Oct	Nov	Dec	Jan	Feb	Mar	Apr	May	June	Jul	Aug	Sep
1-20 Days	8,529	7,468										
21-40	6,606	7,647										
41-60	1,209	2,711										
61-80	200	170										
81-100	69	101										
101-120	48	44										
121-140	17	32										
141-160	30	13										
161-180	17	23										
181-200	12	14										
201-300	3	13										
301-400	0	0										
401+	0	0										
Total	16,740	18,236	0	0	0	0	0	0	0	0	0	0



U.S. Coast Guard (USCG)

Total Open:1,745

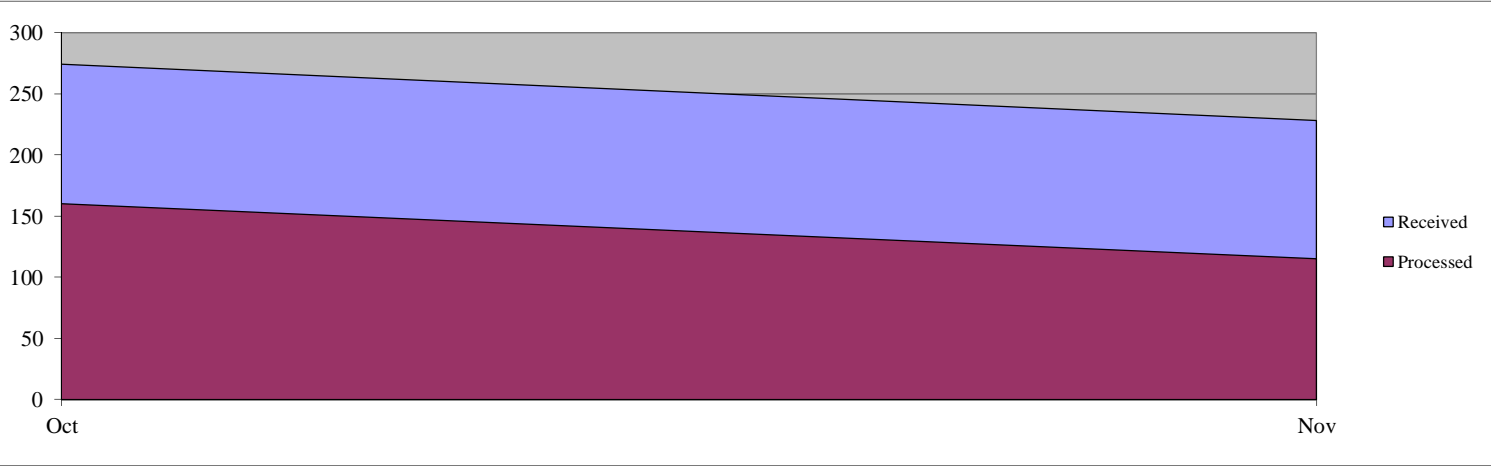
Total Received:502

Backlog:1,549

Total Processed:275

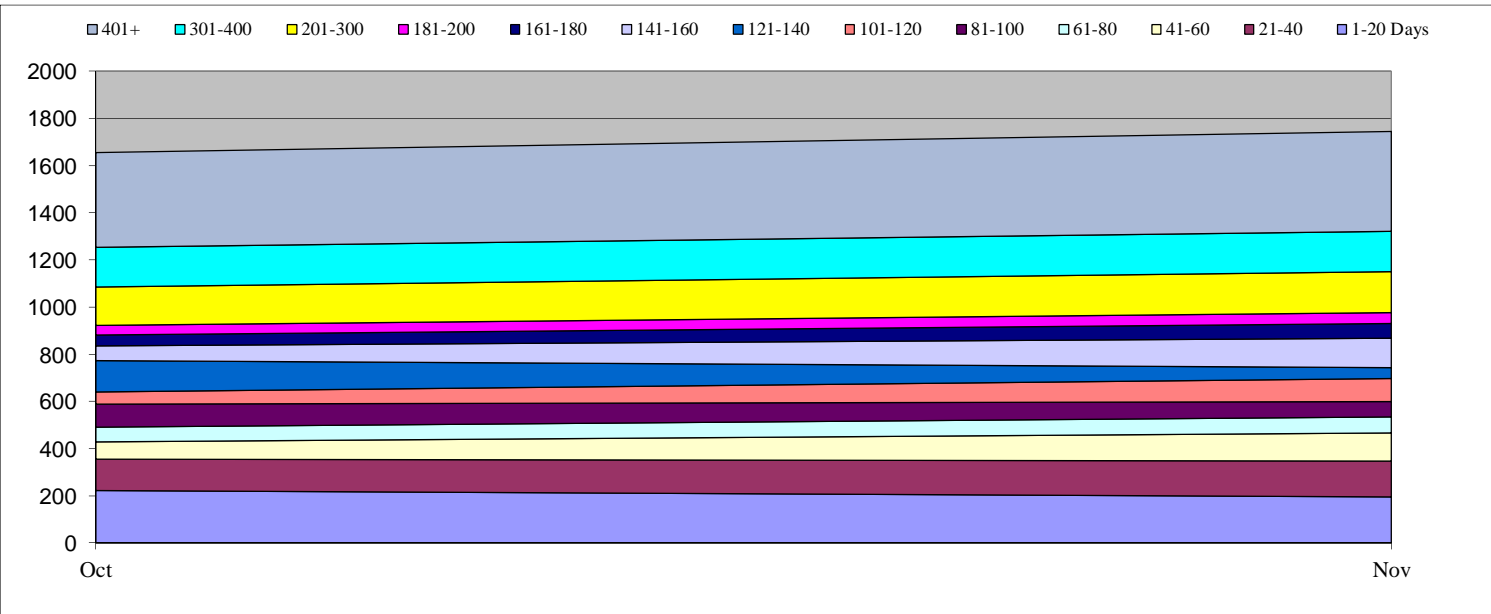
Monthly Production Rates

	Oct	Nov	Dec	Jan	Feb	Mar	Apr	May	June	Jul	Aug	Sep
Received	274	228										
Processed	160	115										



Days Pending for Open Cases

	Oct	Nov	Dec	Jan	Feb	Mar	Apr	May	June	Jul	Aug	Sep
1-20 Days	222	196										
21-40	134	151										
41-60	73	120										
61-80	62	66										
81-100	97	66										
101-120	53	98										
121-140	132	45										
141-160	61	127										
161-180	47	61										
181-200	40	47										
201-300	163	173										
301-400	169	170										
401+	403	425										
Total	1,656	1,745	0	0	0	0	0	0	0	0	0	0



Federal Emergency Management Agency (FEMA)

Total Open:839

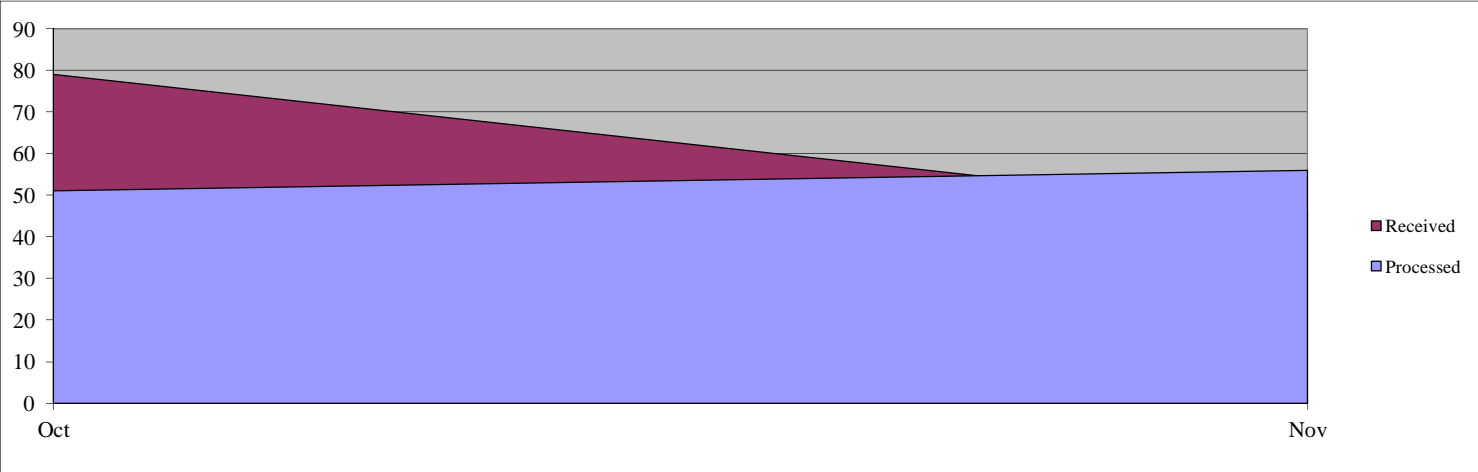
Total Received:125

Backlog:788

Total Processed:107

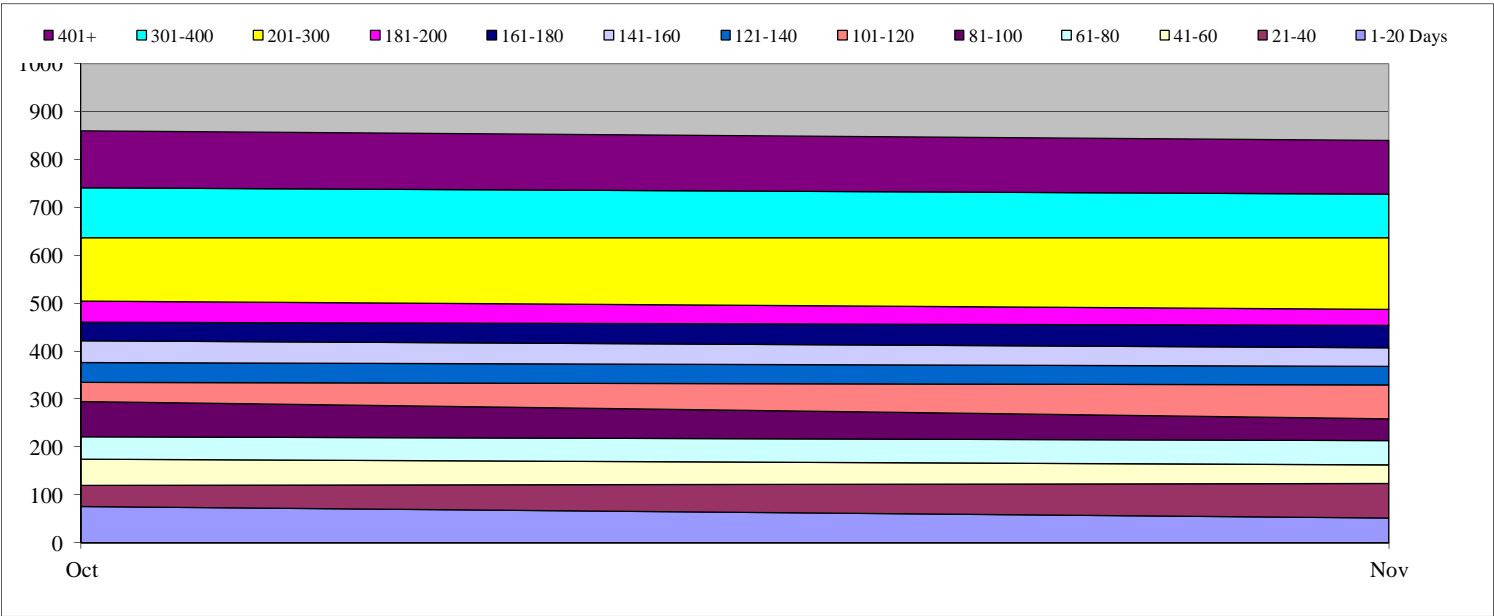
Monthly Production Rates

	Oct	Nov	Dec	Jan	Feb	Mar	Apr	May	June	Jul	Aug	Sep
Received	79	46										
Processed	51	56										



Days Pending for Open Cases

	Oct	Nov	Dec	Jan	Feb	Mar	Apr	May	June	Jul	Aug	Sep
1-20 Days	75	51										
21-40	45	72										
41-60	54	40										
61-80	47	50										
81-100	74	45										
101-120	40	71										
121-140	41	39										
141-160	45	39										
161-180	39	46										
181-200	44	34										
201-300	132	149										
301-400	105	91										
401+	118	112										
Total	859	839	0	0	0	0	0	0	0	0	0	0



Federal Law Enforcement Training Center (FLETC)

Total Open:10

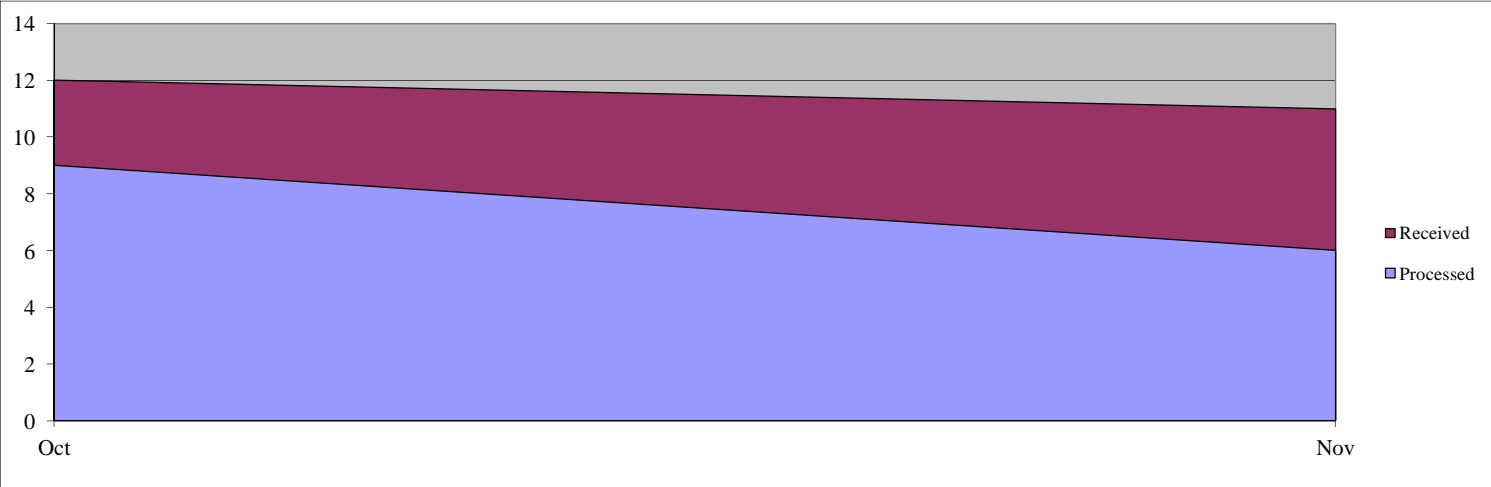
Total Received:23

Backlog:2

Total Processed:15

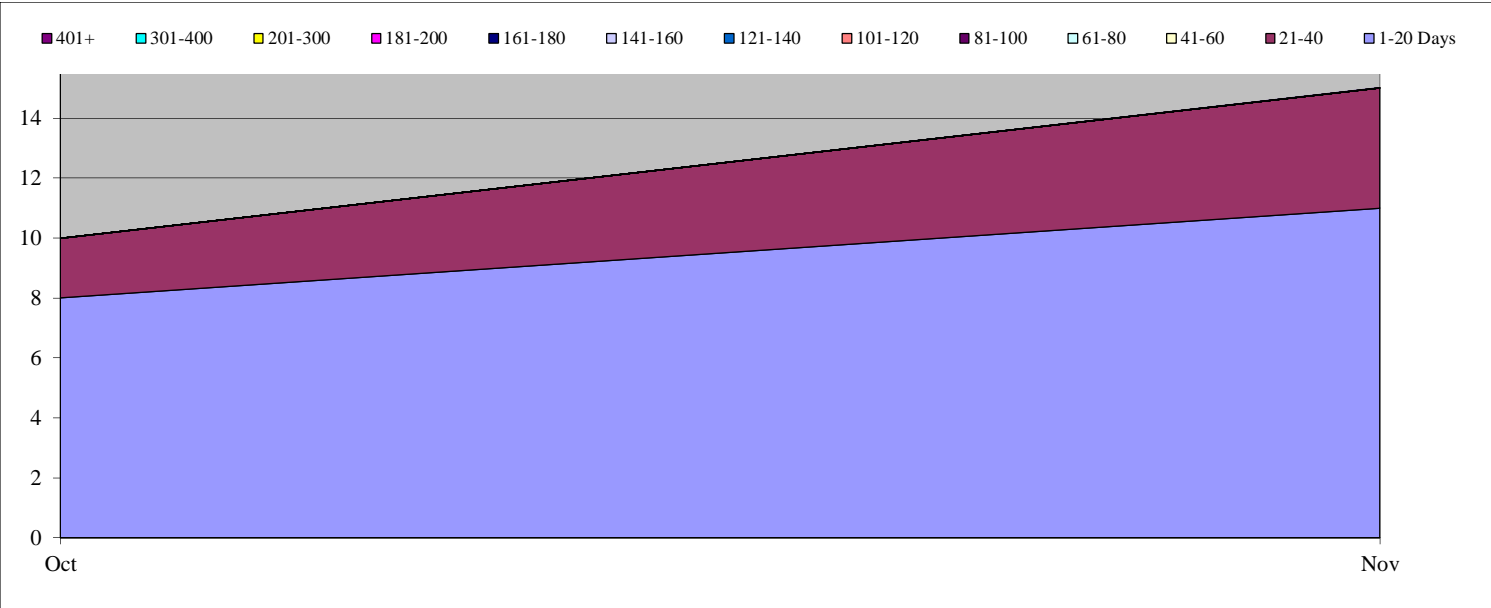
Monthly Production Rates

	Oct	Nov	Dec	Jan	Feb	Mar	Apr	May	June	Jul	Aug	Sep
Received	12	11										
Processed	9	6										



Days Pending for Open Cases

	Oct	Nov	Dec	Jan	Feb	Mar	Apr	May	June	Jul	Aug	Sep
1-20 Days	8	11										
21-40	2	4										
41-60	0	0										
61-80	0	0										
81-100	0	0										
101-120	0	0										
121-140	0	0										
141-160	0	0										
161-180	0	0										
181-200	0	0										
201-300	0	0										
301-400	0	0										
401+	0	0										
Total	10	15	0	0	0	0	0	0	0	0	0	0



Immigration and Customs Enforcement (ICE)

Total Open: 57,403

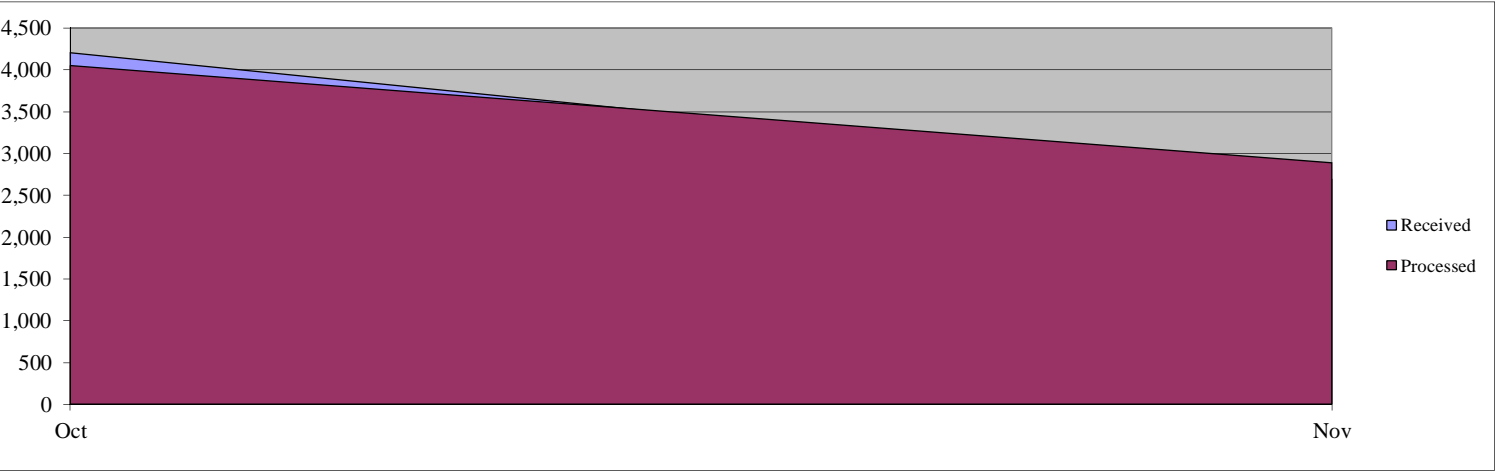
Total Received: 6,892

Backlog: 56,968

Total Processed: 6,936

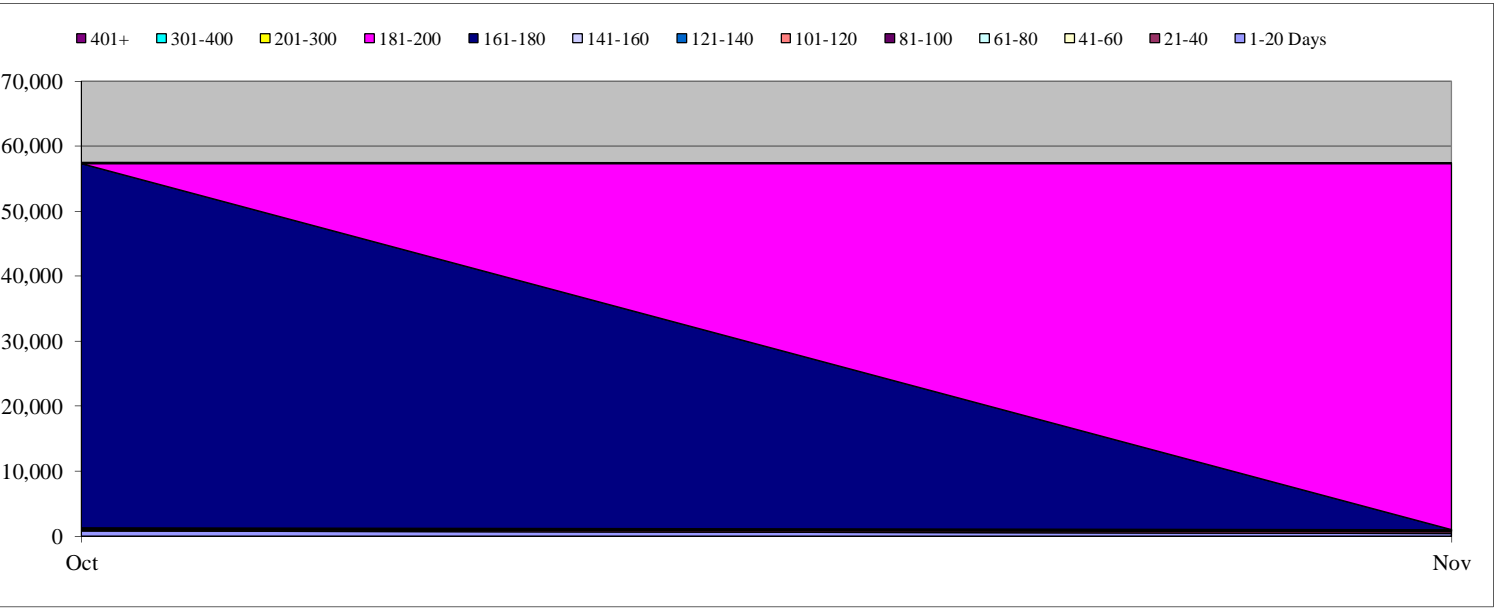
Monthly Production Rates

	Oct	Nov	Dec	Jan	Feb	Mar	Apr	May	June	Jul	Aug	Sep
Received	4,206	2,686										
Processed	4,048	2,888										



Days Pending for Open Cases

	Oct	Nov	Dec	Jan	Feb	Mar	Apr	May	June	Jul	Aug	Sep
1-20 Days	781	435										
21-40	220	283										
41-60	102	81										
61-80	68	60										
81-100	44	55										
101-120	30	39										
121-140	42	24										
141-160	29	35										
161-180	56,017	25										
181-200	19	56,278										
201-300	59	69										
301-400	43	11										
401+	6	8										
Total	57,460	57,403	0	0	0	0	0	0	0	0	0	0



Office of the Inspector General (OIG)

Total Open:81

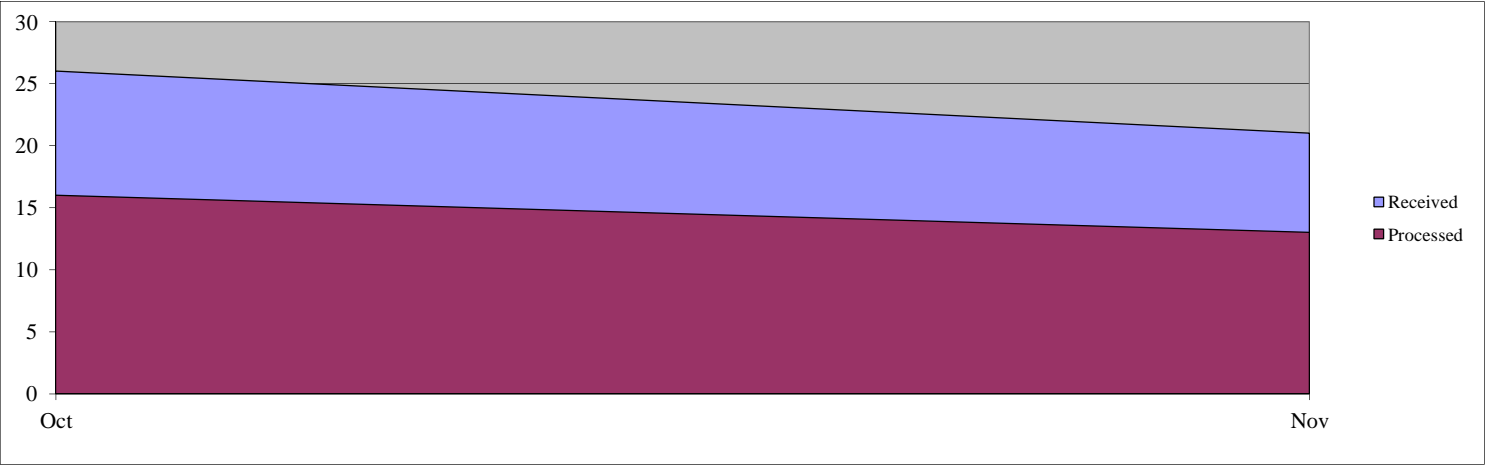
Total Received:47

Backlog:64

Total Processed:29

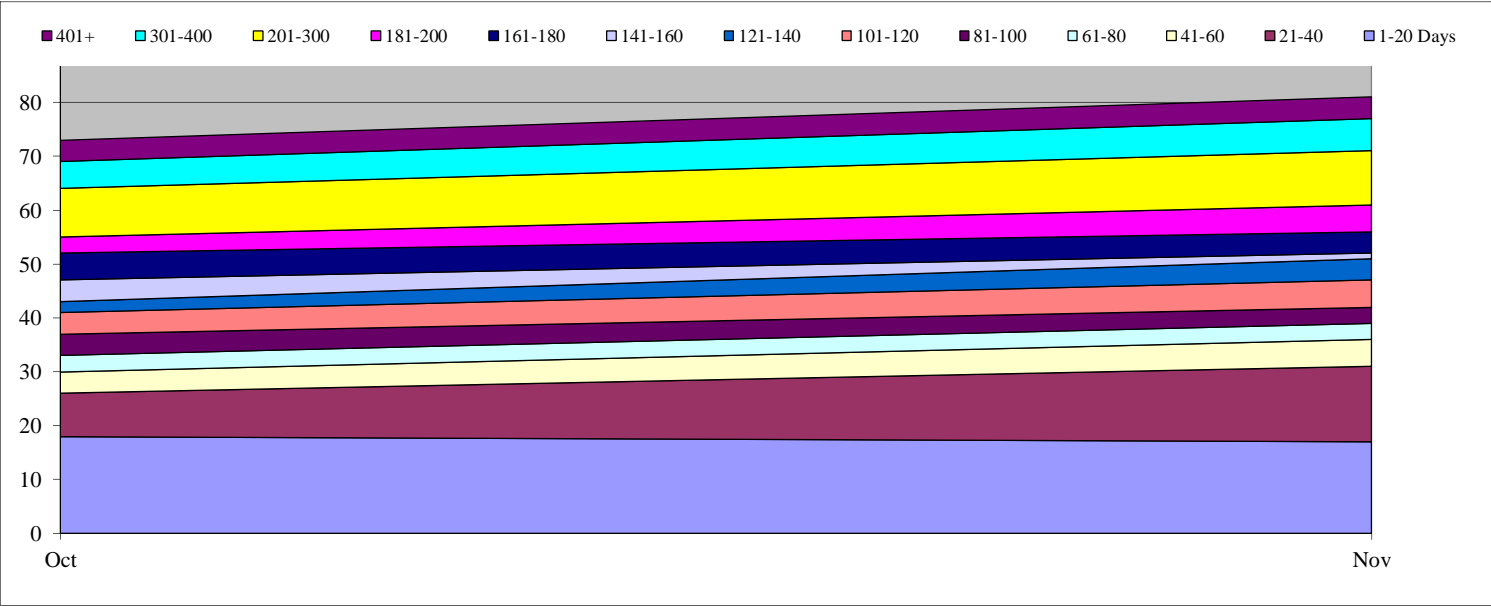
Monthly Production Rates

	Oct	Nov	Dec	Jan	Feb	Mar	Apr	May	June	Jul	Aug	Sep
Received	26	21										
Processed	16	13										



Days Pending for Open Cases

	Oct	Nov	Dec	Jan	Feb	Mar	Apr	May	June	Jul	Aug	Sep
1-20 Days	18	17										
21-40	8	14										
41-60	4	5										
61-80	3	3										
81-100	4	3										
101-120	4	5										
121-140	2	4										
141-160	4	1										
161-180	5	4										
181-200	3	5										
201-300	9	10										
301-400	5	6										
401+	4	4										
Total	73	81	0	0	0	0	0	0	0	0	0	0

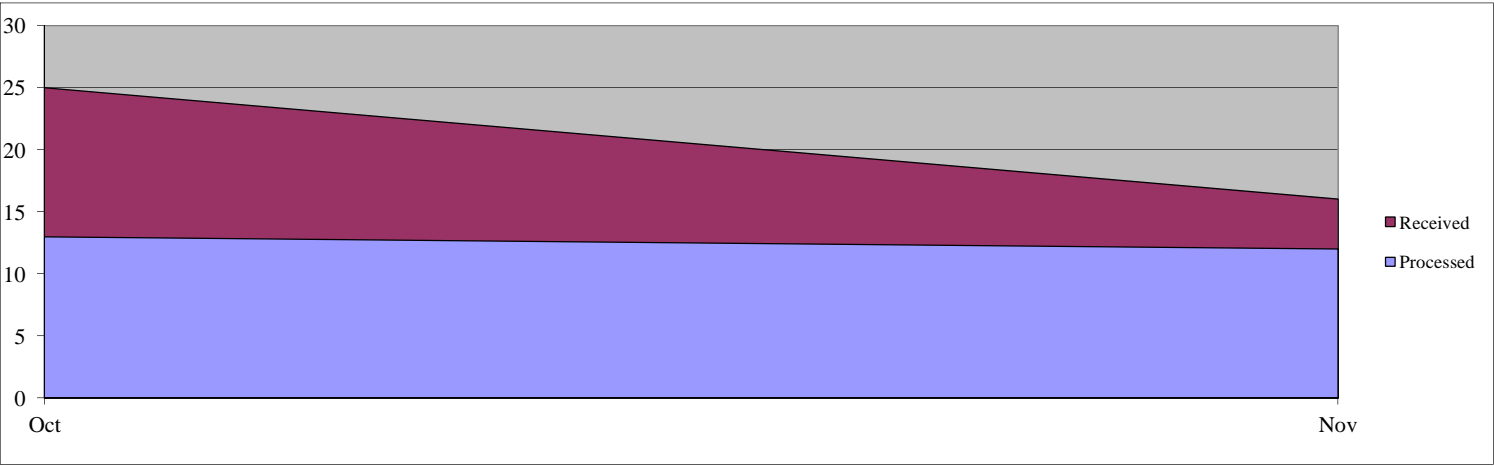


Office of Intelligence and Analysis (I&A)

Total Open:	33	Total Received:	41	Backlog:	17
		Total Processed:	25		

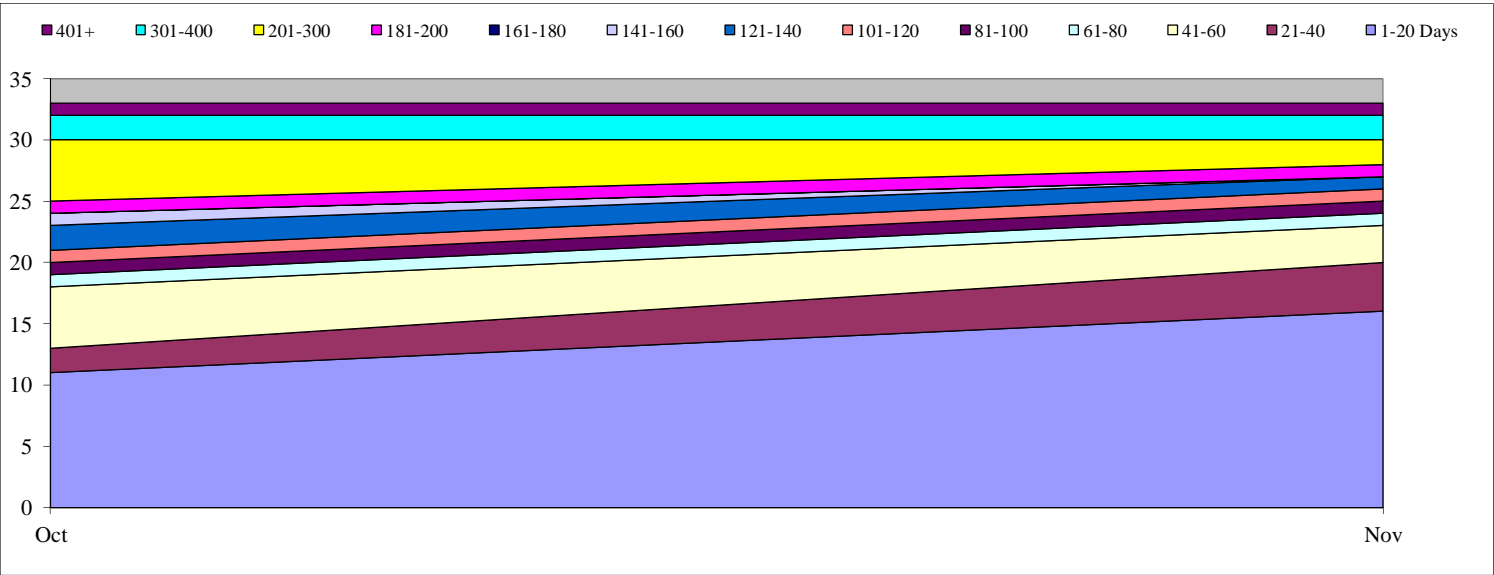
Monthly Production Rates

	Oct	Nov	Dec	Jan	Feb	Mar	Apr	May	June	Jul	Aug	Sep
Received	25	16										
Processed	13	12										



Days Pending for Open Cases

	Oct	Nov	Dec	Jan	Feb	Mar	Apr	May	June	Jul	Aug	Sep
1-20 Days	11	16										
21-40	2	4										
41-60	5	3										
61-80	1	1										
81-100	1	1										
101-120	1	1										
121-140	2	1										
141-160	1	0										
161-180	0	0										
181-200	1	1										
201-300	5	2										
301-400	2	2										
401+	1	1										
Total	33	33	0	0	0	0	0	0	0	0	0	0



Operations Directorate (OPS)

Total Open:2

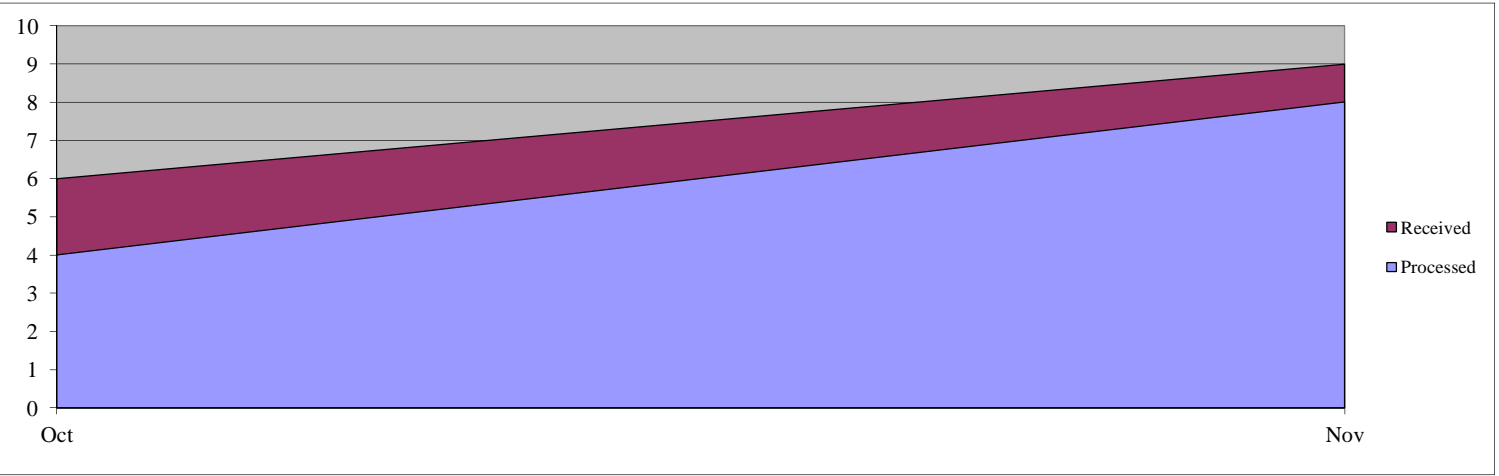
Total Received:15

Backlog:0

Total Processed:12

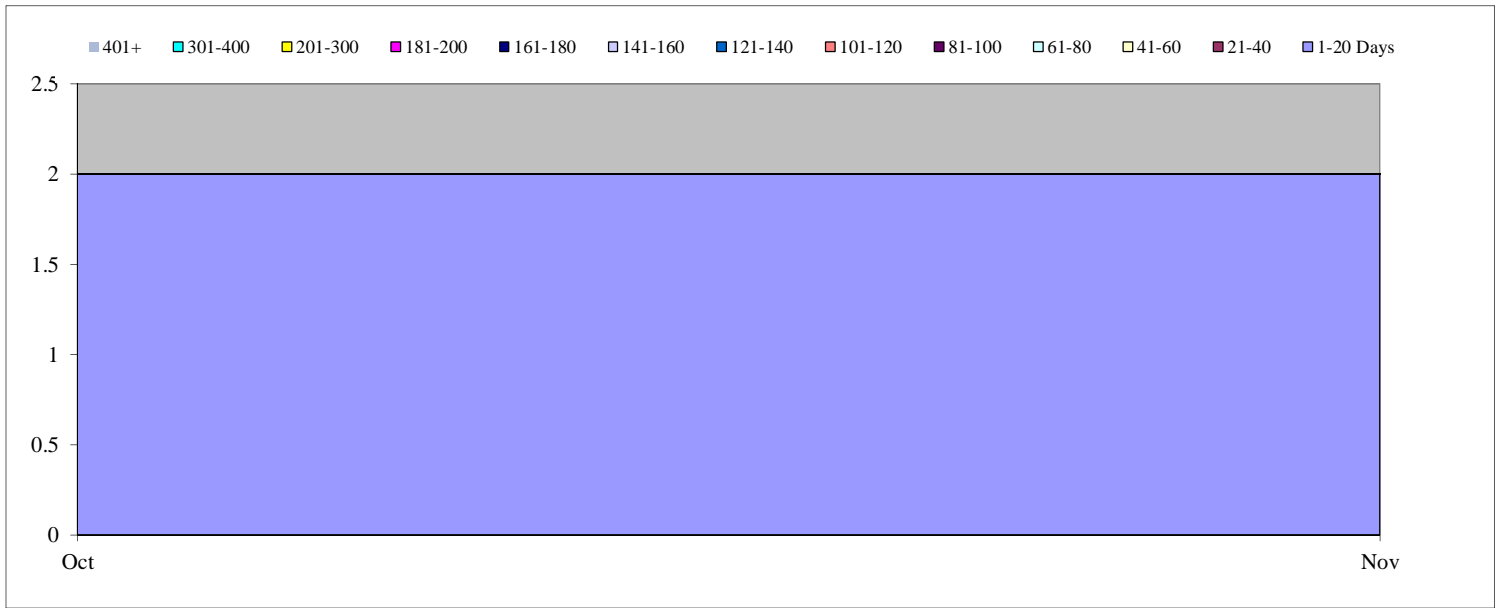
Monthly Production Rates

	Oct	Nov	Dec	Jan	Feb	Mar	Apr	May	June	Jul	Aug	Sep
Received	6	9										
Processed	4	8										



Days Pending for Open Cases

	Oct	Nov	Dec	Jan	Feb	Mar	Apr	May	June	Jul	Aug	Sep
1-20 Days	2	2										
21-40	0	0										
41-60	0	0										
61-80	0	0										
81-100	0	0										
101-120	0	0										
121-140	0	0										
141-160	0	0										
161-180	0	0										
181-200	0	0										
201-300	0	0										
301-400	0	0										
401+	0	0										
Total	2	2	0	0	0	0	0	0	0	0	0	0



Science and Technology Directorate (S&T)

Total Open:7

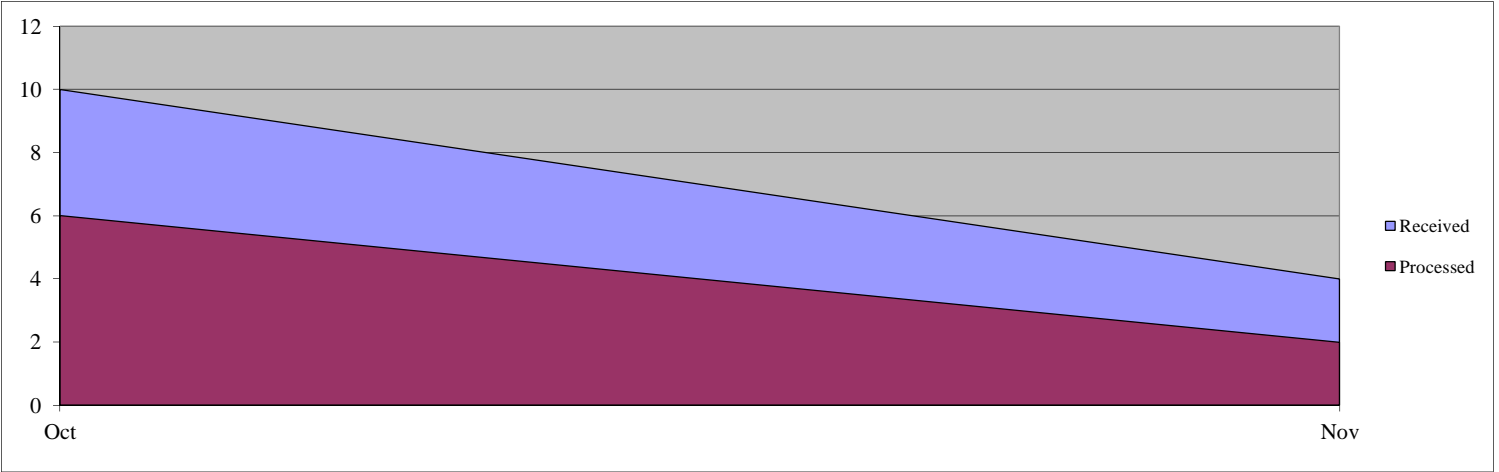
Total Received:14

Backlog:4

Total Processed:8

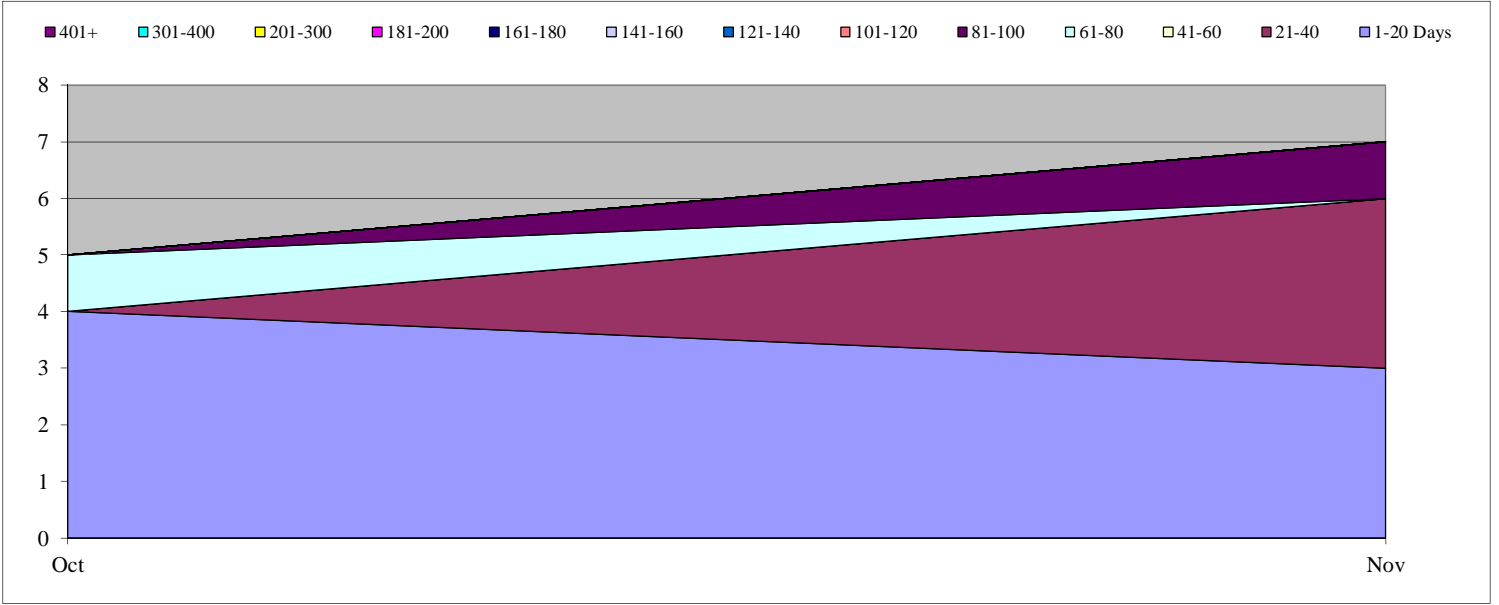
Monthly Production Rates

	Oct	Nov	Dec	Jan	Feb	Mar	Apr	May	June	Jul	Aug	Sep
Received	10	4										
Processed	6	2										



Days Pending for Open Cases

	Oct	Nov	Dec	Jan	Feb	Mar	Apr	May	June	Jul	Aug	Sep
1-20 Days	4	3										
21-40	0	3										
41-60	0	0										
61-80	1	0										
81-100	0	1										
101-120	0	0										
121-140	0	0										
141-160	0	0										
161-180	0	0										
181-200	0	0										
201-300	0	0										
301-400	0	0										
401+	0	0										
Total	5	7	0	0	0	0	0	0	0	0	0	0



U.S. Secret Service (USSS)

Total Open:913

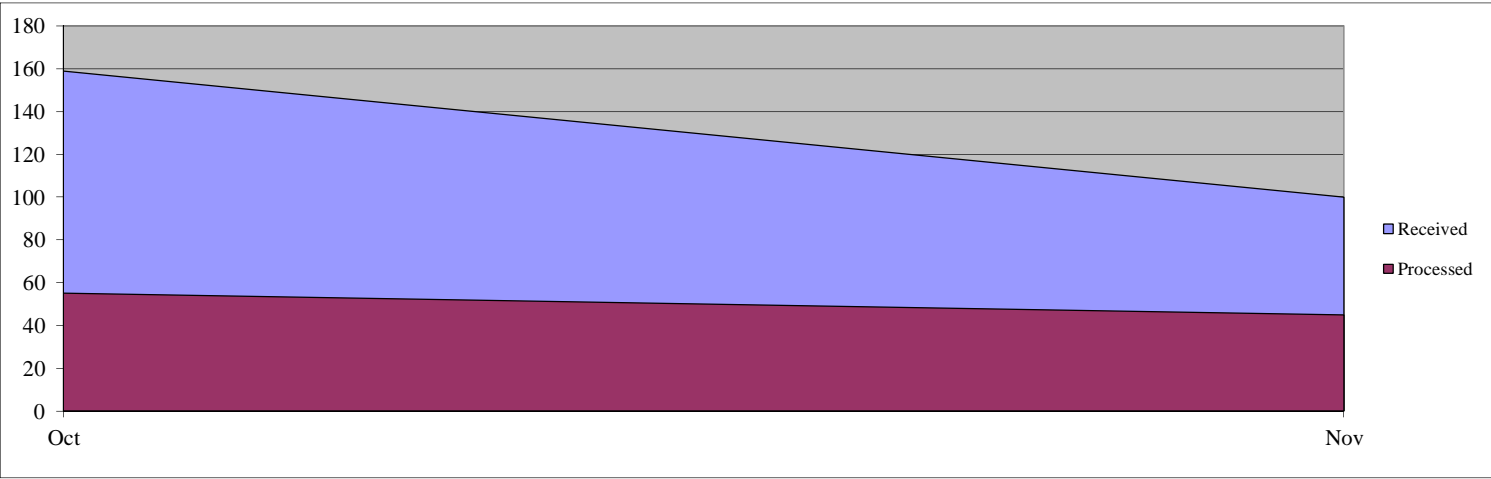
Total Received:259

Backlog:797

Total Processed:100

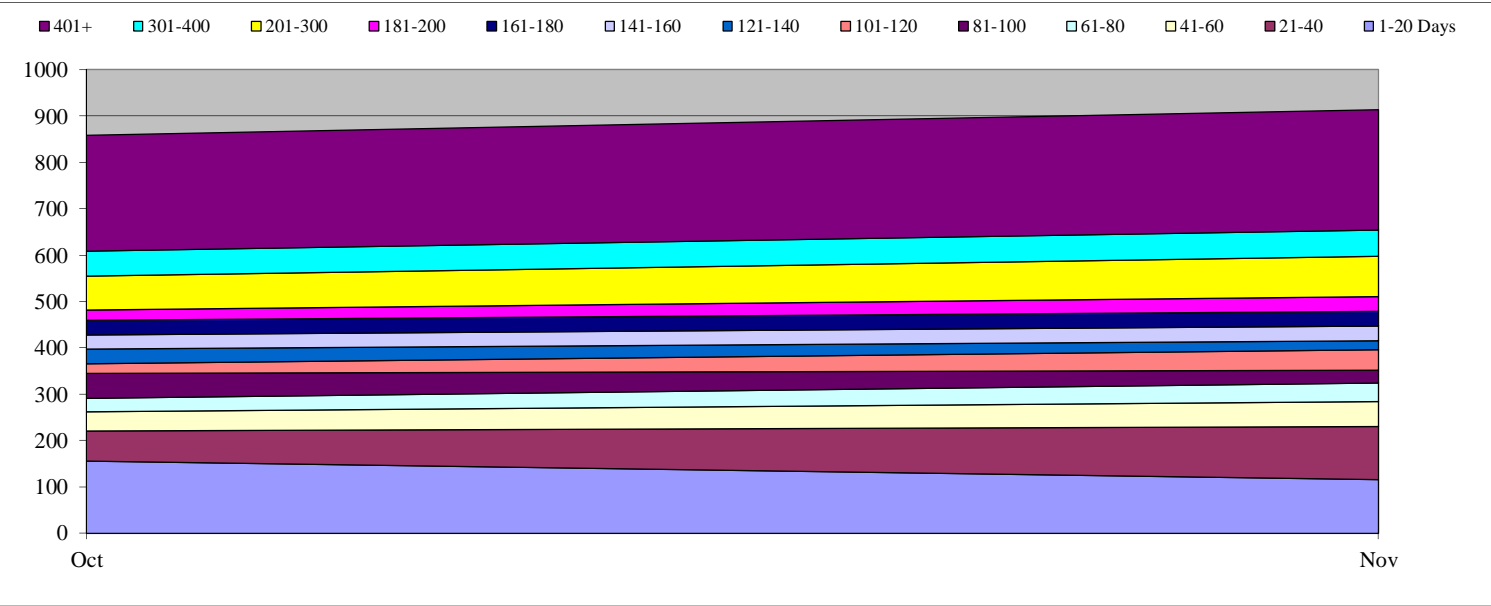
Monthly Production Rates

	Oct	Nov	Dec	Jan	Feb	Mar	Apr	May	June	Jul	Aug	Sep
Received	159	100										
Processed	55	45										



Days Pending for Open Cases

	Oct	Nov	Dec	Jan	Feb	Mar	Apr	May	June	Jul	Aug	Sep
1-20 Days	156	116										
21-40	65	114										
41-60	41	54										
61-80	29	40										
81-100	53	27										
101-120	22	45										
121-140	31	19										
141-160	31	32										
161-180	31	32										
181-200	23	31										
201-300	73	87										
301-400	54	57										
401+	250	259										
Total	859	913	0	0	0	0	0	0	0	0	0	0



Transportation Security Administration (TSA)

Total Open:987

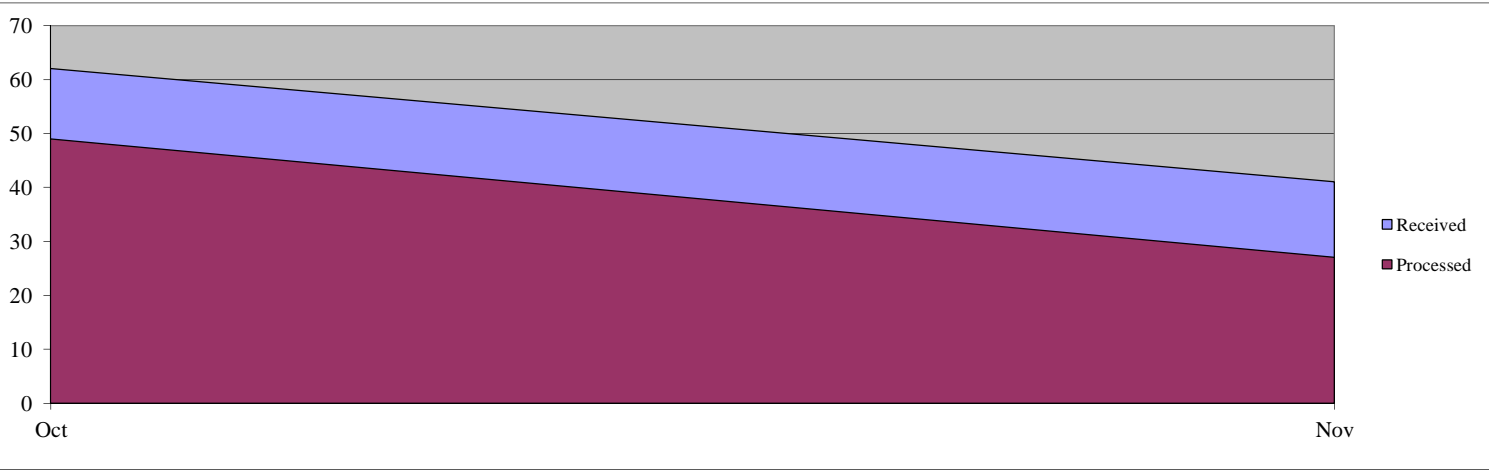
Total Received:103

Backlog:934

Total Processed:76

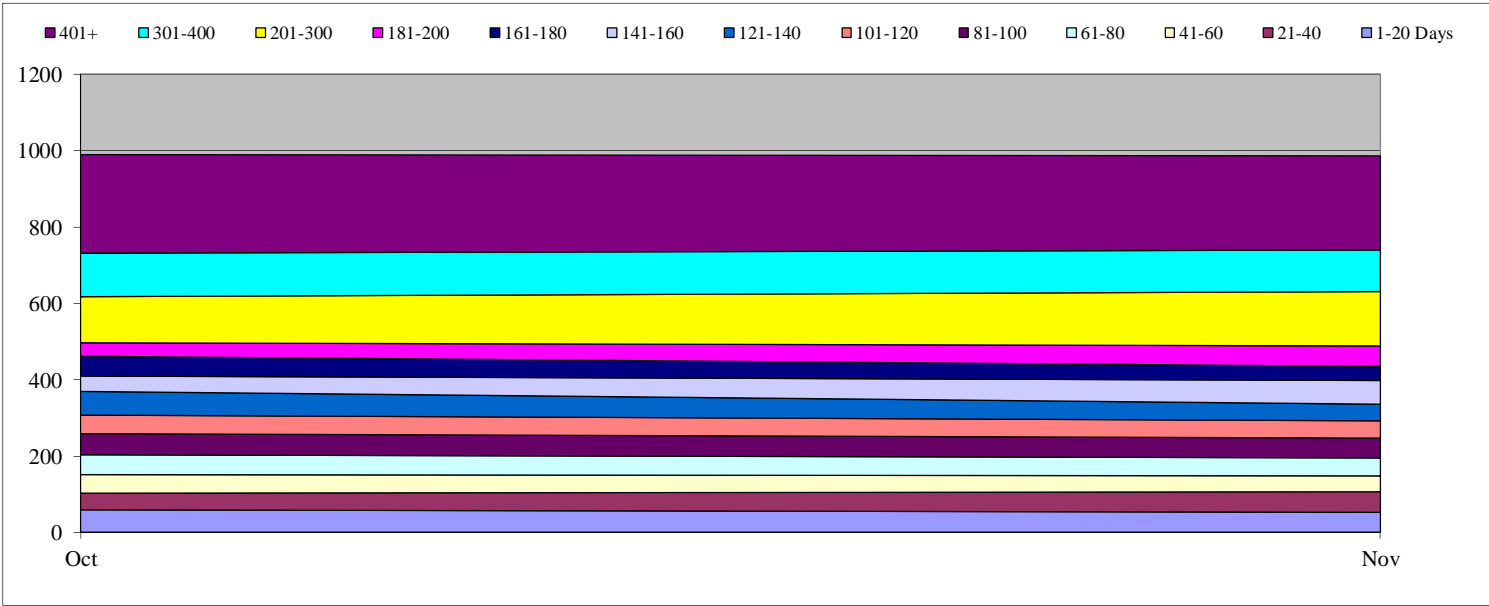
Monthly Production Rates

	Oct	Nov	Dec	Jan	Feb	Mar	Apr	May	June	Jul	Aug	Sep
Received	62	41										
Processed	49	27										



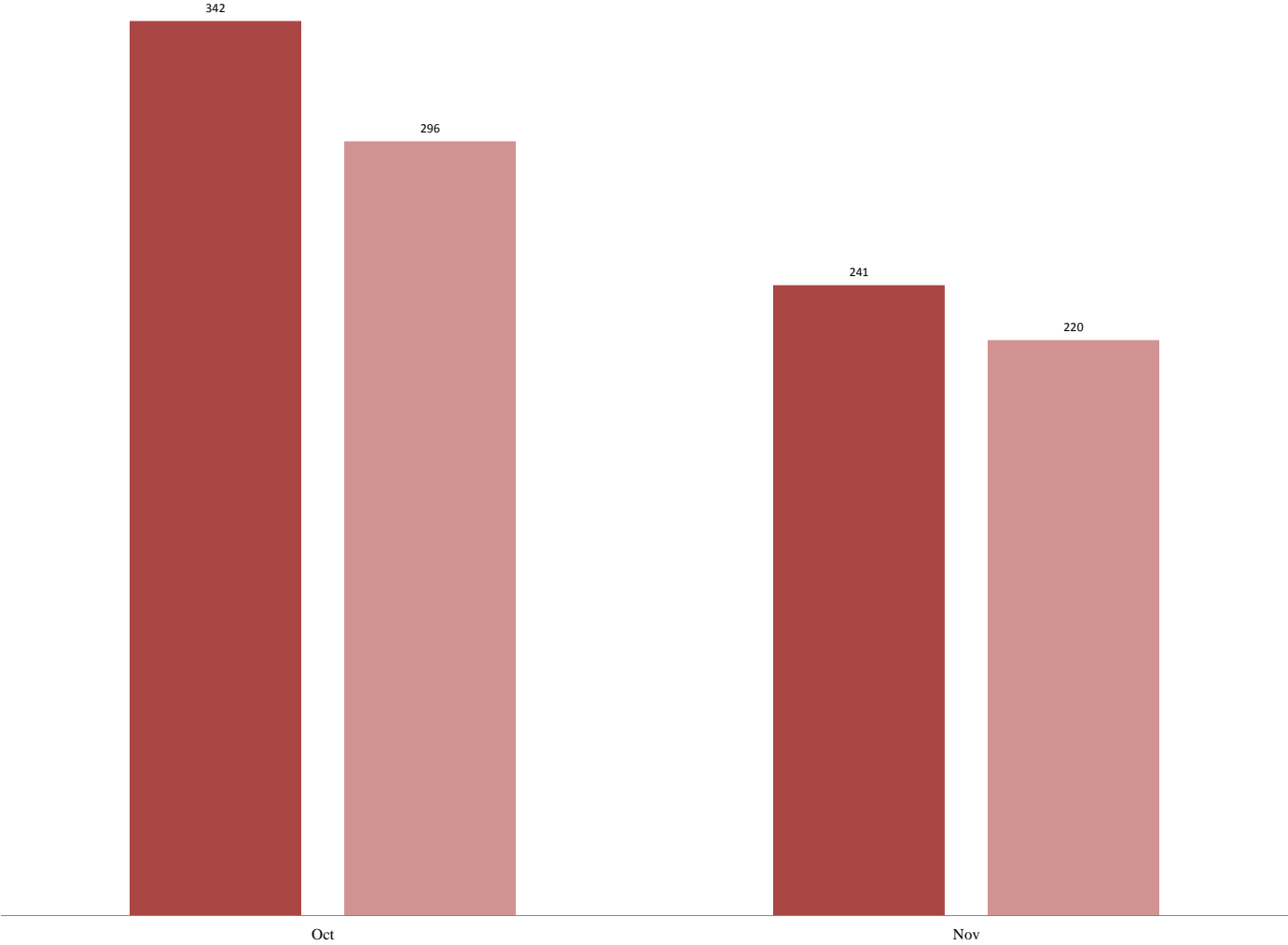
Days Pending for Open Cases

	Oct	Nov	Dec	Jan	Feb	Mar	Apr	May	June	Jul	Aug	Sep
1-20 Days	60	53										
21-40	42	54										
41-60	49	41										
61-80	53	47										
81-100	55	52										
101-120	49	45										
121-140	62	43										
141-160	39	63										
161-180	53	37										
181-200	34	53										
201-300	122	143										
301-400	114	109										
401+	257	247										
Total	989	987	0	0	0	0	0	0	0	0	0	0

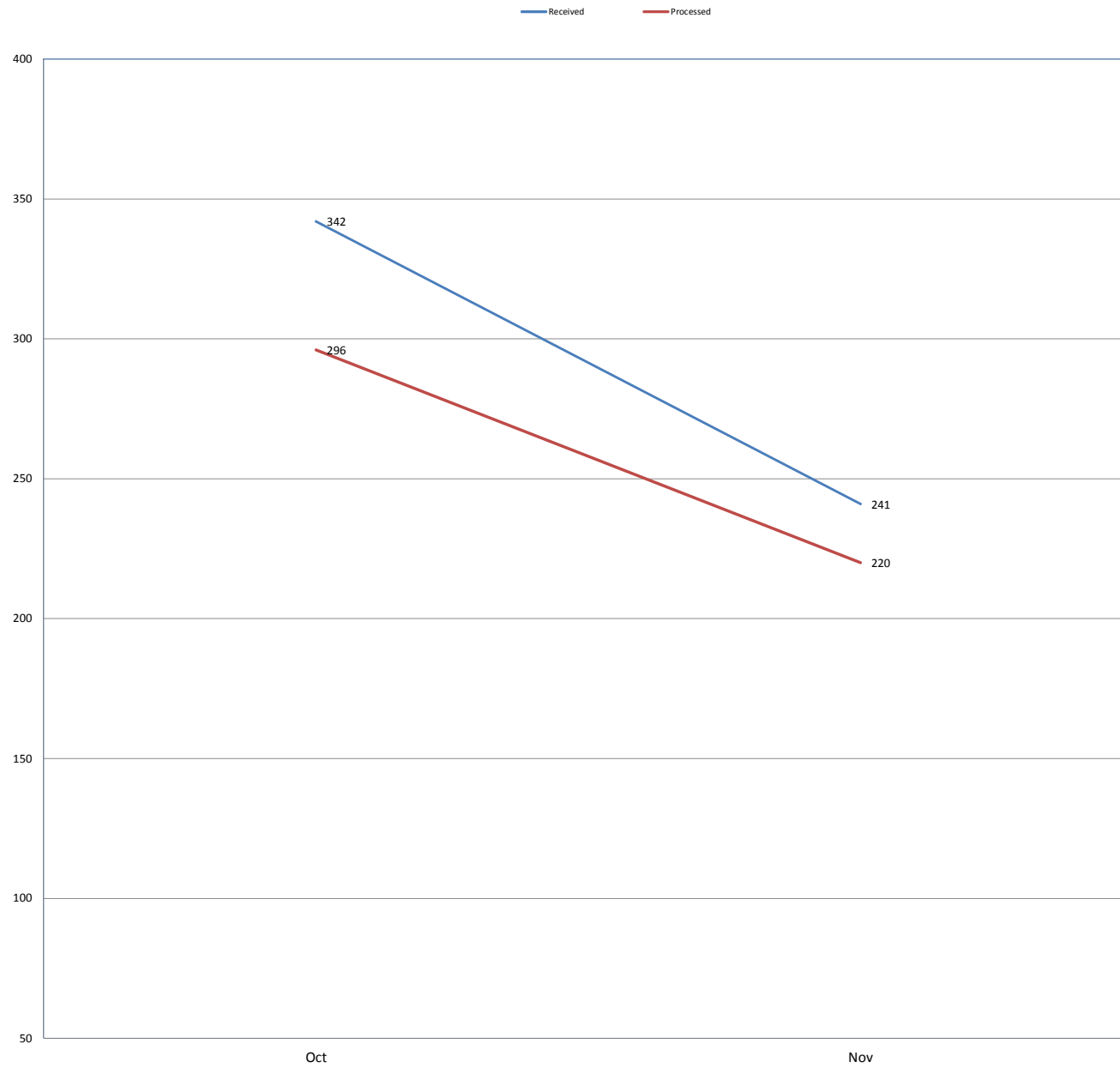


Composite DHS Monthly Production Rated - Appeals

Received Processed

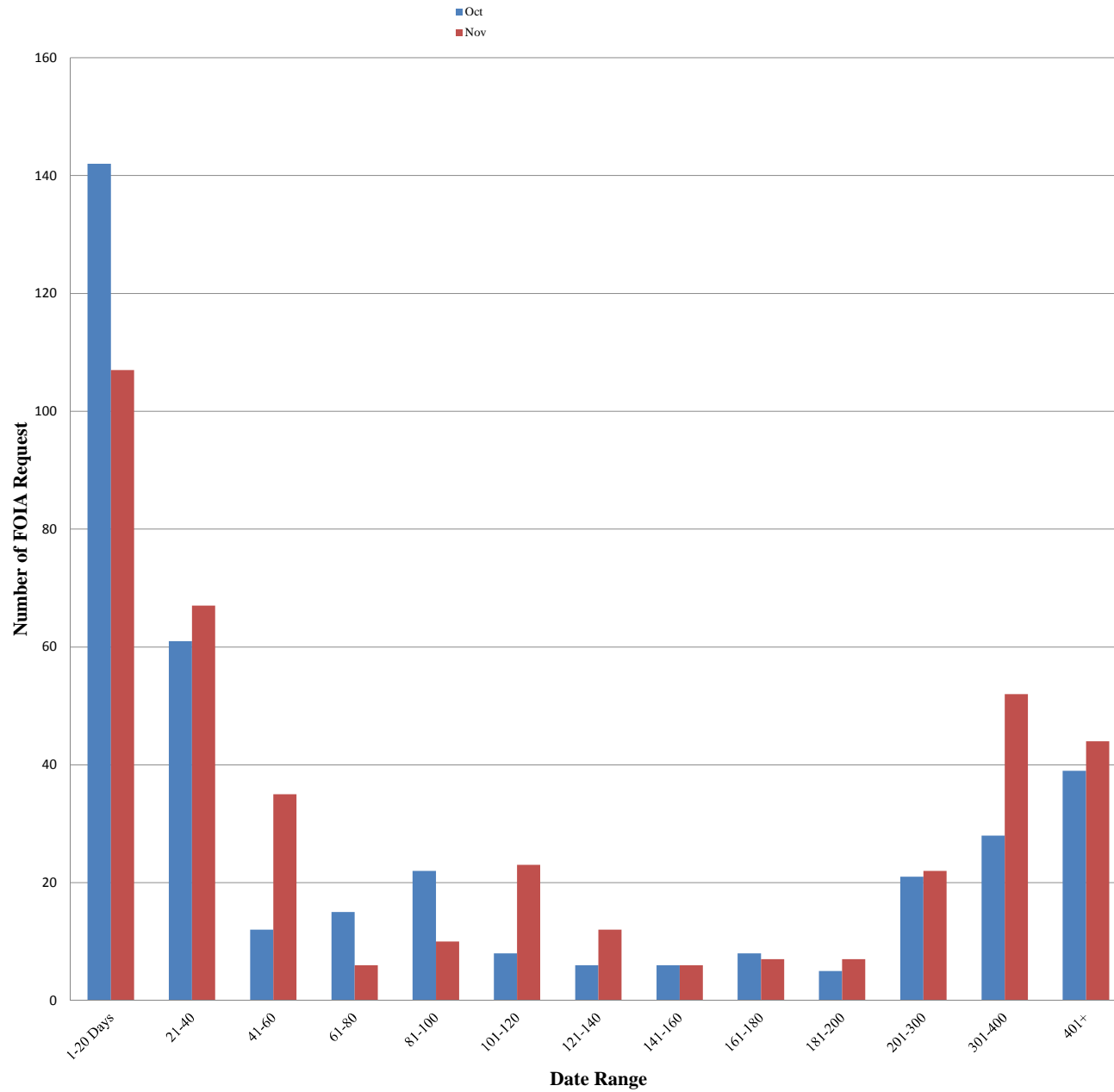


Composite DHS Monthly Production Rates - Appeals



The data contained in this report is draft and posted publicly as a matter of administrative discretion

Composite Pending Age of DHS Administrative Appeals

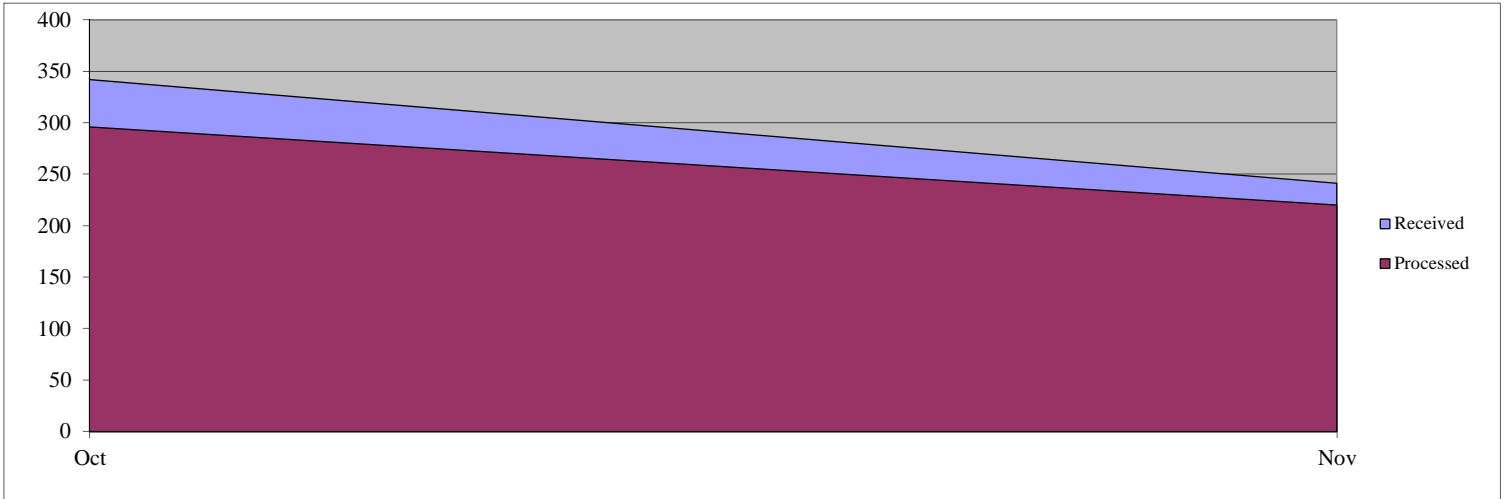


The data contained in this report is draft and posted publicly as a matter of administrative discretion

Composite Department of Homeland Security (DHS) - Administrative Appeals

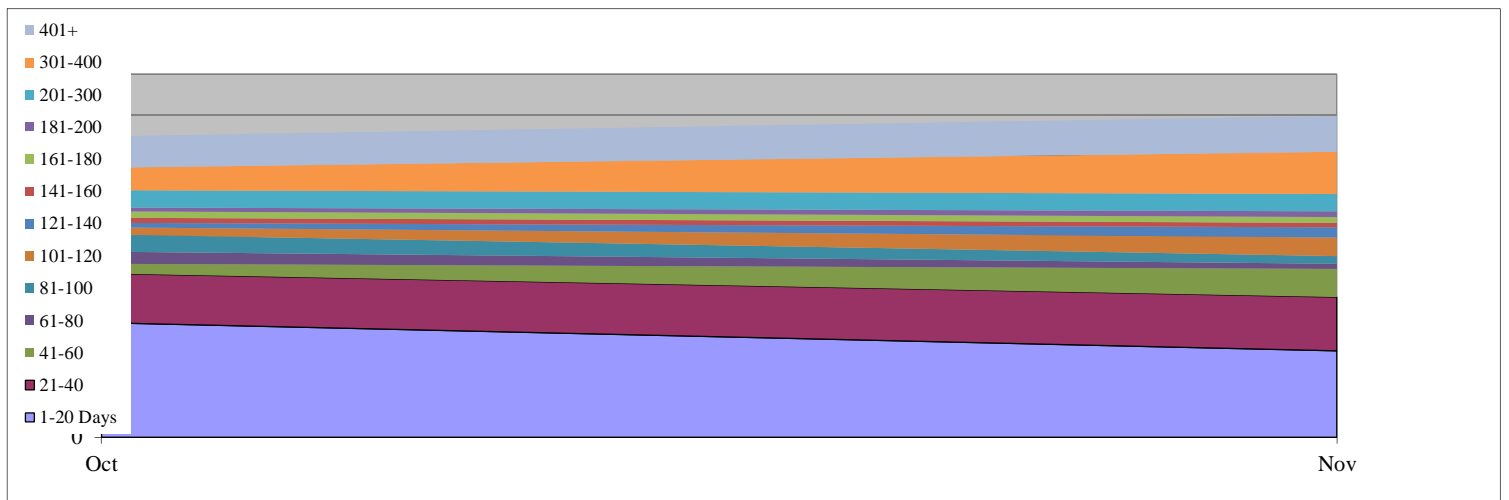
Appeals Monthly Production Rates

	Total Received			583			Total Processed			516		
	Oct	Nov	Dec	Jan	Feb	Mar	Apr	May	June	Jul	Aug	Sep
Received	342	241	0	0	0	0	0	0	0	0	0	0
Processed	296	220	0	0	0	0	0	0	0	0	0	0



Days Pending for Open Appeals

	Oct	Nov	Dec	Jan	Feb	Mar	Apr	May	June	Jul	Aug	Sep
1-20 Days	142	107	0	0	0	0	0	0	0	0	0	0
21-40	61	67	0	0	0	0	0	0	0	0	0	0
41-60	12	35	0	0	0	0	0	0	0	0	0	0
61-80	15	6	0	0	0	0	0	0	0	0	0	0
81-100	22	10	0	0	0	0	0	0	0	0	0	0
101-120	8	23	0	0	0	0	0	0	0	0	0	0
121-140	6	12	0	0	0	0	0	0	0	0	0	0
141-160	6	6	0	0	0	0	0	0	0	0	0	0
161-180	8	7	0	0	0	0	0	0	0	0	0	0
181-200	5	7	0	0	0	0	0	0	0	0	0	0
201-300	21	22	0	0	0	0	0	0	0	0	0	0
301-400	28	52	0	0	0	0	0	0	0	0	0	0
401+	39	44	0	0	0	0	0	0	0	0	0	0
Total	373	398	0	0	0	0	0	0	0	0	0	0



United States Customs and Border Protection (CBP)

Total Open:53

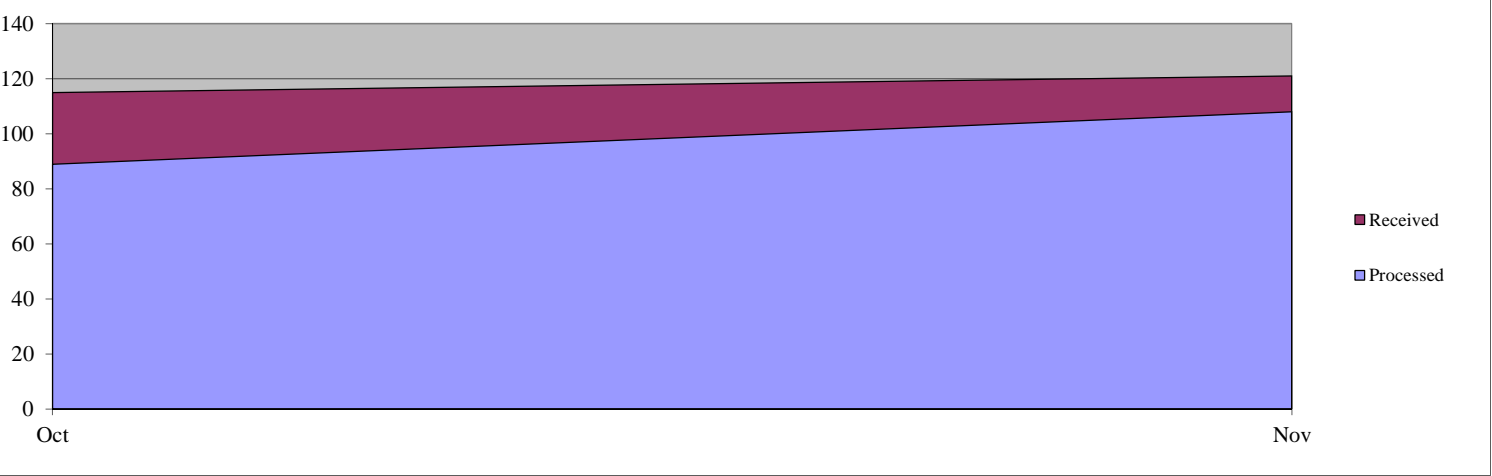
Total Received:236

Total Processed:197

Backlog:20

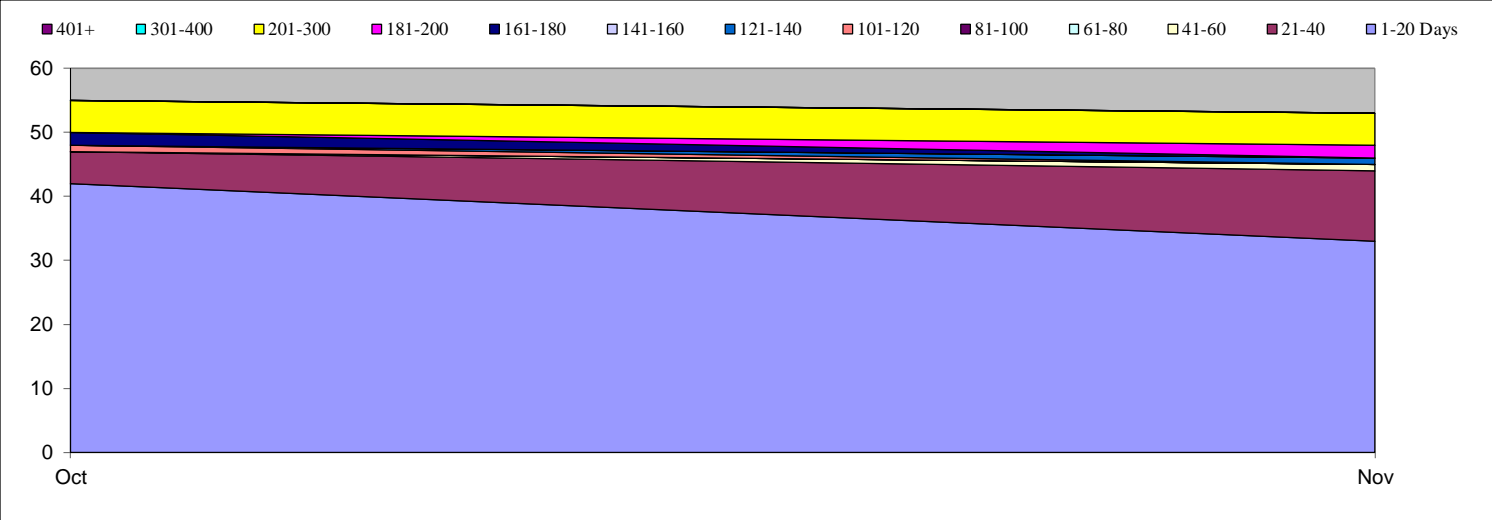
Appeals Monthly Production Rates

	Oct	Nov	Dec	Jan	Feb	Mar	Apr	May	June	Jul	Aug	Sep
Received	115	121										
Processed	89	108										



Days Pending for Open Cases

	Oct	Nov	Dec	Jan	Feb	Mar	Apr	May	June	Jul	Aug	Sep
1-20 Days	42	33										
21-40	5	11										
41-60	0	1										
61-80	0	0										
81-100	0	0										
101-120	1	0										
121-140	0	1										
141-160	0	0										
161-180	2	0										
181-200	0	2										
201-300	5	5										
301-400	0	0										
401+	0	0										
Total	55	53	0	0	0	0	0	0	0	0	0	0



Federal Law Enforcement Training Center (FLETC)

Total Open:0

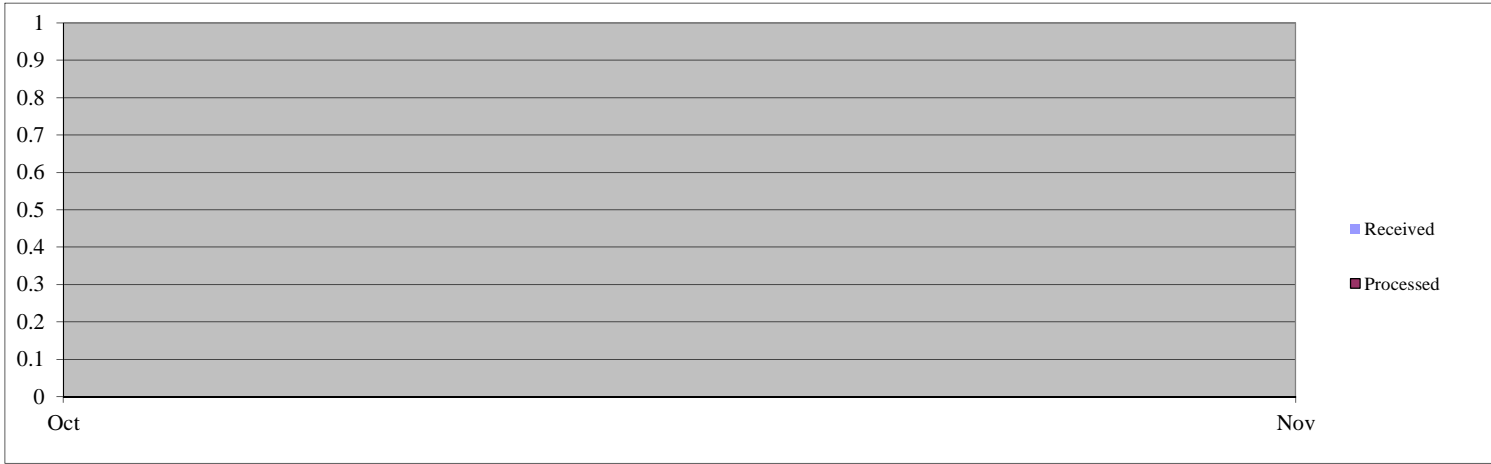
Total Received:0

Backlog:0

Total Processed:0

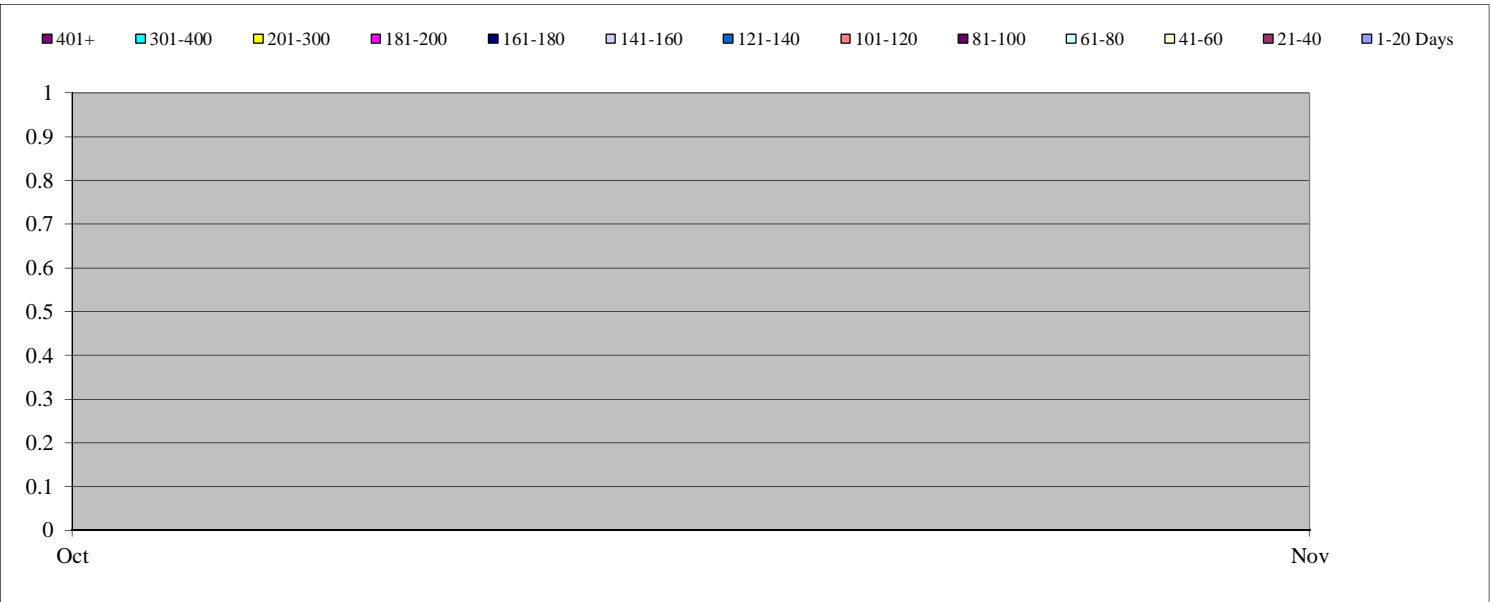
Appeals Monthly Production Rates

	Oct	Nov	Dec	Jan	Feb	Mar	Apr	May	June	Jul	Aug	Sep
Received	0											
Processed	0											



Days Pending for Open Cases

	Oct	Nov	Dec	Jan	Feb	Mar	Apr	May	June	Jul	Aug	Sep
1-20 Days	0											
21-40	0											
41-60	0											
61-80	0											
81-100	0											
101-120	0											
121-140	0											
141-160	0											
161-180	0											
181-200	0											
201-300	0											
301-400	0											
401+	0											
Total	0	0	0	0	0	0	0	0	0	0	0	0



Immigration and Customs Enforcement (ICE)

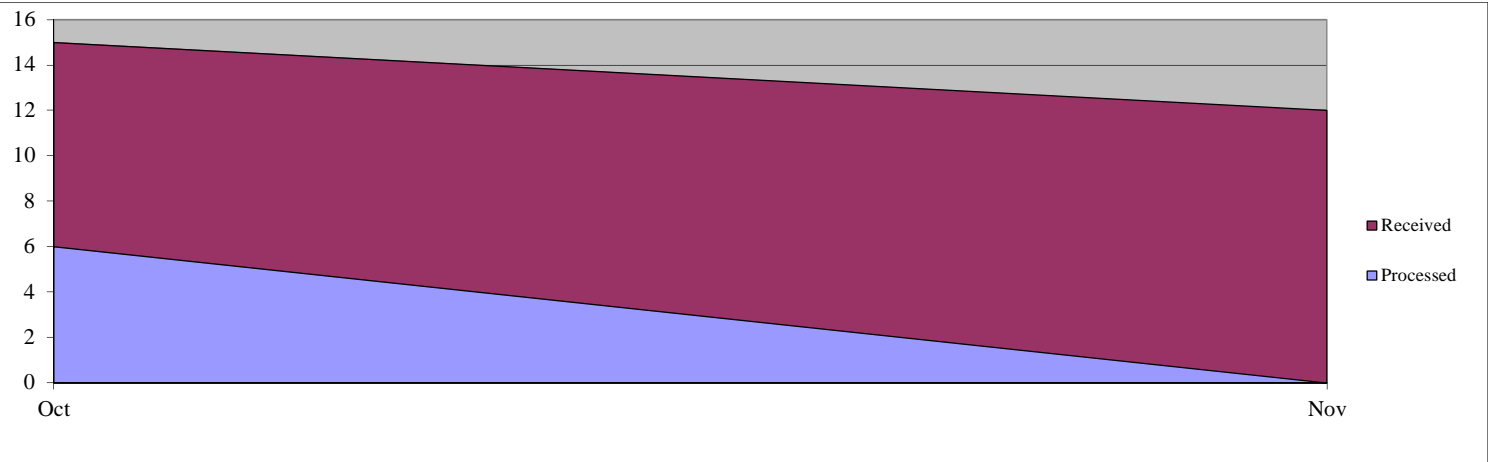
Total Open:159

Total Received:27
Total Processed:6

Backlog:147

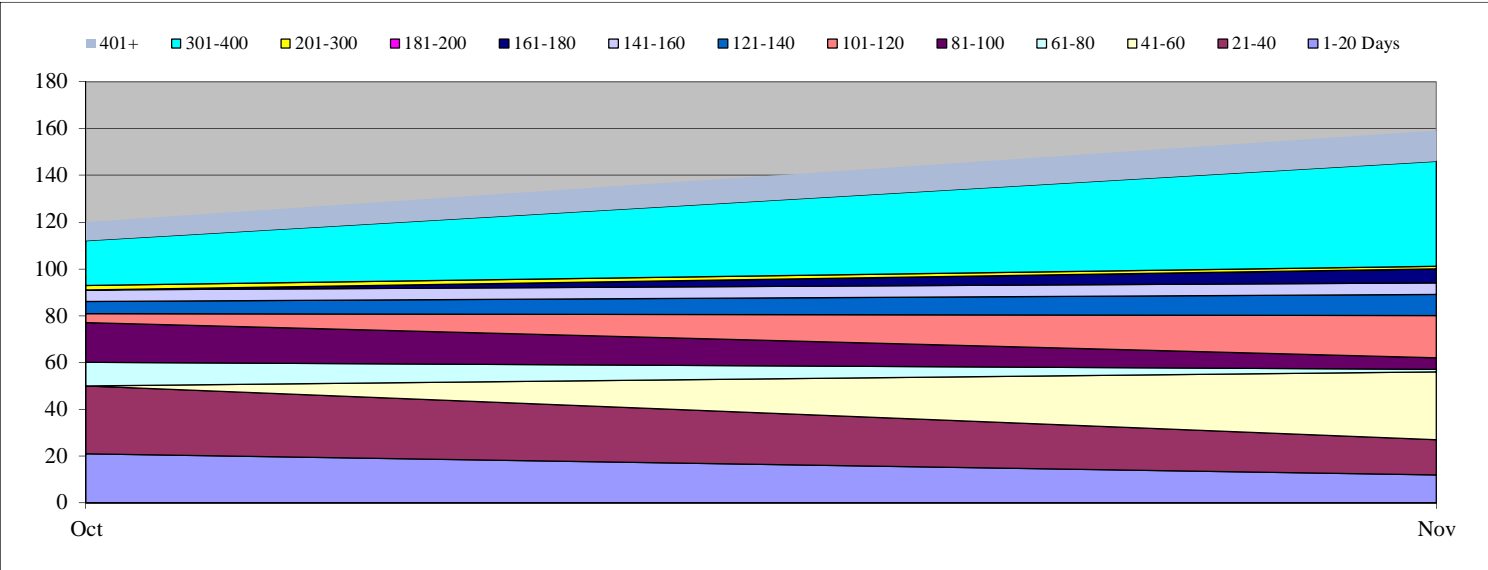
Appeals Monthly Production Rates

	Oct	Nov	Dec	Jan	Feb	Mar	Apr	May	June	Jul	Aug	Sep
Received	15	12										
Processed	6	0										



Days Pending for Open Cases

	Oct	Nov	Dec	Jan	Feb	Mar	Apr	May	June	Jul	Aug	Sep
1-20 Days	21	12										
21-40	29	15										
41-60	0	29										
61-80	10	1										
81-100	17	5										
101-120	4	18										
121-140	5	9										
141-160	5	5										
161-180	0	6										
181-200	0	0										
201-300	2	1										
301-400	19	45										
401+	8	13										
Total	120	159	0	0	0	0	0	0	0	0	0	0

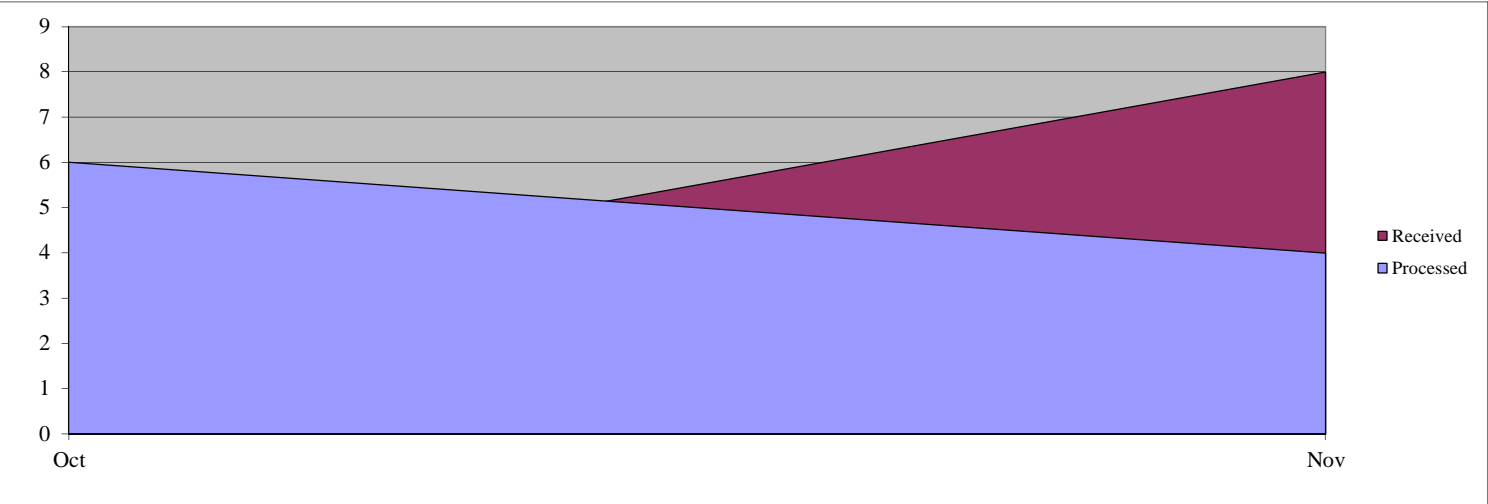


Office of the General Counsel (OGC)

Total Open:	18	Total Received:	11	Backlog:	10
		Total Processed	10		

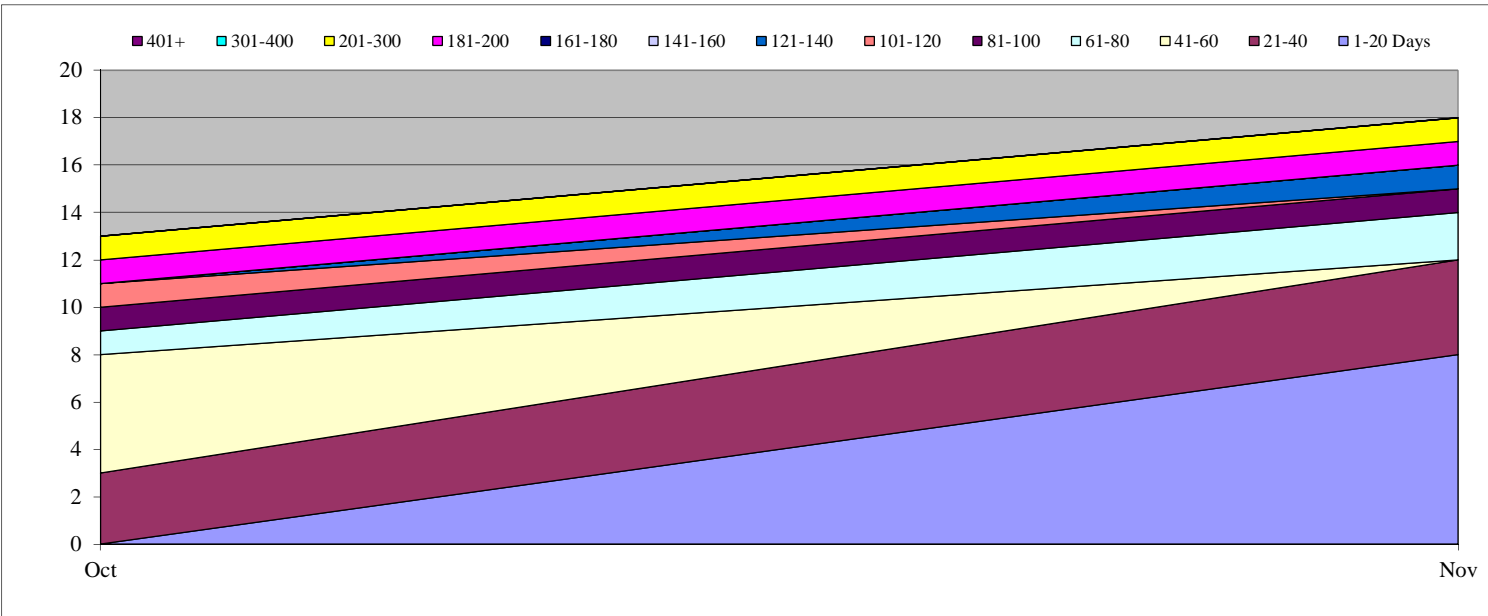
Appeals Monthly Production Rates

	Oct	Nov	Dec	Jan	Feb	Mar	Apr	May	June	Jul	Aug	Sep
Received	3	8										
Processed	6	4										



Days Pending for Open Cases

	Oct	Nov	Dec	Jan	Feb	Mar	Apr	May	June	Jul	Aug	Sep
1-20 Days	0	8										
21-40	3	4										
41-60	5	0										
61-80	1	2										
81-100	1	1										
101-120	1	0										
121-140	0	1										
141-160	0	0										
161-180	0	0										
181-200	1	1										
201-300	1	1										
301-400	0	0										
401+	0	0										
Total	13	18	0	0	0	0	0	0	0	0	0	0



Transportation Security Administration (TSA)

Total Open:4

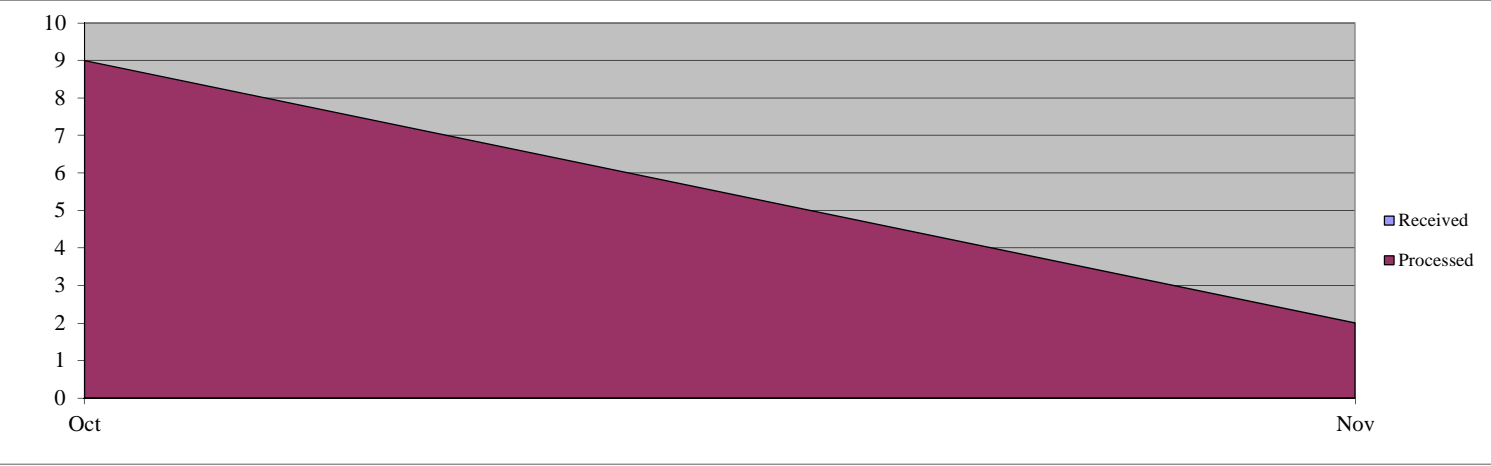
Total Received:2

Backlog:4

Total Processed:11

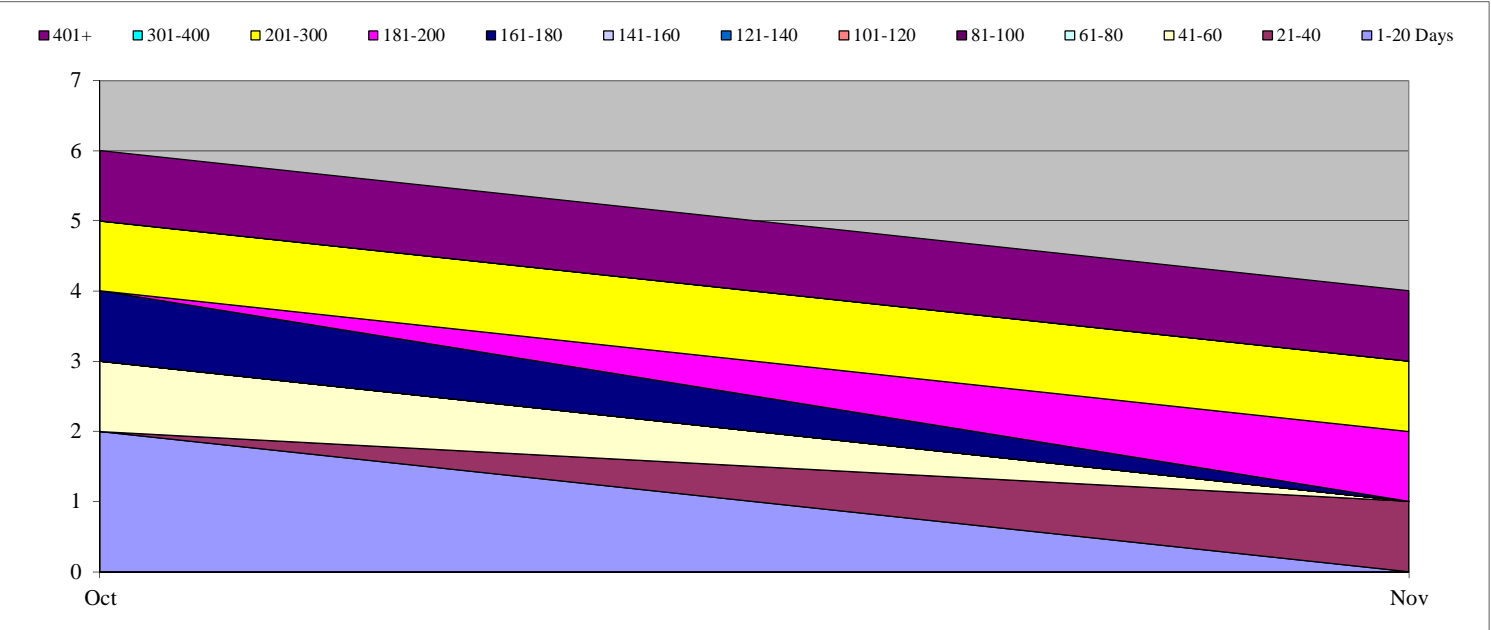
Appeals Monthly Production Rates

	Oct	Nov	Dec	Jan	Feb	Mar	Apr	May	June	Jul	Aug	Sep
Received	2	0										
Processed	9	2										



Days Pending for Open Cases

	Oct	Nov	Dec	Jan	Feb	Mar	Apr	May	June	Jul	Aug	Sep
1-20 Days	2	0										
21-40	0	1										
41-60	1	0										
61-80	0	0										
81-100	0	0										
101-120	0	0										
121-140	0	0										
141-160	0	0										
161-180	1	0										
181-200	0	1										
201-300	1	1										
301-400	0	0										
401+	1	1										
Total	6	4	0	0	0	0	0	0	0	0	0	0



U.S. Coast Guard (USCG)

Total Open:34

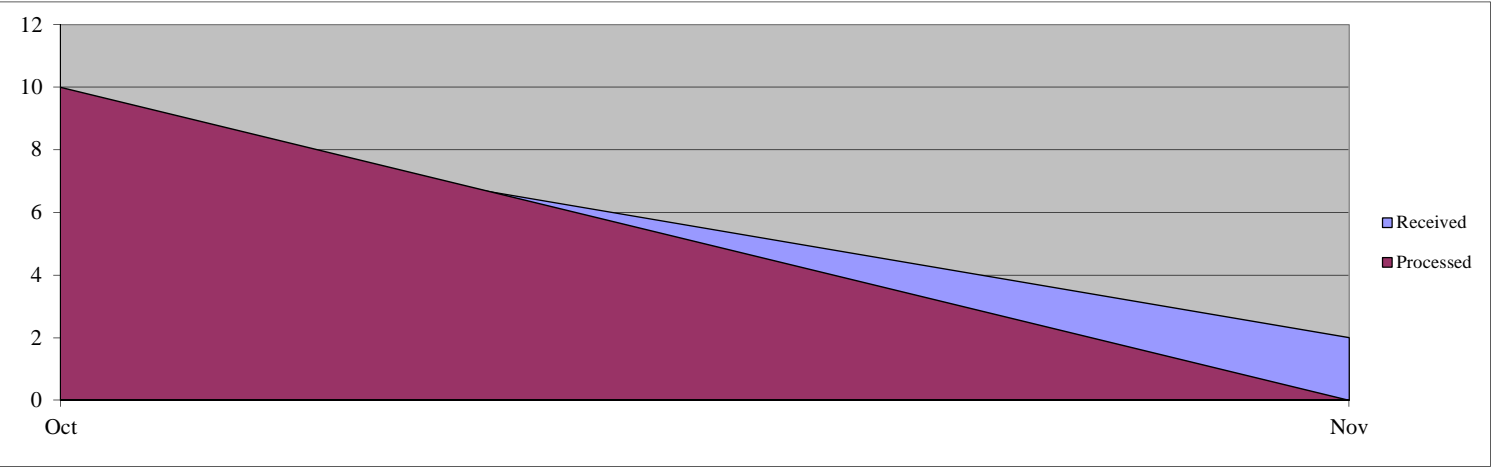
Total Received:11

Backlog:33

Total Processed:10

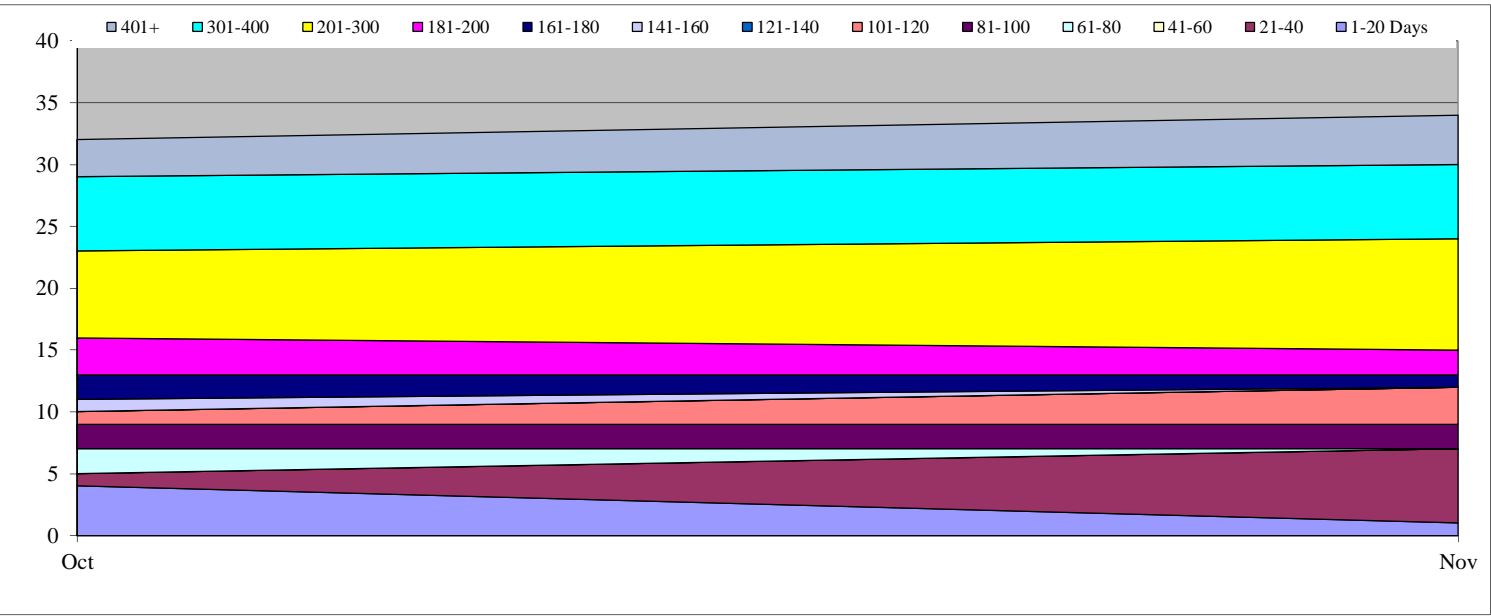
Appeals Monthly Production Rates

	Oct	Nov	Dec	Jan	Feb	Mar	Apr	May	June	Jul	Aug	Sep
Received	9	2										
Processed	10	0										



Days Pending for Open Cases

	Oct	Nov	Dec	Jan	Feb	Mar	Apr	May	June	Jul	Aug	Sep
1-20 Days	4	1										
21-40	1	6										
41-60	0	0										
61-80	2	0										
81-100	2	2										
101-120	1	3										
121-140	0	0										
141-160	1	0										
161-180	2	1										
181-200	3	2										
201-300	7	9										
301-400	6	6										
401+	3	4										
Total	32	34	0	0	0	0	0	0	0	0	0	0



United States Citizenship and Immigration Services (USCIS)

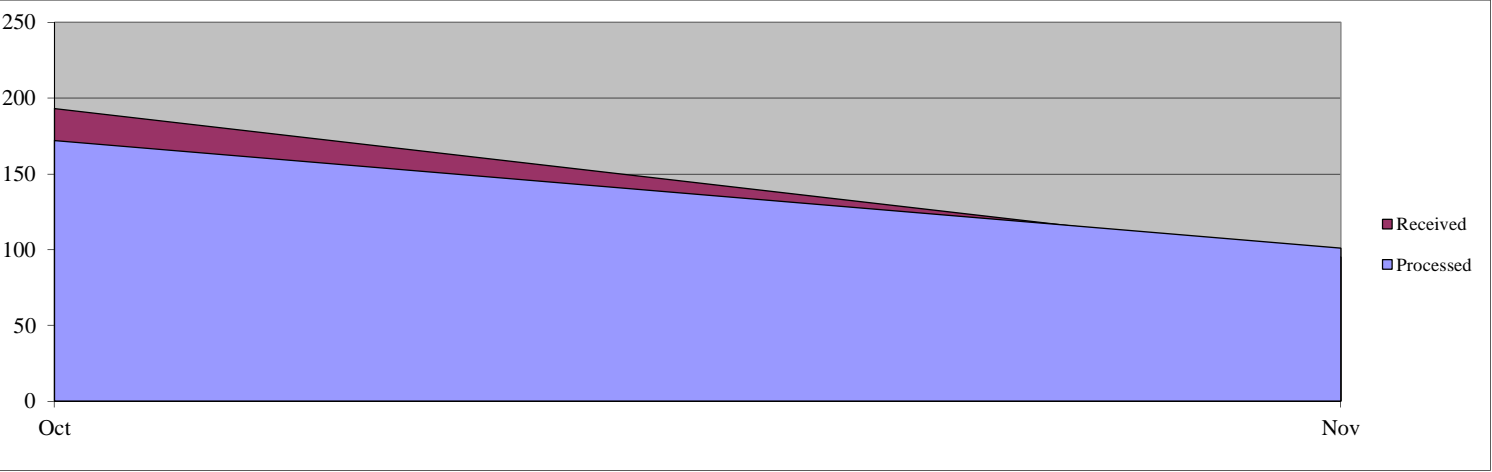
Total Open:85

Total Received:288
Total Processed:273

Backlog:35

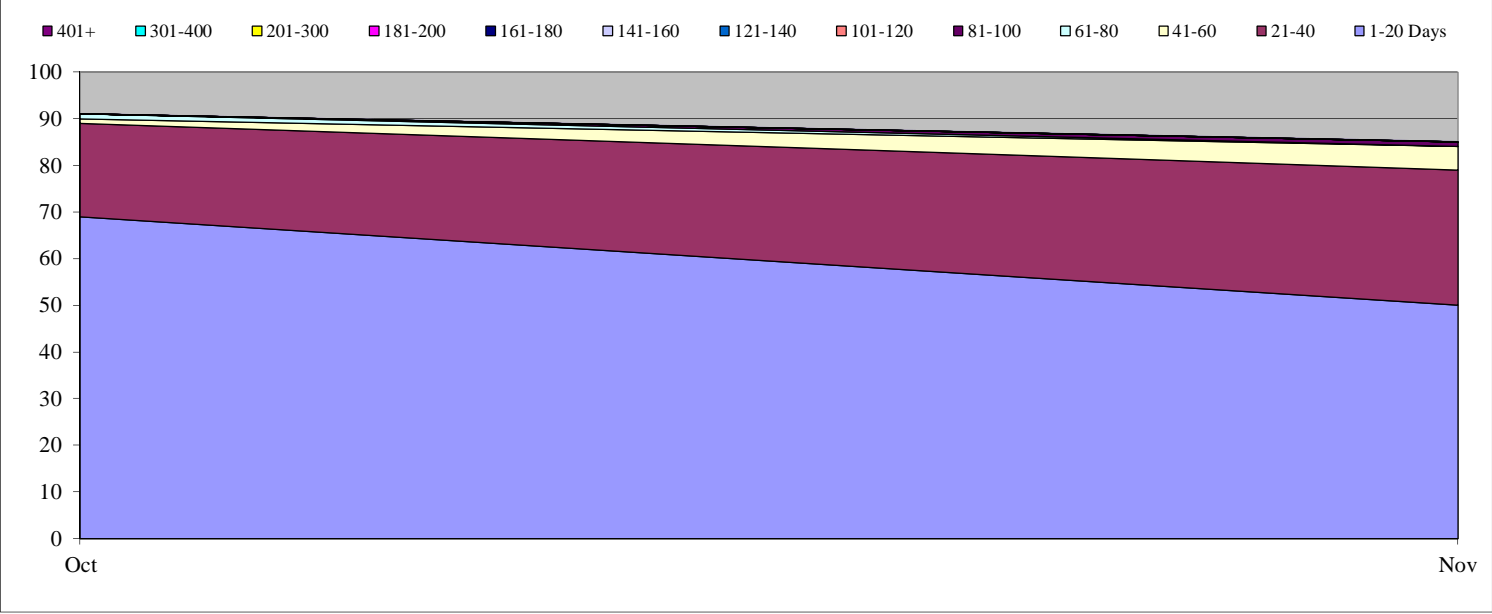
Appeals Monthly Production Rates

	Oct	Nov	Dec	Jan	Feb	Mar	Apr	May	June	Jul	Aug	Sep
Received	193	95										
Processed	172	101										



Days Pending for Open Cases

	Oct	Nov	Dec	Jan	Feb	Mar	Apr	May	June	Jul	Aug	Sep
1-20 Days	69	50										
21-40	20	29										
41-60	1	5										
61-80	1	0										
81-100	0	1										
101-120	0	0										
121-140	0	0										
141-160	0	0										
161-180	0	0										
181-200	0	0										
201-300	0	0										
301-400	0	0										
401+	0	0										
Total	91	85	0	0	0	0	0	0	0	0	0	0



United States Secret Service (USSS)

Total Open:4

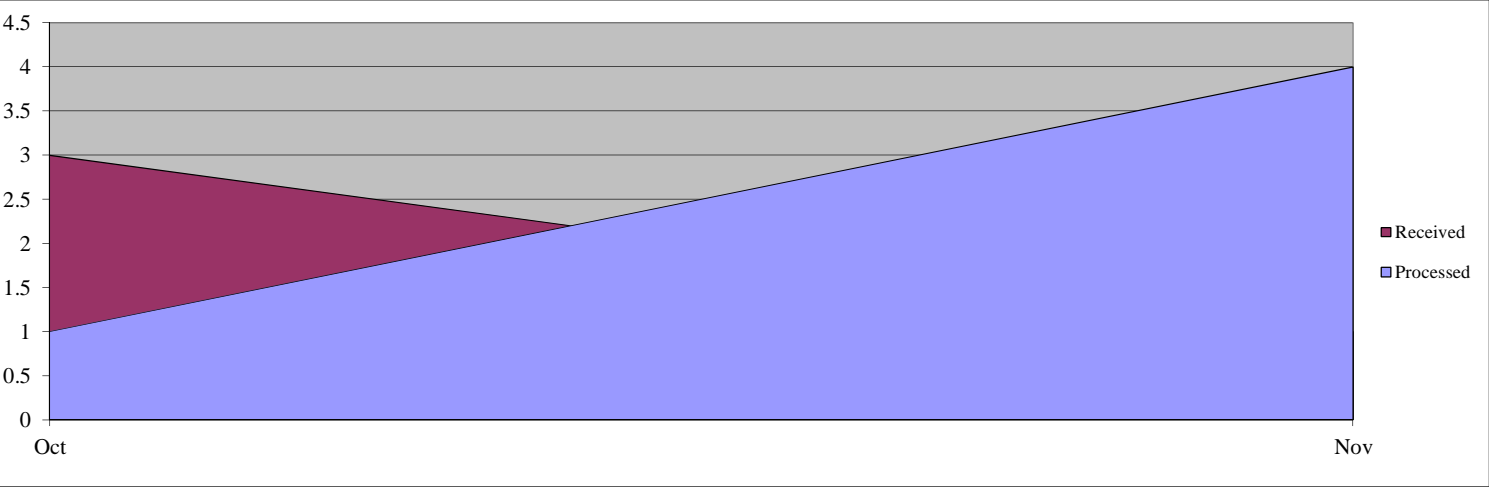
Total Received:4

Backlog:2

Total Processed:5

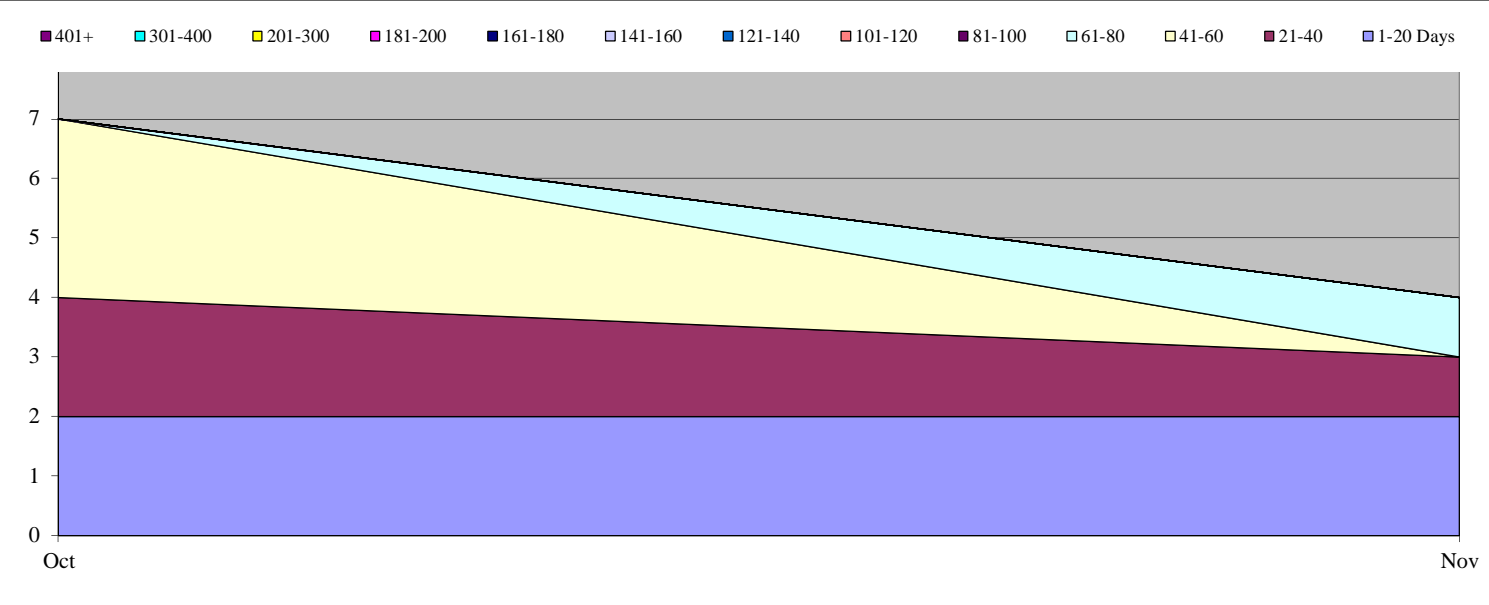
Appeals Monthly Production Rates

	Oct	Nov	Dec	Jan	Feb	Mar	Apr	May	June	Jul	Aug	Sep
Received	3	1										
Processed	1	4										



Days Pending for Open Cases

	Oct	Nov	Dec	Jan	Feb	Mar	Apr	May	June	Jul	Aug	Sep
1-20 Days	2	2										
21-40	2	1										
41-60	3	0										
61-80	0	1										
81-100	0	0										
101-120	0	0										
121-140	0	0										
141-160	0	0										
161-180	0	0										
181-200	0	0										
201-300	0	0										
301-400	0	0										
401+	0	0										
Total	7	4	0	0	0	0	0	0	0	0	0	0



Office of Inspector General (OIG)

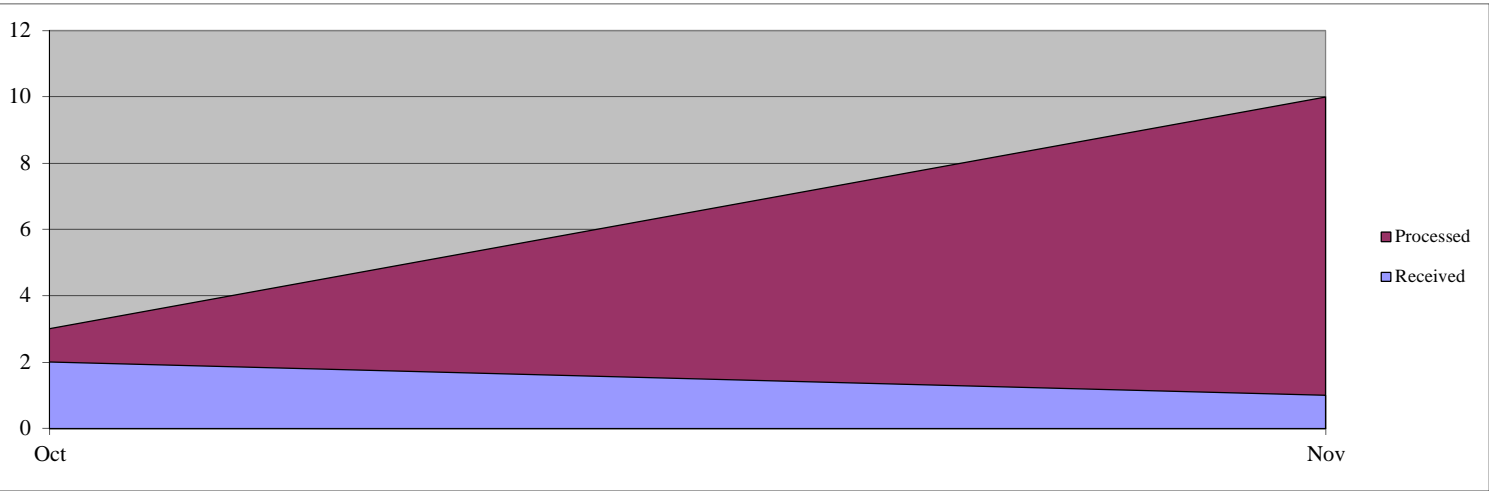
Total Open:9

Total Received:3
Total Processed:13

Backlog:9

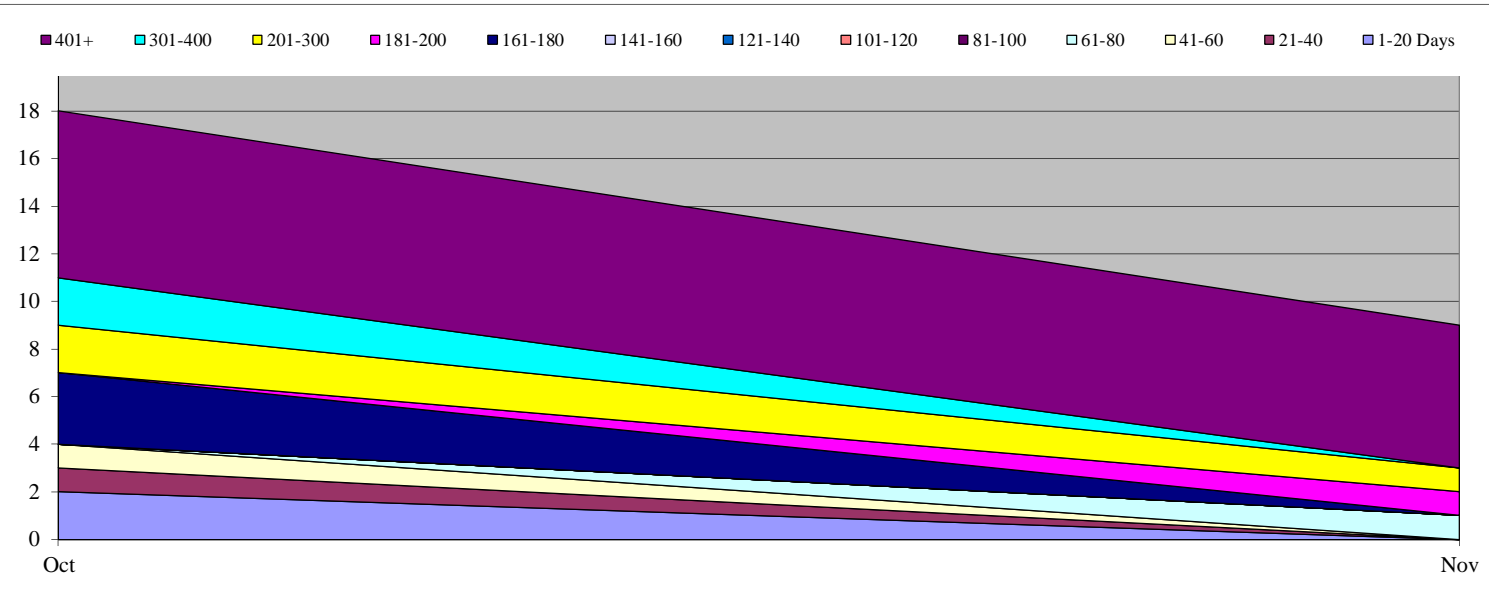
Appeals Monthly Production Rates

	Oct	Nov	Dec	Jan	Feb	Mar	Apr	May	June	Jul	Aug	Sep
Received	2	1										
Processed	3	10										



Days Pending for Open Cases

	Oct	Nov	Dec	Jan	Feb	Mar	Apr	May	June	Jul	Aug	Sep
1-20 Days	2	0										
21-40	1	0										
41-60	1	0										
61-80	0	1										
81-100	0	0										
101-120	0	0										
121-140	0	0										
141-160	0	0										
161-180	3	0										
181-200	0	1										
201-300	2	1										
301-400	2	0										
401+	7	6										
Total	18	9	0	0	0	0	0	0	0	0	0	0



Federal Emergency Management Agency (FEMA)

Total Open:32

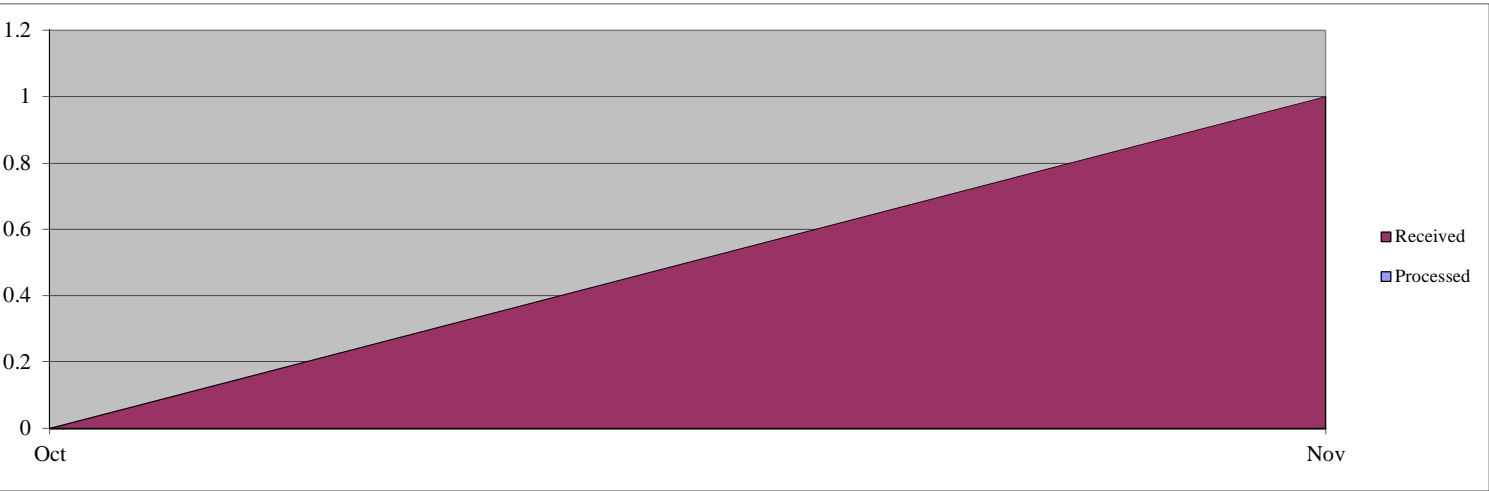
Total Received:1

Backlog:31

Total Processed:0

Appeals Monthly Production Rates

	Oct	Nov	Dec	Jan	Feb	Mar	Apr	May	June	Jul	Aug	Sep
Received	0	1										
Processed	0	0										



Days Pending for Open Cases

	Oct	Nov	Dec	Jan	Feb	Mar	Apr	May	June	Jul	Aug	Sep
1-20 Days	0	1										
21-40	0	0										
41-60	1	0										
61-80	1	1										
81-100	2	1										
101-120	1	2										
121-140	1	1										
141-160	0	1										
161-180	0	0										
181-200	1	0										
201-300	3	4										
301-400	1	1										
401+	20	20										
Total	31	32	0	0	0	0	0	0	0	0	0	0

