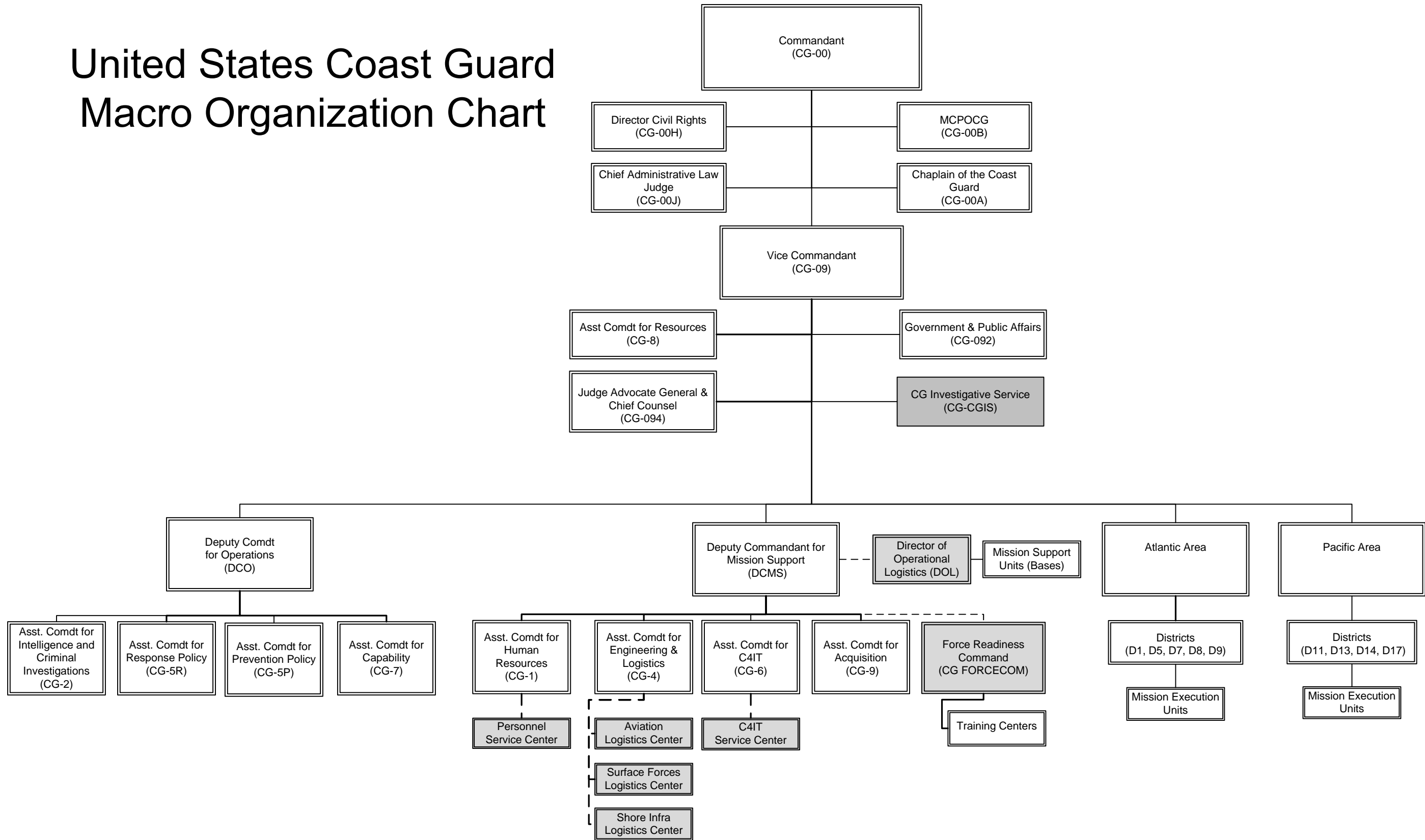


United States Coast Guard Macro Organization Chart



Gray shaded organizations are CG Headquarters Units. The reporting relationship (Technical Control) is described within their respective functional statements and is reflected here via dashed lines.

Approved: CCG 2008
 Modified: FC to DCMS: VCG 11 Nov 2010
 Modified: CG-2 to DCO: CG-81 13 Aug 2014
 Modified: CGIS to VCG: VCG 6 Oct 2014
 Deleted: CG-095 Approved 22 Oct 2015